

FAQS

What is Mixed Rigid Plastic?

Mixed rigid plastic or MRP is an industry term that defines a category of recyclable plastic. It includes hard or rigid plastic items, as opposed to film plastic (plastic bags, pallet shrink wrap, plastic hoses and other flexible plastic items). See the list of acceptable MRP on the inside of this flyer.

What is the raw material used to make plastics?

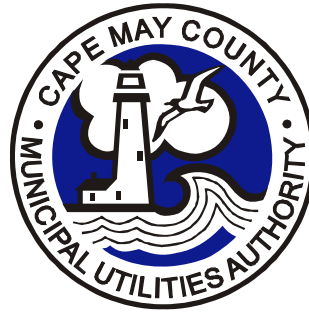
Crude oil. Polyethylene, the lightest fraction of refined oil, is the raw material used to make the many and varied plastic resins we use every day.

What does plastic resin mean?

Plastic resins are particular types of plastics with well defined characteristics and specific chemical compositions. Examples are high density polyethylene (HDPE), poly vinyl chloride (PVC) and polystyrene (PS).

How are MRPs recycled?

When the CMCMUA accumulates a truckload of MRP, the plastics are baled and shipped to recycling facilities that sort plastic resins, remove metal, shred, wash and sometimes pelletize the plastic. The recycling facilities sell large boxes of tiny flakes or pellets as secondary raw material to manufacturers. New products such as: plastic buckets, lumber, barrels and furniture are fabricated using recycled plastic rather than virgin plastic derived from crude oil.

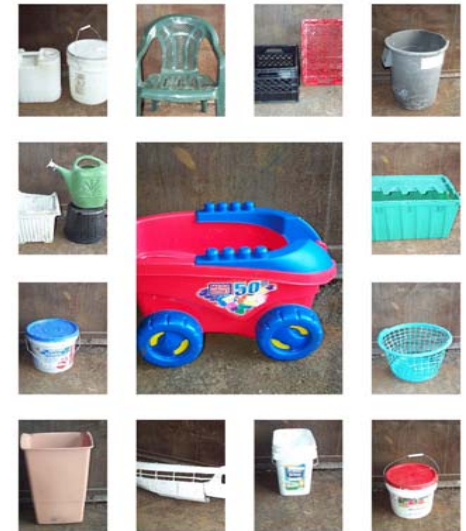


SANITARY LANDFILL, IPF RECYCLING FACILITY & CLASS B RECYCLING FACILITY	WINTER SCHEDULE	SUMMER SCHEDULE
	1/1/2011 – 5/29/2011 AND 9/12/2011 – 12/31/2011	5/30/2011 – 9/11/2011
Monday through Friday	7:30 AM – 4:00 PM	7:00 AM – 4:00 PM
Saturdays	8:00 AM – 12 NOON	7:00 AM – 12 NOON
Sundays	CLOSED	CLOSED
TRANSFER STATION		
Monday through Friday	7:30 AM – 2:30 PM	7:30 AM – 3:30 PM
Saturdays	8:00 AM – 11:30 AM	7:30 AM – 11:30 AM**
Sundays	CLOSED	CLOSED
** Operating Hours extended to 12 Noon during the months of July and August and on May 28 and September 3, 2011.		

**Cape May County
Municipal Utilities Authority
P.O. Box 610
Cape May Court House, NJ 08210
Phone (609) 465-9026**

Rigid Plastics Recycling Program

Cape May County Municipal Utilities Authority



EFFECTIVE 2011



Printed on Recycled Paper

RECYCLING PROGRAM FOR MIXED RIGID PLASTICS - MRPs

1) WHO: All Cape May County (County) residents, schools, businesses, municipalities, public and private agencies.

2) WHAT: **Mixed Rigid Plastics (MRPs)** are hard or rigid plastic items, not film or flexible plastic – See “Acceptable MRPs” list.

3) WHERE: CMCMUA Transfer Station in Burleigh and Landfill Complex in Woodbine.

4) WHEN: During normal operating hours. See back of flyer.

5) HOW: All customers can bring MRPs to the Transfer Station and Landfill **free of charge**. Some municipalities may offer a collection service or municipal drop-off location.

6) WHY: MRP recycling allows old plastic to be substituted for virgin plastic in the manufacture of new plastic products which:

- saves crude oil, the raw material used to make plastic,
- saves energy, since less fuel is used during the manufacturing process; and
- saves space in the County’s Landfill, extending landfill life.

ACCEPTABLE MRPs

Plastic buckets with or without metal handles (empty)
Plastic milk/soda crates
Plastic laundry baskets
Plastic lawn furniture
Plastic landscape & microwave trays
Plastic totes – any size (with metal)
Plastic drums (any size)
Plastic toys & playhouses
Plastic children’s electronics
Plastic pet carriers
Plastic pallets
Plastic coolers
Plastic shelving
Plastic closet organizers
Plastic dish drainers
Plastic flower pots (no soil)
Plastic traffic signs
Empty garbage cans (any size)
CD’s & DVD’s (and cases)
VHS Tapes
Blister pack
5 gallon water bottles
Computer housing (no circuits)
Automotive plastics:
 Bumpers
 Bed liners (pick up trucks)
 Grills
 Side-view mirrors
 Headlights & rear lights
 Hubcaps

**All Plastic Should Be Clean
And Free Of Debris.**

NON-ACCEPTABLE MATERIALS

Plastic Film (grocery bags & stretch film)
Glass, metal, wood, paper, clothes
Styrofoam
Poly-coated paper (orange juice and milk cartons)
Flexible water hoses
Hazardous material
Medical waste
Narrow-neck liquid containers
Used small mouth containers
Small plastic containers (yogurt cups, PET/HDPE bottles, etc.)
Oil/chemical containers
PVC Pipe
Vinyl Siding

ARE MRPs COLLETED WITH OTHER RECYCLABLES?

No. MRPs cannot be mixed with cans and bottles. Do not place MRPs with your curbside set-out of cans/bottles and paper.

This is a voluntary program. Some municipalities may offer a separate curbside collection service or a municipal drop-off location for MRPs. For information, call your municipal recycling coordinator at town hall or the department of public works.