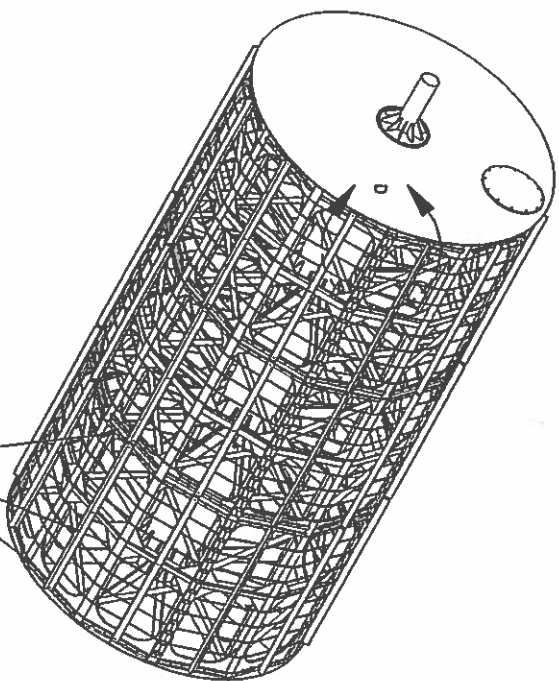
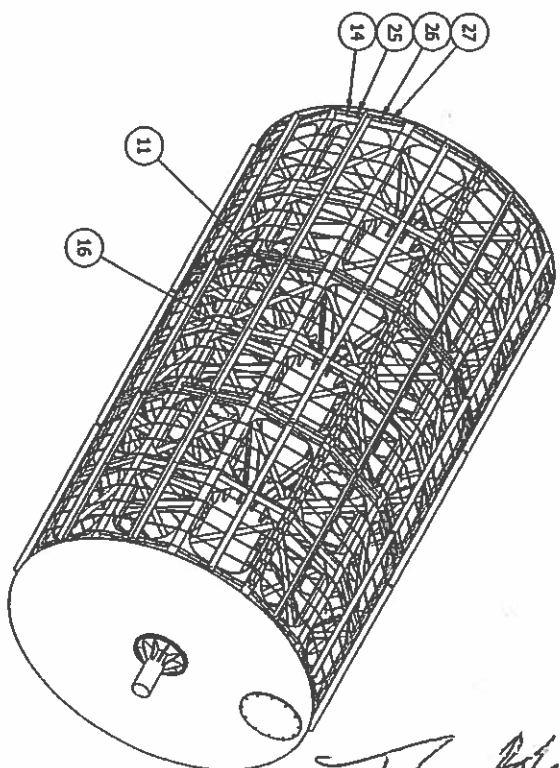
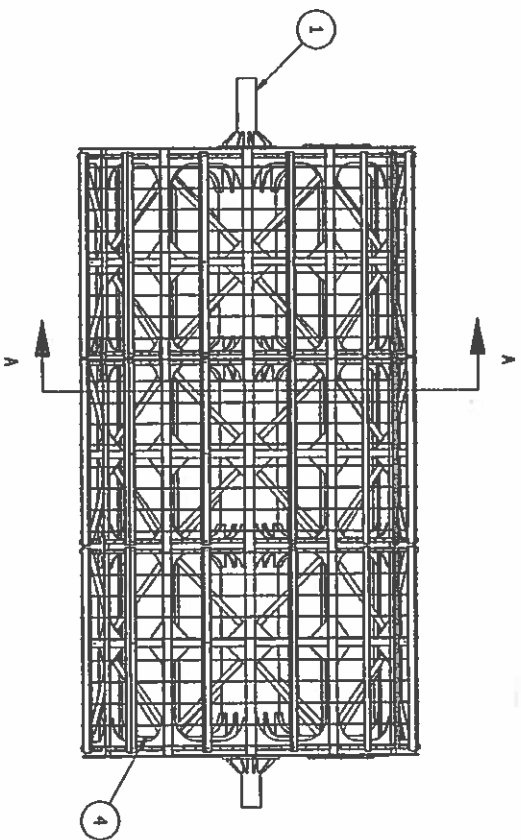
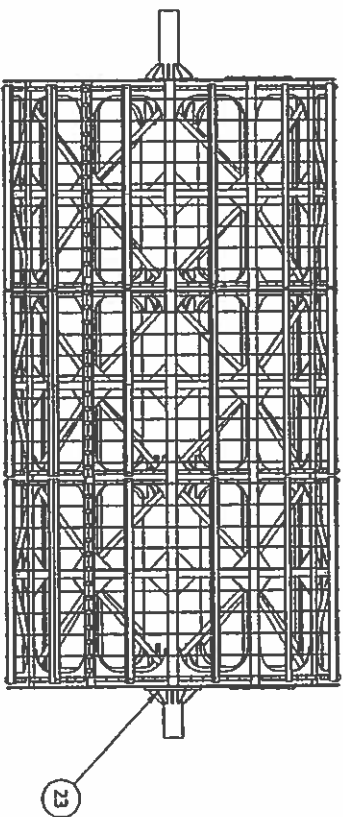
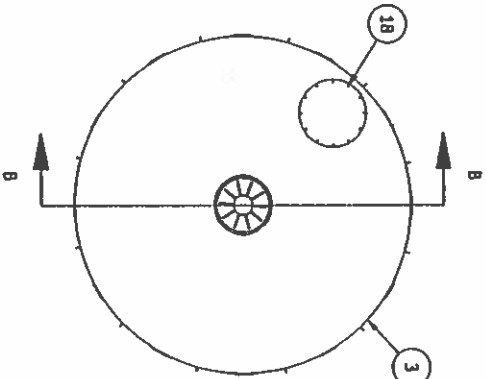


- NOTES:**
1. REMOVE ALL BURRS AND SHARP EDGES; ROUND ALL CORNERS.
 2. REMOVE ALL WELD SPATTER, SLAG AND DISCORDRATION.
 3. MATERIAL: AS PER BOM
 4. MESH NOT SHOWN FOR CLARITY

All welds will be per latest American Welding Society standards.
 All fillet welds per drawing.
 All CS painted to spec 540126 up to bearing.
 General construction is 3/4" Thick; Bulkheads are 1/2".



MESH WILL BE HELD BY ANGLES FASTENED OVER THE MESH TO THE STRUCTURAL DRUM AND INTERLOCKED WITH A FLAT BAR ACROSS. (MESH NOT SHOWN FOR CLARITY)



Tom B...
3/12/09

| ITEM | QTY | PART NUMBER | DESCRIPTION | MATERIAL |
|------|-----|---------------------|---------------------------------|-------------------|
| 25 | 474 | 3/8 WASHER | WASHER | 304SS |
| 26 | 474 | 3/8-16 HEX NUT | NUT | 304SS |
| 27 | 474 | 3/8-16 x 1 1/2 BOLT | BOLT HEX HEAD | 304SS |
| 24 | 24 | 140280032 | SPOKE | A36 |
| 23 | 24 | 140280031 | GUSSET, STUBSHAFT | A36 |
| 22 | 33 | 140280030 | CABLE, 19 STRANDS & TURNBUCKLES | 304SS |
| 21 | 56 | 140280029 | MESH CLOSING BRACKET | 304SS |
| 20 | 2 | 140280028 | 1 x 1/8 x 86 FLAT BAR | 304SS |
| 19 | 1 | 140280027 | 1 3/4 x 1 3/4 CHAIN FENCE, 904 | 304SS |
| 18 | 2 | 140280019 | COVER | A36 |
| 16 | 12 | 140280017 | MESHFASTENER2CENTER | 304SS |
| 15 | 24 | 140280016 | MESHFASTENER3 | 304SS |
| 14 | 72 | 140280015 | MESHFASTENER1 | 304SS |
| 13 | 24 | 140280013 | INSIDE SPOKE CENTER STIFFENER | A36 |
| 11 | 72 | 140280012 | EXTERNAL TUBE | A36 |
| 10 | 24 | 140280011 | GUSSET | A36 |
| 9 | 24 | 140280010 | INSIDE SPOKE CENTER | A36 |
| 8 | 144 | 140280009 | TR1 BRACKETS | A36 |
| 7 | 24 | 140280008 | SPOKE CENTER | A36 |
| 6 | 36 | 140280007 | 3X3X1/4 OUT BEAM | A36 |
| 5 | 24 | 140280006 | SPOKE CENTER_OUT_LAT | A36 |
| 4 | 12 | 140280005 | W 6X12 I-BEAM 23'-6"LG | A36 |
| 3 | 2 | 140280004 | BULKHEAD | A36 |
| 1 | 1 | 140280002 | SHAFT ASSY_ASM | SEE DRW 140280002 |

PRELIMINARY APPROVAL

INFORMATION CERTIFIED

THIS DRAWING IS LIMITED TO FUNCTIONAL DESIGN, GENERAL MAINTENANCE AND CLEARANCE. NO RESPONSIBILITY IS ACCEPTED BY PARKSON CORPORATION FOR OTHER DIMENSIONS, QUANTITIES, OR COORDINATION WITH OTHER EQUIPMENT OR DRAWINGS EXCEPT AS STATED IN PURCHASE ORDER.

The drawing and all appurtenant matter contains information proprietary to PARKSON CORPORATION and is loaned subject to return upon demand and must not be reproduced, copied, loaned, resold, nor used for any purpose other than that for which it is specifically furnished without express written consent of PARKSON CORPORATION. The Owner, Project Engineer, and all others involved with the project design must recognize and follow all safety practices required by local, state and federal laws when incorporating Parkson Corporation equipment into the overall project design. Parkson Corporation will not be responsible for burden and/or placement of equipment in the plant design, nor is Parkson Corporation responsible for plant safety design and for the failure to follow appropriate safety practices in the operation and maintenance of Parkson Corporation equipment.

| REV. | DESCRIPTION | DATE | BY |
|------|-------------|------|----|
| | | | |
| | | | |

| DRAWN BY | DATE |
|----------|-----------|
| A.R. | 5/21/2008 |

| CHECKED BY | DATE |
|------------|-----------|
| ADDIE R | 5/28/2008 |

| SCALE | SIZE |
|-------|------|
| B | B |

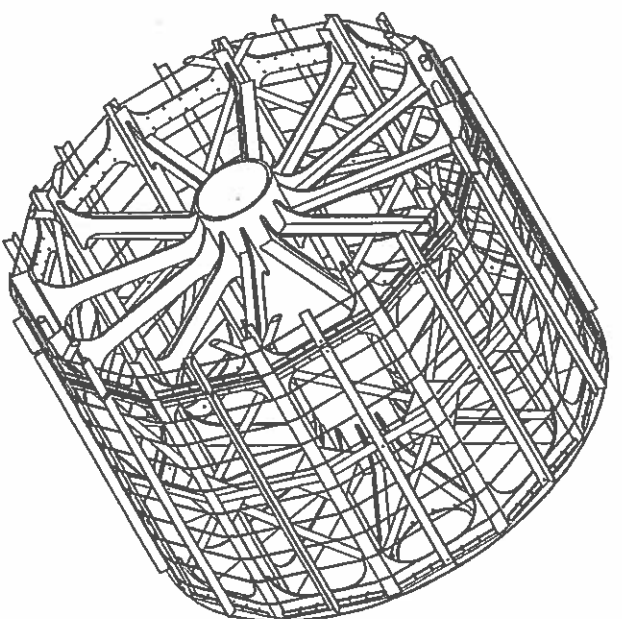


| PROJECT NAME | TITLE |
|--------------|---|
| CAPE MAY | Geo Reactor GR140228 GENERAL ARRANGEMENT |

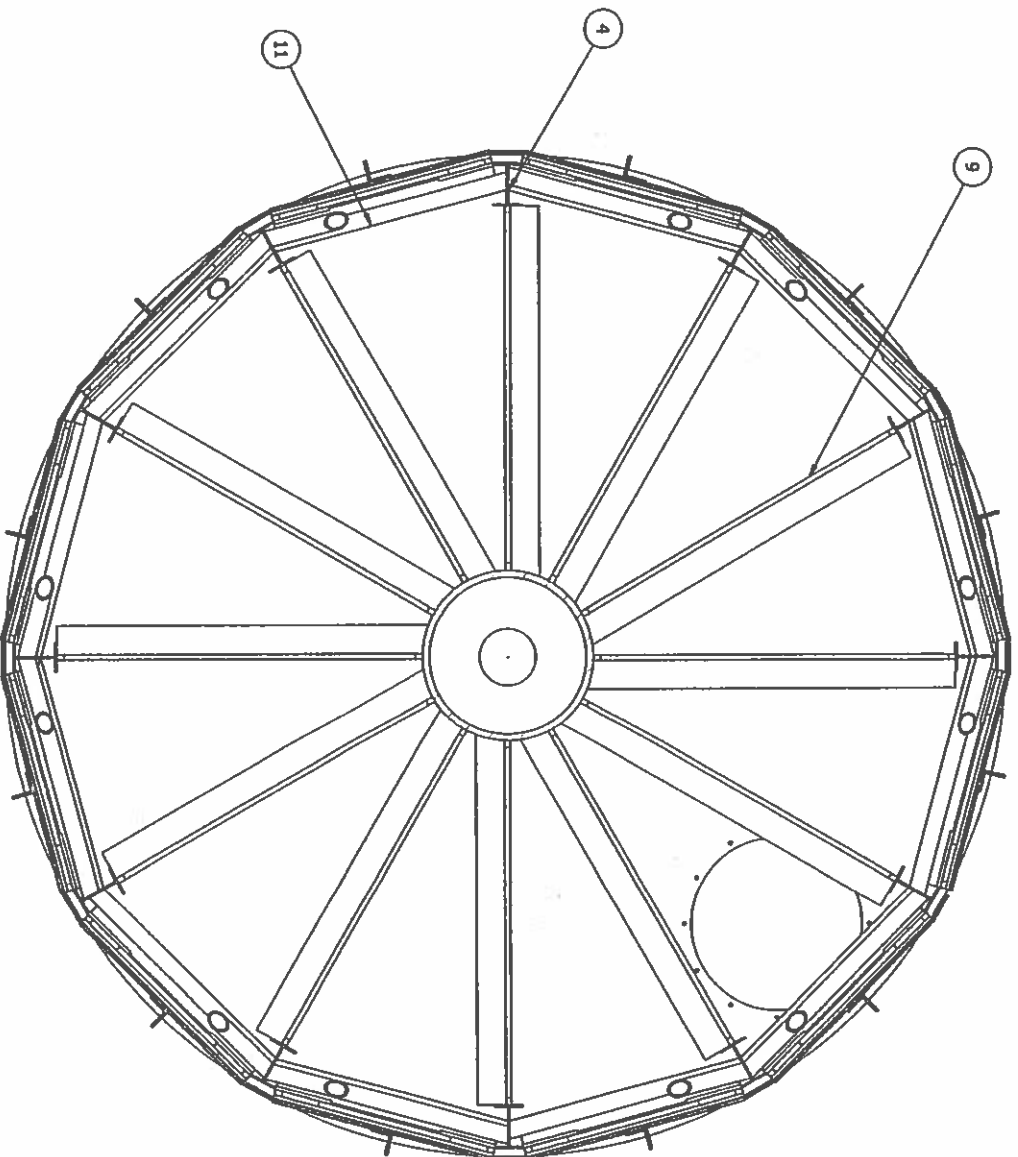
| REFERENCE INFORMATION | DRAWING NO. |
|-----------------------|-------------|
| | GR140280001 |

| SHEET | OF |
|-------|----|
| 1 | 5 |

| REV | |
|-----|--|
| 2 | |



ISOMETRIC VIEW
OF SECTION A-A



SECTION A-A
SCALE 1/25

T. M. B. [Signature]
3/12/09

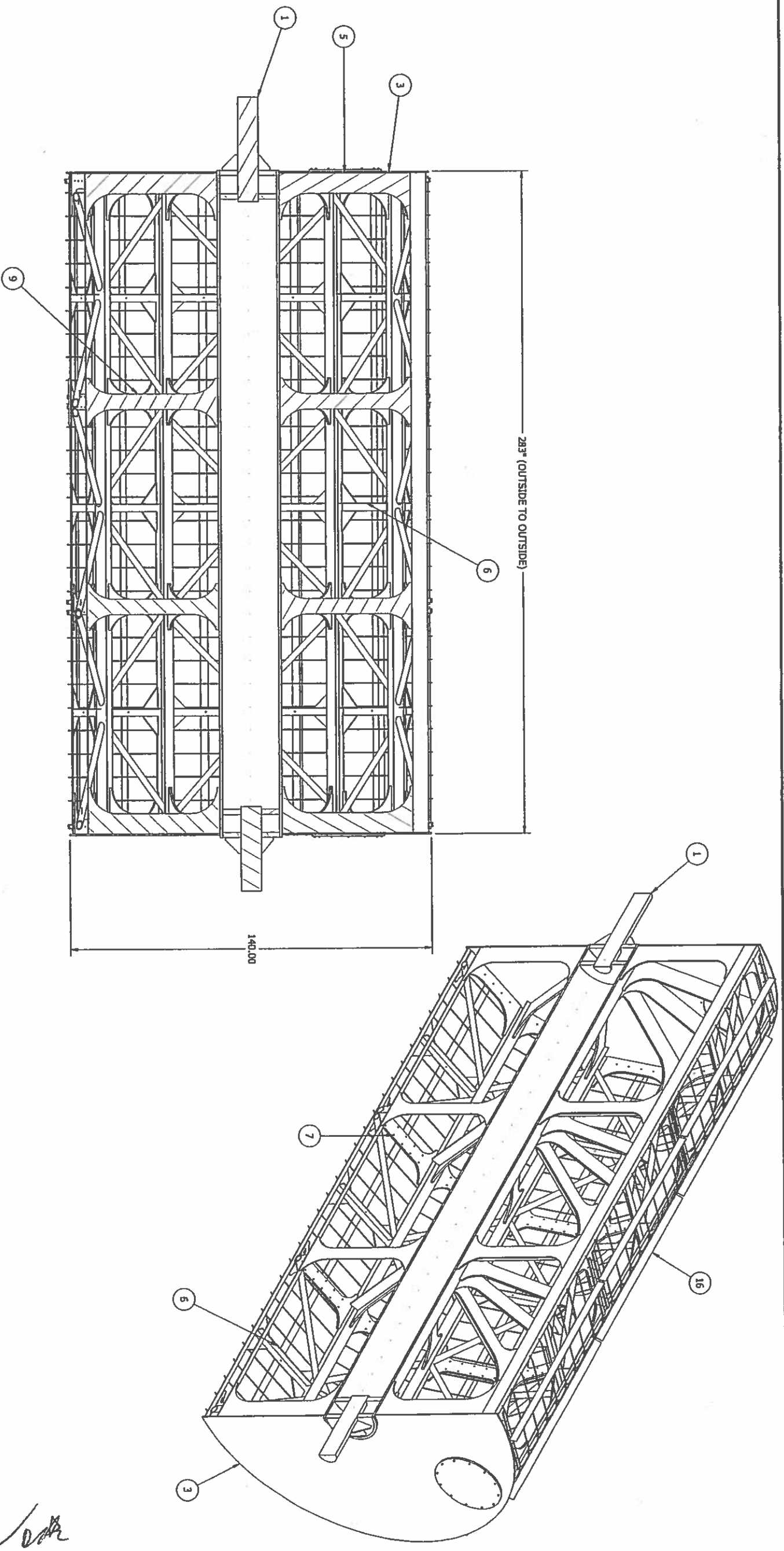
This drawing and all equipment matter contains information proprietary to PARKSON CORPORATION and is being subject to return upon demand and must not be reproduced, copied, loaned, revealed, nor used for any purpose other than that for which it is specifically furnished without expressed written consent of PARKSON CORPORATION. The Owner, Project Engineer, and all others involved with the project design must implement and follow all safety standards required by local, state and federal laws when incorporating Parkson Corporation equipment into the overall project design. Parkson Corporation will not be responsible for location and/or placement of equipment in the field design, nor is Parkson Corporation responsible for field safety design and for the failure to follow appropriate safety procedures in the operation and maintenance of Parkson Corporation equipment.

| REV. | DESCRIPTION | DATE | BY |
|------|-------------|------|----|
| | | | |
| | | | |
| | | | |
| | | | |

| | |
|--|---------------------------------------|
| PRELIMINARY _____ APPROVAL _____ INFORMATION _____ CERTIFIED _____ THIS DRAWING IS LIMITED TO FUNCTIONAL DESIGN, GENERAL ARRANGEMENT AND CLEARANCE. NO RESPONSIBILITY IS ACCEPTED BY PARKSON CORPORATION FOR OTHER DIMENSIONS, QUANTITIES, OR COORDINATION WITH OTHER EQUIPMENT OR DRAWINGS EXCEPT AS STATED IN PURCHASE ORDER. | DRAWN BY A.R. 5/21/2008 DATE |
| DECDED BY Addis R. SCALE B | DATE 5/28/2008 SIZE B |



| | |
|-----------------------|-------------|
| PROJECT NAME | TITLE |
| REFERENCE INFORMATION | SECTION A-A |
| DRAWING NO. | GR140280001 |
| SHEET 2 OF 5 | REV 2 |



SECTION B-B
SCALE 1/40

This drawing and all equipment matter contains information proprietary to PARKSON CORPORATION and is hereby subject to return upon demand and must not be reproduced, copied, loaned, rented, or used for any purpose other than that for which it is specifically furnished without express consent of PARKSON CORPORATION. The Owner, Project Engineer, and all others involved with the project design must implement and follow all safety concerns required by local, state and federal laws when incorporating Parkson Corporation equipment into the overall project design. Parkson Corporation will not be responsible for human and/or placement of equipment in the plant design, nor is Parkson Corporation responsible for plant safety design and for the failure to follow appropriate safety procedures in the operation and maintenance of Parkson Corporation equipment.

| REV. | DESCRIPTION | DATE | BY |
|------|-------------|------|----|
| | | | |
| | | | |
| | | | |

PRELIMINARY APPROVAL
 INFORMATION CERTIFIED

THIS DRAWING IS LIMITED TO FUNCTIONAL DESIGN, GENERAL ALIGNMENT AND CLEARANCE. NO RESPONSIBILITY IS ACCEPTED BY PARKSON CORPORATION FOR OTHER DIMENSIONS, QUANTITIES, OR COORDINATION WITH OTHER EQUIPMENT OR DRAWINGS EXCEPT AS STATED IN PURCHASE ORDER.

| | |
|------------|-----------|
| DRAWN BY | DATE |
| A.R. | 5/21/2008 |
| CHECKED BY | DATE |
| Adolfo R. | 5/28/2008 |
| SCALE | SIZE |
| | B |



PROJECT NAME

REFERENCE INFORMATION

TITLE

SECTION B-B

DRAWING NO.

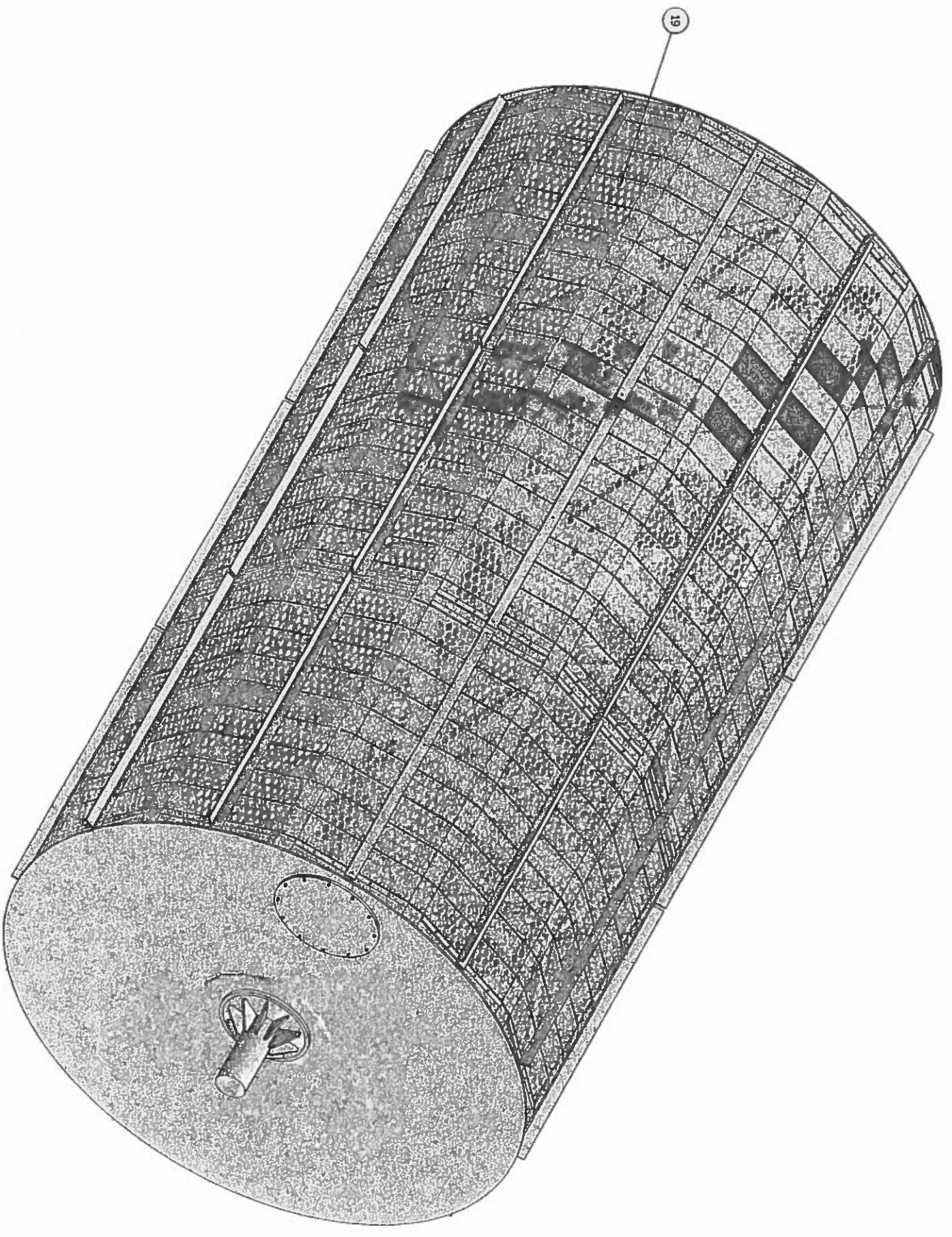
GR140280001

SHEET 3 OF 3

REV

2

T. Don Bl.../...
3/12/09



T. C. B. W. JR
3/12/09

The drawing and all pertinent notes contain information proprietary to PARKSON CORPORATION and is based subject to claim upon demand and must not be reproduced, copied, loaned, provided, nor used for any purpose other than that for which it is specifically furnished without express written consent of PARKSON CORPORATION. The Owner, Project Engineer, and all others involved with the project design must implement and follow all safety standards required by local, state and federal laws when incorporating Parkson Corporation equipment into the overall project design. Parkson Corporation will not be responsible for location and/or placement of equipment in the plant design, nor is Parkson Corporation responsible for plant safety design and for the failure to follow appropriate safety procedures in the operation and maintenance of Parkson Corporation equipment.

| REV. | DESCRIPTION | DATE | BY |
|------|-------------|------|----|
| | | | |
| | | | |
| | | | |
| | | | |

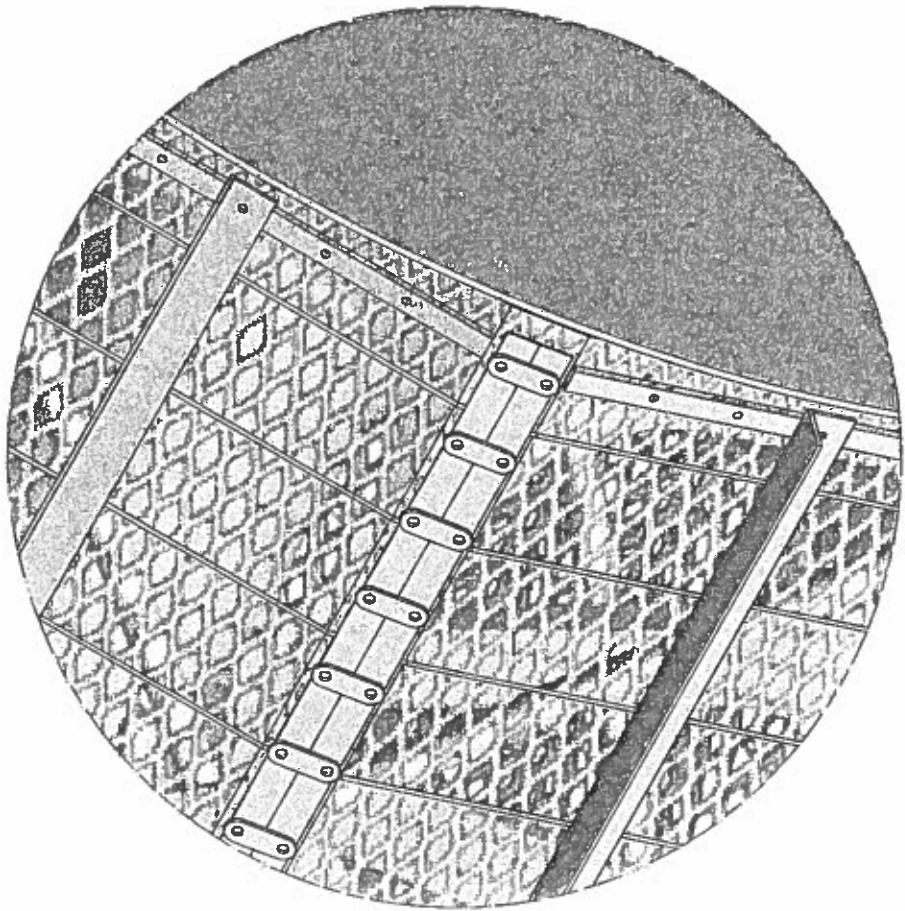
PRELIMINARY
 APPROVAL
 INFORMATION
 CERTIFIED

THIS DRAWING IS LIMITED TO FUNCTIONAL DESIGN, GENERAL ARRANGEMENT AND CLEARANCE. NO RESPONSIBILITY IS ACCEPTED BY PARKSON CORPORATION FOR OTHER DIMENSIONS, QUANTITIES, OR COORDINATION WITH OTHER EQUIPMENT OR DRAWINGS EXCEPT AS STATED IN PURCHASE ORDER.

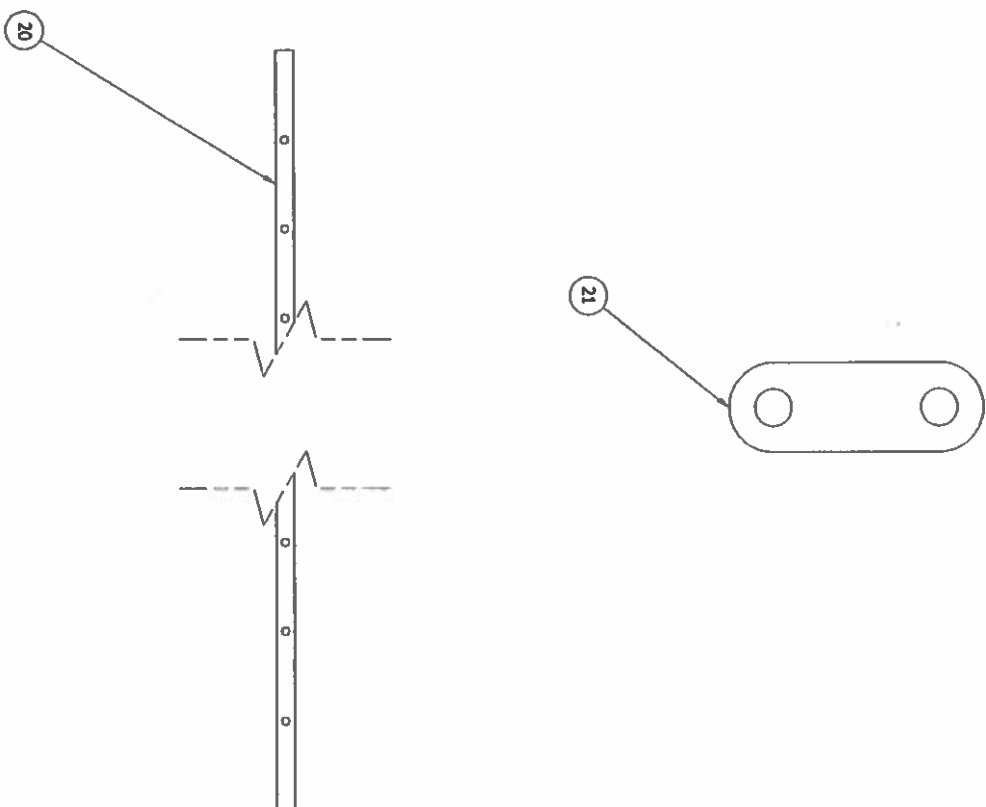
| | |
|------------|-----------|
| DRAWN BY | DATE |
| A.R. | 5/21/2008 |
| CHECKED BY | DATE |
| ADDIO R. | 5/29/2008 |
| SCALE | SIZE |
| | B |



| | |
|-----------------------|----------------------|
| PROJECT NAME | TITLE |
| CAPE MAY | Geo Reactor GR140X28 |
| REFERENCE INFORMATION | ISOMETRIC VIEW |
| DRAWING NO. | REV. |
| GR140280001 | 2 |
| SHEET 4 OF 5 | |



DETAIL D
SCALE 1/10



J. M. [Signature]
3/12/09

This drawing and all specifications and/or contents herein are the property of PARKSON CORPORATION and is loaned subject to return upon demand and must not be reproduced, copied, altered, revised, nor used for any purpose other than that for which it is specifically furnished without expressed written consent of PARKSON CORPORATION. The Owner, Project Engineer, and all others involved with the project design must implement and follow all safety standards required by local, state and federal laws when incorporating Parkson Corporation equipment into the overall project design. Parkson Corporation will not be responsible for location and/or placement of equipment in the plant design, nor is Parkson Corporation responsible for plant safety design and for the failure to follow appropriate safety procedures in the operation and maintenance of Parkson Corporation equipment.

| REV. | DESCRIPTION | DATE | BY |
|------|-------------|------|----|
| | | | |
| | | | |
| | | | |

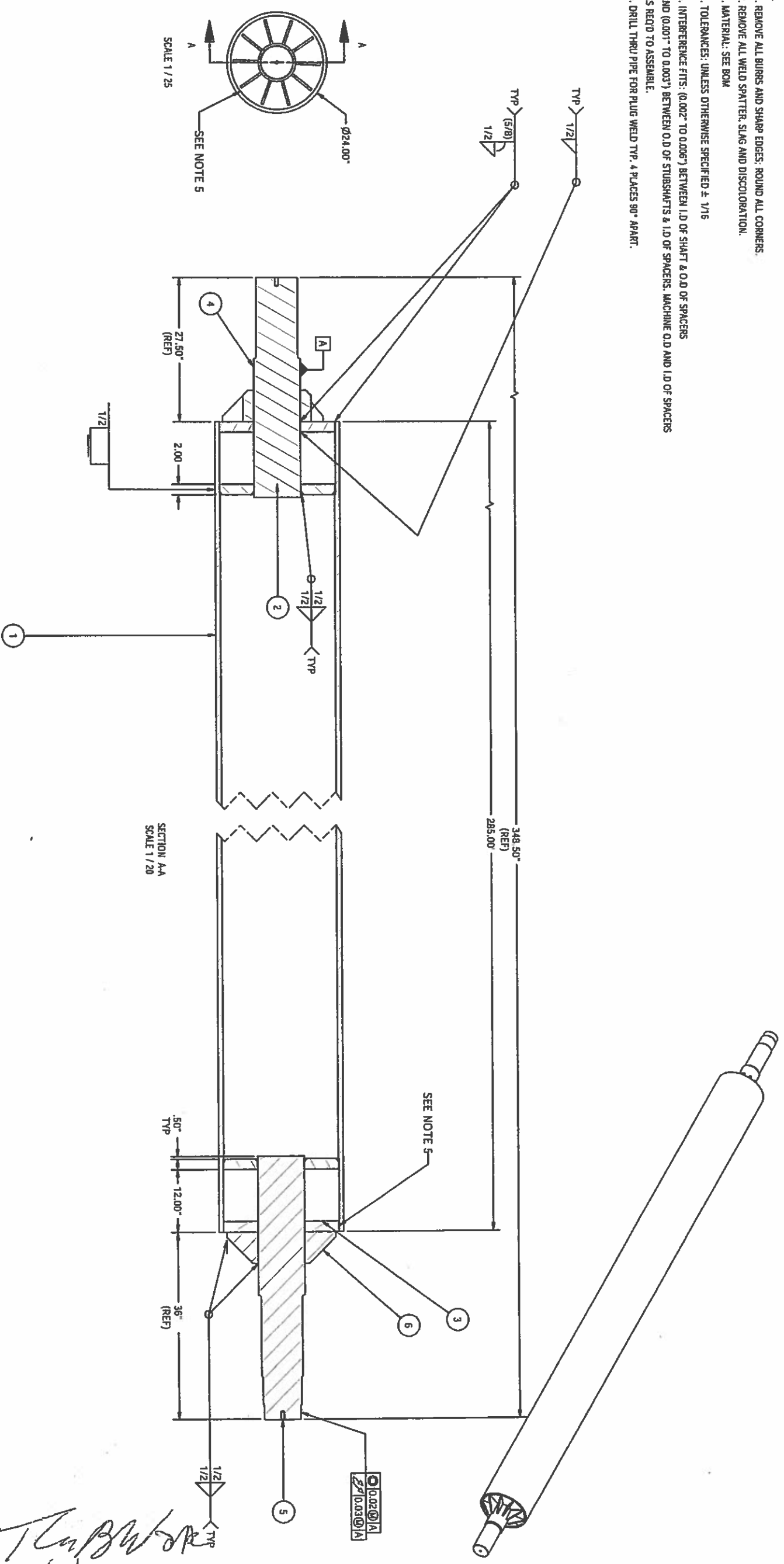
| | | |
|--|-------------------------|-------------------|
| PRELIMINARY <input checked="" type="checkbox"/> APPROVAL INFORMATION <input type="checkbox"/> CERTIFIED | DRAWN BY A.R. | DATE 5/21/2008 |
| THIS DRAWING IS LIMITED TO FACTORY, DESIGN, GENERAL MANAGEMENT AND CLEARANCE. NO RESPONSIBILITY IS ACCEPTED BY PARKSON CORPORATION FOR OTHER DIMENSIONS, QUANTITIES, OR COORDINATION WITH OTHER EQUIPMENT OR DRAWINGS EXCEPT AS STATED IN PURCHASE ORDER. | CHECKED BY Addido R. | DATE 5/28/2008 |
| | SCALE 8 | SIZE 8 |



| | |
|--------------------------|---|
| PROJECT NAME CAPE MAY | TITLE Geo Reactor GR140x28 DETAIL D |
| REFERENCE INFORMATION | DRAWING NO. GR140280001 |
| | SHEET 5 OF 5 |
| | REV 2 |

NOTES:

1. REMOVE ALL BURRS AND SHARP EDGES; ROUND ALL CORNERS.
2. REMOVE ALL WELD SPATTER, SLAG AND DISCOLORATION.
3. MATERIAL: SEE BOM
4. TOLERANCES: UNLESS OTHERWISE SPECIFIED ± 1/16
5. INTERFERENCE FITS: (0.002" TO 0.006") BETWEEN I.D OF SHAFT & O.D OF SPACERS AND (0.001" TO 0.003") BETWEEN O.D OF SHAFTS & I.D OF SPACERS. MACHINE O.D AND I.D OF SPACERS AS REQ'D TO ASSEMBLE.
6. DRILL THRU PIPE FOR PLUG WELD TYP. 4 PLACES 90° APART.



SECTION A-A
SCALE 1 / 20

| ITEM | QTY | PART NUMBER | DESCRIPTION | MATERIAL |
|------|-----|-------------|---------------------|----------|
| 6 | 20 | 140280031 | Gusser-Stubshaft | A36 |
| 5 | 1 | 140280021 | Driven-Stubshaft | CR 1018 |
| 4 | 1 | 140280022 | Idle-Stubshaft | CR1018 |
| 3 | 2 | 140280020 | Shaft-Spacer | A36 |
| 2 | 2 | 140280050 | Shaft-Inner-Spacer | A36 |
| 1 | 1 | 140280023 | Shaft (SCH 80 PIPE) | A53B |

T. Cap...
3/12/09

This drawing and all equipment matter contains information proprietary to PARKSON CORPORATION and is issued subject to return upon demand and shall not be reproduced, copied, loaned, rented, or used for any purpose other than that for which it is specifically furnished without expressed written consent of PARKSON CORPORATION. The Owner, Project Engineer, and all users involved with the project design must implement and follow all safety standards required by local, state and federal laws concerning Parkson Corporation equipment into the overall project design. Parkson Corporation will not be responsible for location and/or placement of equipment in the plant design, nor a Parkson Corporation responsible for plant safety design and for the failure to follow appropriate safety precautions in the operation and maintenance of Parkson Corporation equipment.

PRELIMINARY **APPROVAL**
INFORMATION **CERTIFIED**

THIS DRAWING IS LIMITED TO FUNCTIONAL DESIGN. GENERAL ARRANGEMENT AND CLEARANCE. NO RESPONSIBILITY IS ACCEPTED BY PARKSON CORPORATION FOR OTHER DIMENSIONS, QUANTITIES, OR COORDINATION WITH OTHER EQUIPMENT OR DRAWINGS EXCEPT AS STATED IN PURCHASE ORDER.

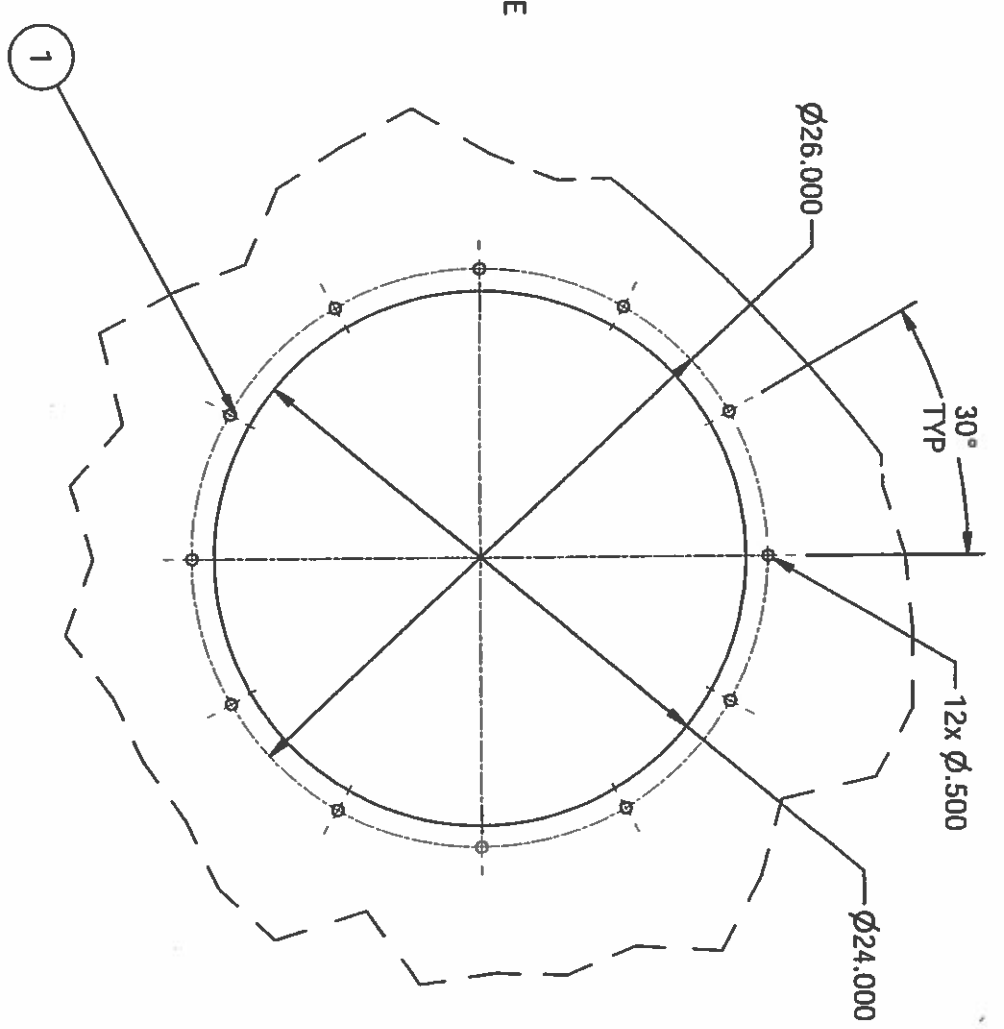
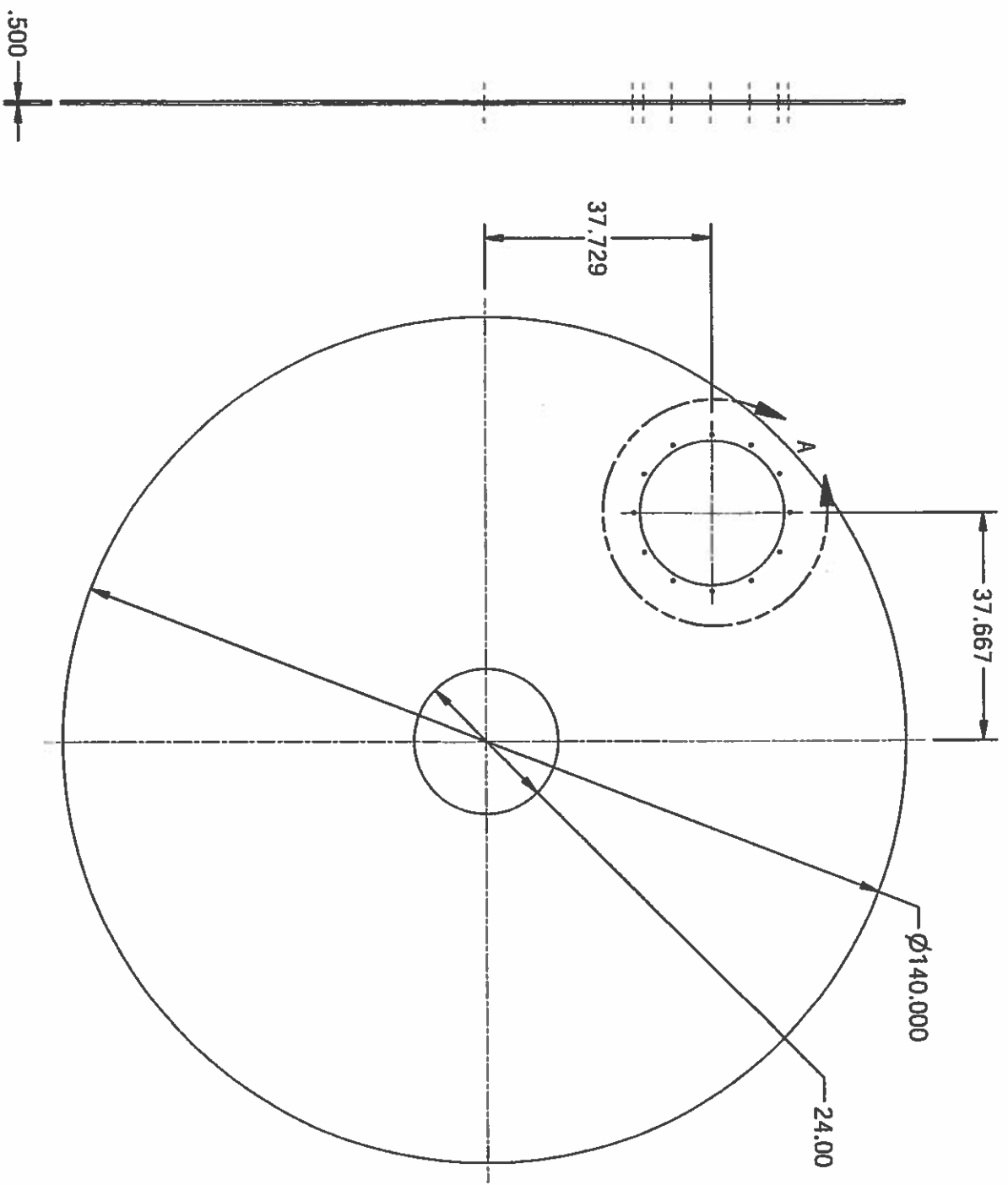
| | |
|------------|------------|
| DATE | 11/15/2008 |
| DRAWN BY | A.R. |
| CHECKED BY | ENG |
| DATE | 1/7/2008 |
| SCALE | SEE DWG |
| SIZE | B |

Parkson

PROJECT NAME: CAPE MAY
 TITLE: GEO REACTOR GR140X28
 REFERENCE INFORMATION
 DRAWING NO: GR140280002
 SHEET 1 OF 1

NOTES:

1. REMOVE ALL BURRS AND SHARP EDGES: ROUND ALL CORNERS.
2. REMOVE ALL WELD SPATTER, SLAG AND DISCOLORATION.
3. MATERIAL : A36



DETAIL A
SCALE 1 / 8

Handwritten signature and date:
3/12/09

| REV | DESCRIPTION | BY | DATE | ECO | CHK |
|-----|-------------|----|------|-----|-----|
| | | | | | |

TOLERANCES
Except where noted

| | |
|-------------------|--------|
| 1-FIG DEC | 3.000 |
| 2-FIG DEC | 4.06 |
| ANGULAR | 4.172° |
| MAX EDGE RLD | .13 |
| WELD SIZE | 7/8 |
| MACHINED SURFACES | 150 |

| ITEM | QTY | PART NUMBER | DESCRIPTION | MATERIAL |
|------|-----|-------------|--|----------|
| 1 | 12 | GR140280041 | Threaded Stud .06 x .45 (angle), 1.75LG Chamfer both ends, 1/2-13 UNC-2A | SS304 |

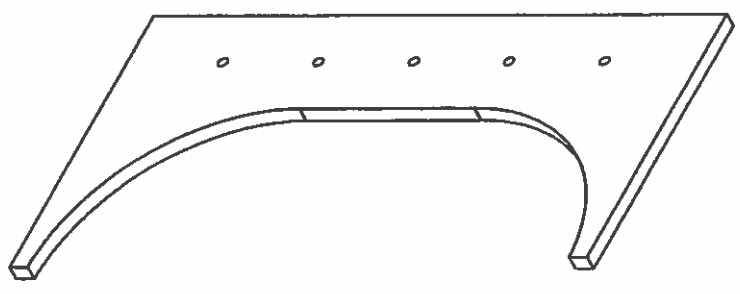
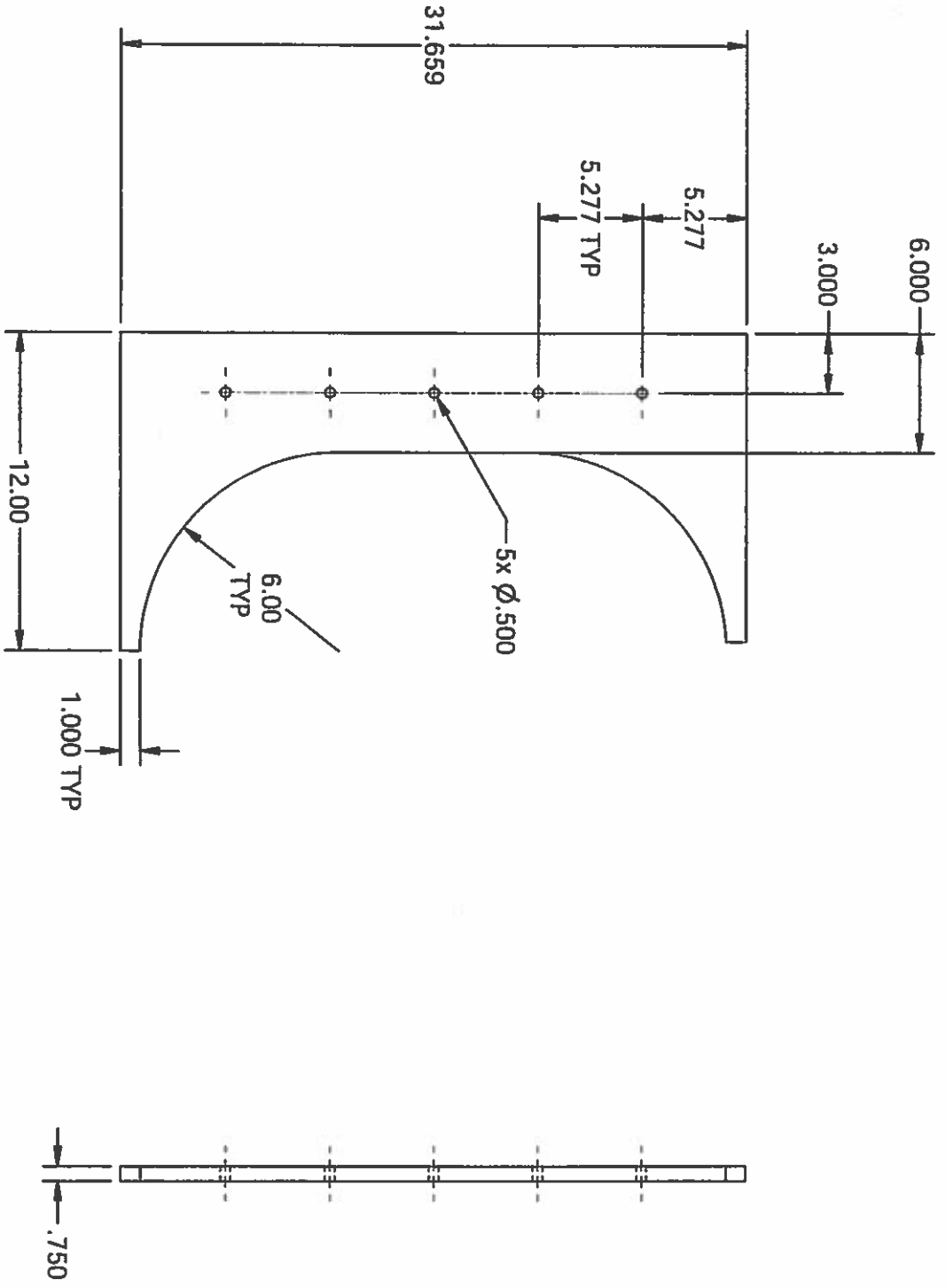
DRAWN BY: RAAGHU
CHECKED BY: ENG
SCALE: 1.25
PART LIST

| TITLE | DRAWING NO. | REV |
|----------|-------------|-----|
| BULKHEAD | GR140280004 | |

This drawing and all appurtenant matter contains information proprietary to PARKSON CORPORATION and is loaned subject to return upon demand and must not be reproduced, copied, loaned, revealed, nor used for any purpose other than that for which it is specifically furnished without expressed written consent of PARKSON CORPORATION.

NOTES:

1. REMOVE ALL BURRS AND SHARP EDGES: ROUND ALL CORNERS.
2. REMOVE ALL WELD SPATTER, SLAG AND DISCOLORATION.
3. MATERIAL : A36



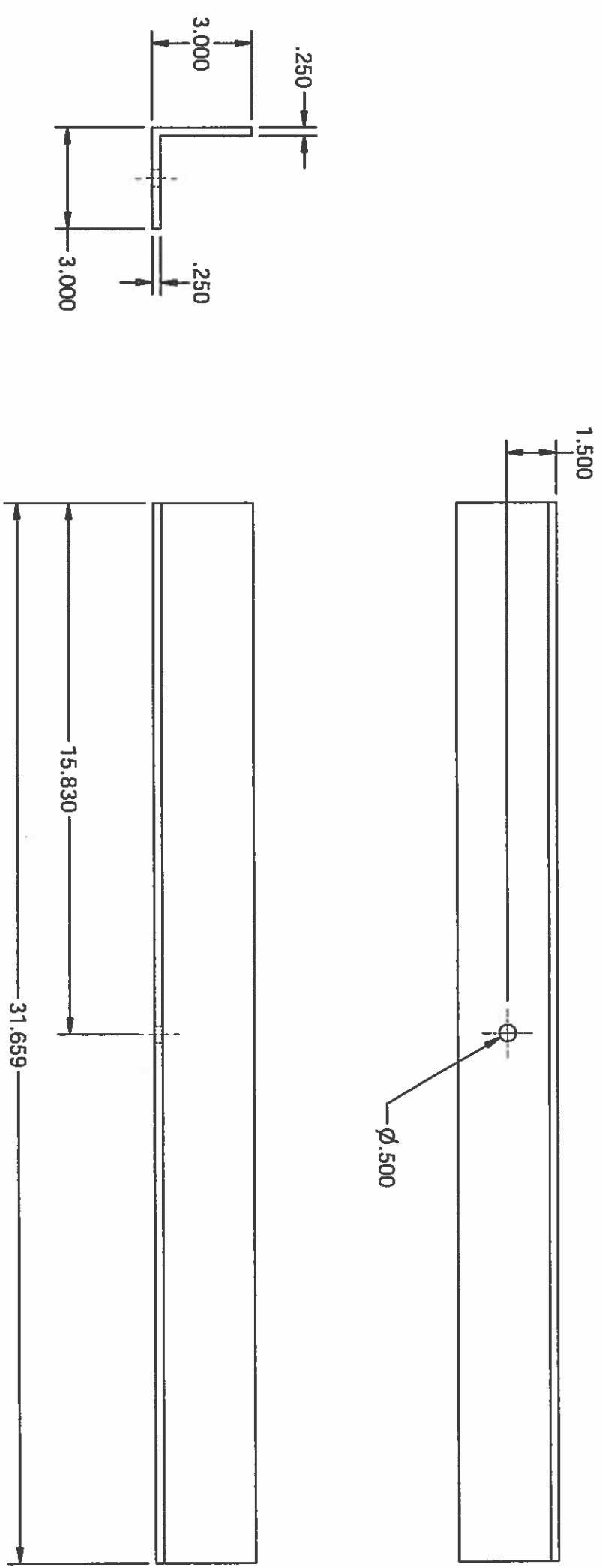
Handwritten signature and date:
 3/12/09

| TOLERANCES Except where noted 3-FIG DEC ±.030 2-FIG DEC ±.06 ANGULAR ±1/2° MAX EDGE RAD .13 WELD SIZE 1/8 MACHINED SURFACES 150 | | DRAWN BY: rgrhup CHECKED BY: ENG DATE: 6/9/2008 SCALE: 1/8 WEIGHT: B SIZE: B | REVISION SCHEDULE <table border="1"> <tr> <th>REV</th> <th>DESCRIPTION</th> <th>BY</th> <th>DATE</th> <th>ECO</th> <th>CHK</th> </tr> <tr> <td> </td> <td> </td> <td> </td> <td> </td> <td> </td> <td> </td> </tr> </table> | REV | DESCRIPTION | BY | DATE | ECO | CHK | | | | | | |
|---|-------------|---|---|-----|-------------|----|------|-----|-----|--|--|--|--|--|--|
| REV | DESCRIPTION | BY | DATE | ECO | CHK | | | | | | | | | | |
| | | | | | | | | | | | | | | | |
| PARKSON TITLE: SPOKE_CENTER_OUT_LAT DRAWING NO: GR140280006 SHEET 1 OF 1 | | REV: | NOT TO EXCEED: | | | | | | | | | | | | |

This drawing and all appurtenant matter contains information proprietary to PARKSON CORPORATION and is loaned subject to return upon demand and must not be reproduced, copied, loaned, revealed, nor used for any purpose other than that for which it is specifically furnished without expressed written consent of PARKSON CORPORATION.

NOTES:

1. REMOVE ALL BURRS AND SHARP EDGES: ROUND ALL CORNERS.
2. REMOVE ALL WELD SPATTER, SLAG AND DISCOLORATION.
3. MATERIAL : A36 (EQUAL ANGLE)



| REV | DESCRIPTION | BY | DATE | ECO | CHK |
|-----|-------------|----|------|-----|-----|
| | | | | | |

| TOLERANCES | | DRAWN BY | | DATE | |
|--------------------|-------|----------------|-----------|-----------|------|
| Except where noted | | BRGHU | 5/22/2008 | | |
| 3-FIG DEC | ±.030 | CHECKED BY | ENG | 1/22/2008 | DATE |
| 2-FIG DEC | ±.06 | SCALE | 1:4 | WEIGHT | |
| ANGULAR | ±.12° | ER | B | SIZE | |
| MAX EDGE RAD | .13 | NEXT TO EXCEED | | | |
| WELD SIZE | 1/8 | | | | |
| MACHINED SURFACES | 150 | | | | |

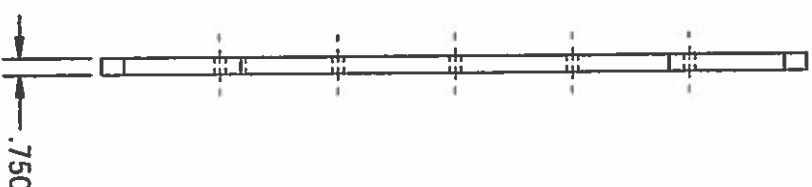
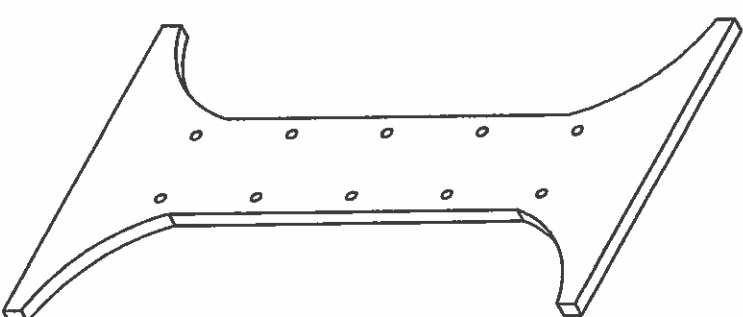
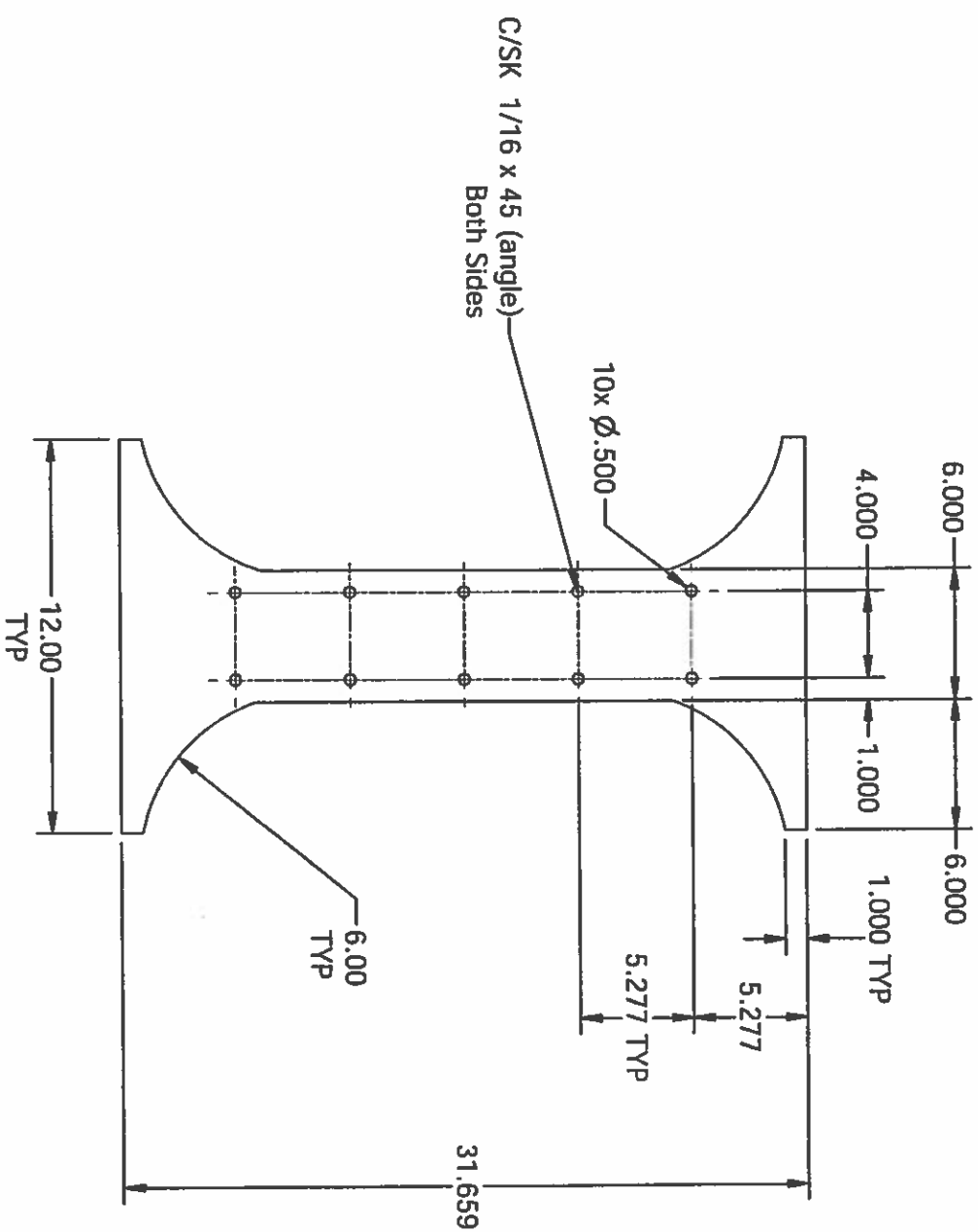


| | |
|------------|------------------|
| TITLE | 3X3X1/4 OUT BEAM |
| DRAWING NO | GR140280007 |
| REV | |

John P. ...
3/12/09

NOTES:

1. REMOVE ALL BURRS AND SHARP EDGES: ROUND ALL CORNERS.
2. REMOVE ALL WELD SPATTER, SLAG AND DISCOLORATION.
3. MATERIAL : A36



John B. W. JR
3/12/09

| | | | |
|---|-------|----------------------|-------------------|
| TOLERANCES Except where noted | | DRAWING BY raphup | DATE 6/9/2008 |
| 3-FIG DEC | ±.030 | CHECKED BY ENG | DATE 1/22/2008 |
| 2-FIG DEC | ±.06 | SCALE 1/8" | WEIGHT |
| ANGULAR | ±1/2° | ER: | SIZE |
| MAX EDGE RAD | .13 | | |
| WELD SIZE | 1/8 | | |
| MACHINED SURFACES | 150 | | |
| NOT TO EXCEED | | | |

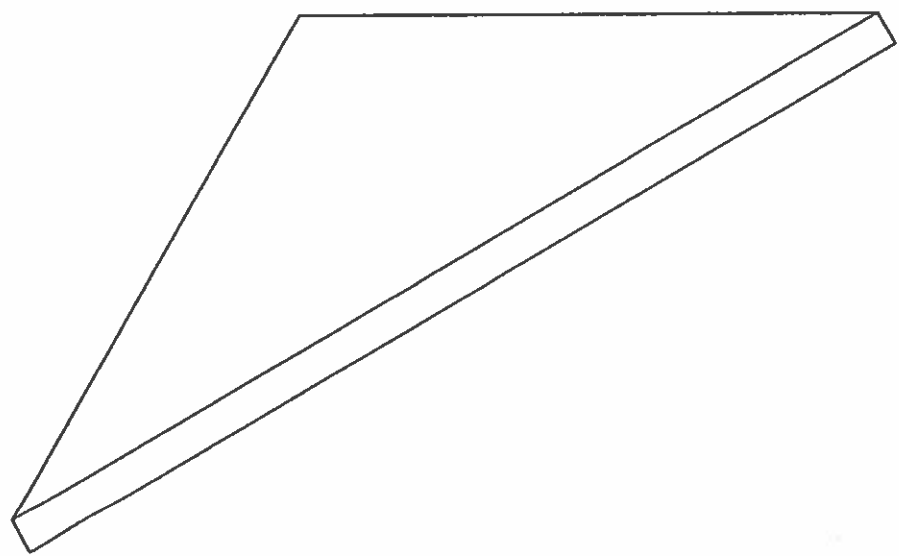
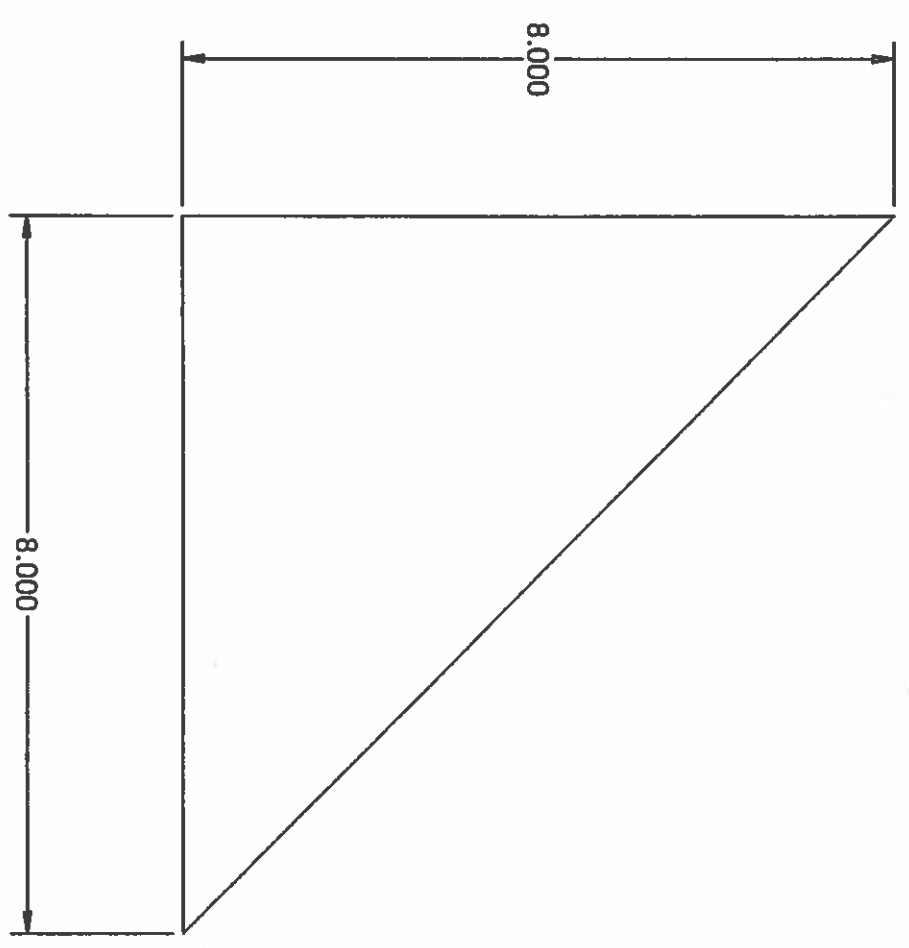
| | | | |
|--------------------------|-------------|----|------|
| REVISION SCHEDULE | | | |
| REV | DESCRIPTION | BY | DATE |
| | | | |
| | | | |

| | | |
|------------------------------|--|----------------------------|
| TITLE SPOKE_CENTER | | DRAWING NO. GR140280008 |
| PARKSON | | SHEET 1 OF 1 |

This drawing and all appurtenant matter contains information proprietary to PARKSON CORPORATION and is loaned subject to return upon demand and must not be reproduced, copied, loaned, revealed, nor used for any purpose other than that for which it is specifically furnished without expressed written consent of PARKSON CORPORATION.

NOTES:

1. REMOVE ALL BURRS AND SHARP EDGES: ROUND ALL CORNERS.
2. REMOVE ALL WELD SPATTER, SLAG AND DISCOLORATION.
3. MATERIAL : A36



John B. W. 2/14
3/12/09

| REV | DESCRIPTION | BY | DATE | ECO | CHK |
|-------------------|-------------|----|------|-----|-----|
| REVISION SCHEDULE | | | | | |
| | | | | | |

| TOLERANCES | | DRAWN BY | DATE |
|-------------------|--------------------|----------|-----------|
| 3-FIG DEC | Except where noted | hyzas | 5/22/2008 |
| 2-FIG DEC | | ENG | 1/22/2008 |
| ANGULAR | | SCALE | WEIGHT |
| MAX EDGE RAD | | 1:2 | |
| WELD SIZE | | ER | SITE |
| MACHINED SURFACES | | 150 | 8 |
| NOT TO EXCEED | | | |

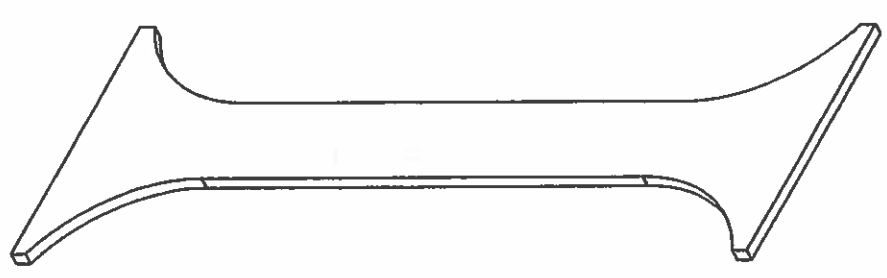
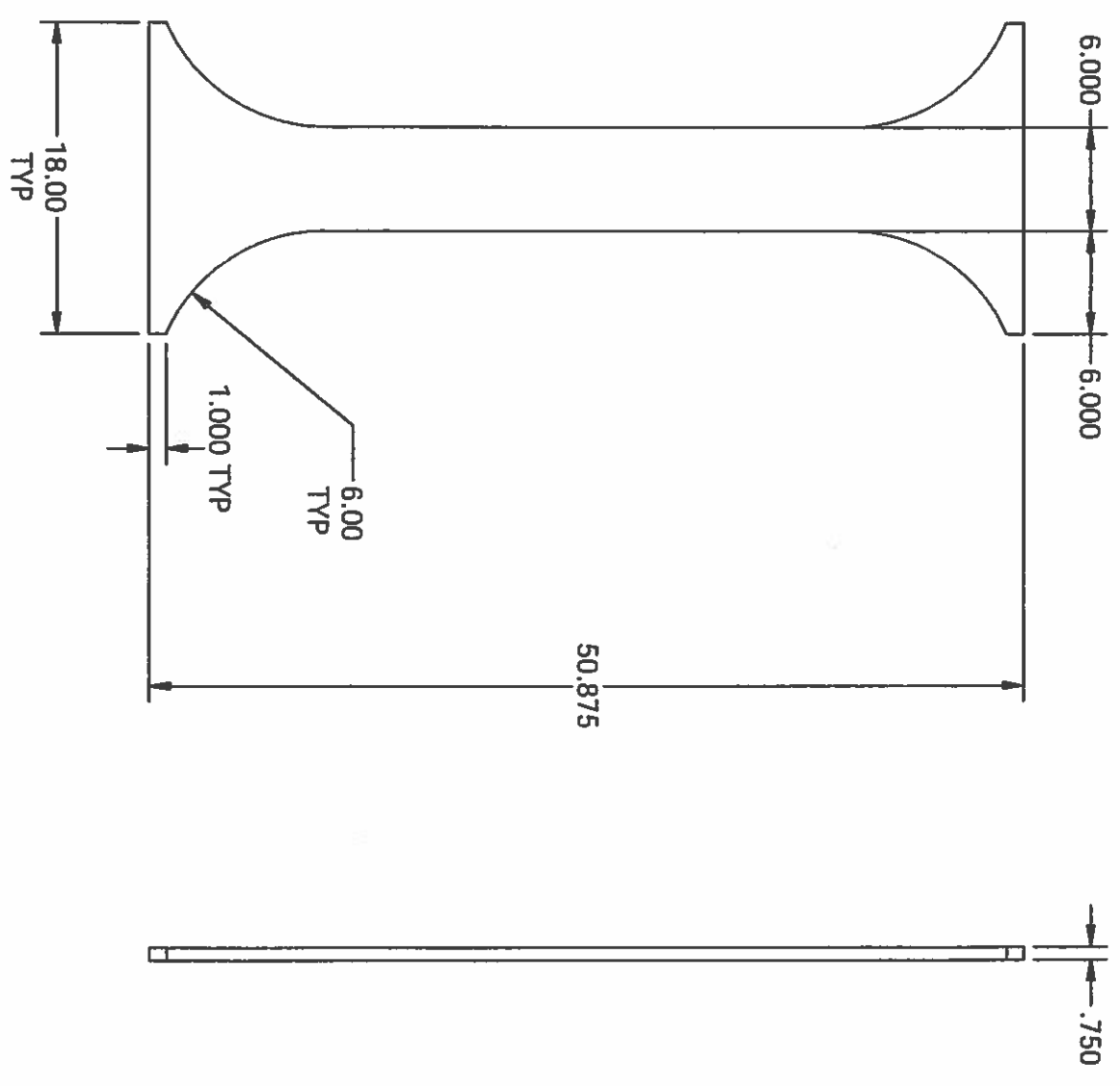


| | |
|--------------|--------------|
| TITLE | TR1_BRACKETS |
| DRAWING NO. | GR140280009 |
| SHEET 1 OF 1 | REV |

This drawing and all appurtenant matter contains information proprietary to PARKSON CORPORATION and is loaned subject to return upon demand and must not be reproduced, copied, loaned, revealed, nor used for any purpose other than that for which it is specifically furnished without expressed written consent of PARKSON CORPORATION.

NOTES:

1. REMOVE ALL BURRS AND SHARP EDGES: ROUND ALL CORNERS.
2. REMOVE ALL WELD SPATTER, SLAG AND DISCOLORATION.
3. MATERIAL : A36



Rev. [Signature]
3/12/09

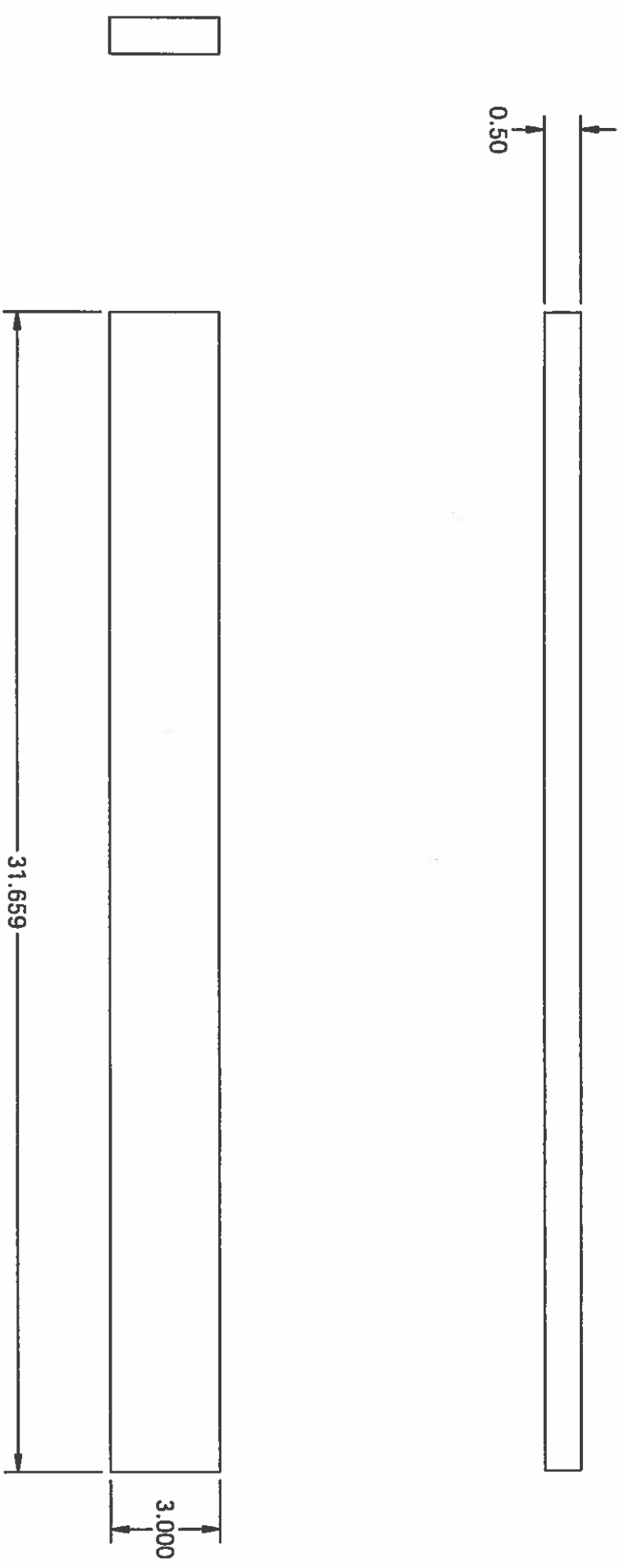
| | | | |
|--|--|----------------------------|-------------------|
| TOLERANCES Except where noted | | DRAWN BY maghup | DATE 6/9/2008 |
| 2-FIG DEC 2-FIG DEC ANGULAR MAX EDGE RAD WELD SIZE MACHINED SURFACES NOT TO EXCEED | .030 .06 ±12° .13 1/8 150 | CHECKED BY ENG | DATE 1/22/2009 |
| REVISION SCHEDULE | | SCALE 1/10 | WEIGHT B |
| REV | DESCRIPTION | BY | DATE |
| ECO | CHK | ECO | CHK |
| TITLE INSIDE_SPOKE_CENTER | | DRAWING NO. GR140280010 | |
| SHEET 1 OF 1 | | REV | |



This drawing and all appurtenant matter contains information proprietary to PARKSON CORPORATION and is loaned subject to return upon demand and must not be reproduced, copied, loaned, revealed, nor used for any purpose other than that for which it is specifically furnished without expressed written consent of PARKSON CORPORATION.

NOTES:

1. REMOVE ALL BURRS AND SHARP EDGES: ROUND ALL CORNERS.
2. REMOVE ALL WELD SPATTER, SLAG AND DISCOLORATION.
3. MATERIAL : A36



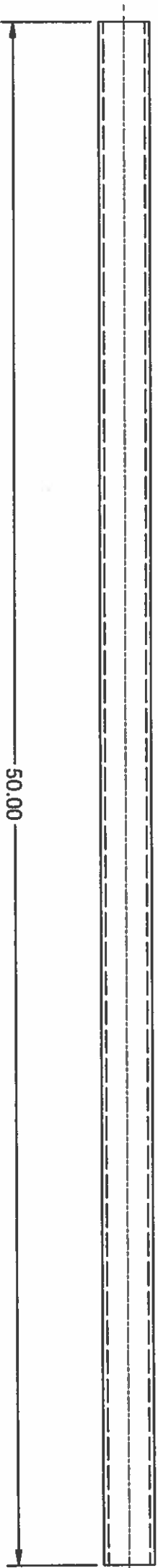
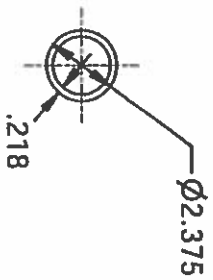
Handwritten signature and date:
 3/12/09

| | | | | | |
|---|---|--------------------|-------------------|----------------|-----------------|
| TOLERANCES Except where noted | | DRAWN BY mg/hup | DATE 6/9/2008 | Parkson | TITLE GUSSET |
| 3-FIG DEC 2-FIG DEC ANGULAR MAX EDGE RAD WELD SIZE MACHINED SURFACES | ±.030 ±.06 ±1/2° .13 1/8 150 ✓ | CHECKED BY ENG | DATE 1/22/2008 | | |
| REVISION SCHEDULE | | | | | |
| REV | DESCRIPTION | BY | DATE | ECO | CHK |

This drawing and all appurtenant matter contains information proprietary to PARKSON CORPORATION and is loaned subject to return upon demand and must not be reproduced, copied, loaned, revealed, nor used for any purpose other than that for which it is specifically furnished without expressed written consent of PARKSON CORPORATION.

NOTES:

1. REMOVE ALL BURRS AND SHARP EDGES: ROUND ALL CORNERS.
2. REMOVE ALL WELD SPATTER, SLAG AND DISCOLORATION.
3. MATERIAL : A36



Tube has to be cut on both ends to fit along the angles between both I-beams in a diagonal manner.

All welds will be per latest American Welding Society standards

All fillet welds per drawing

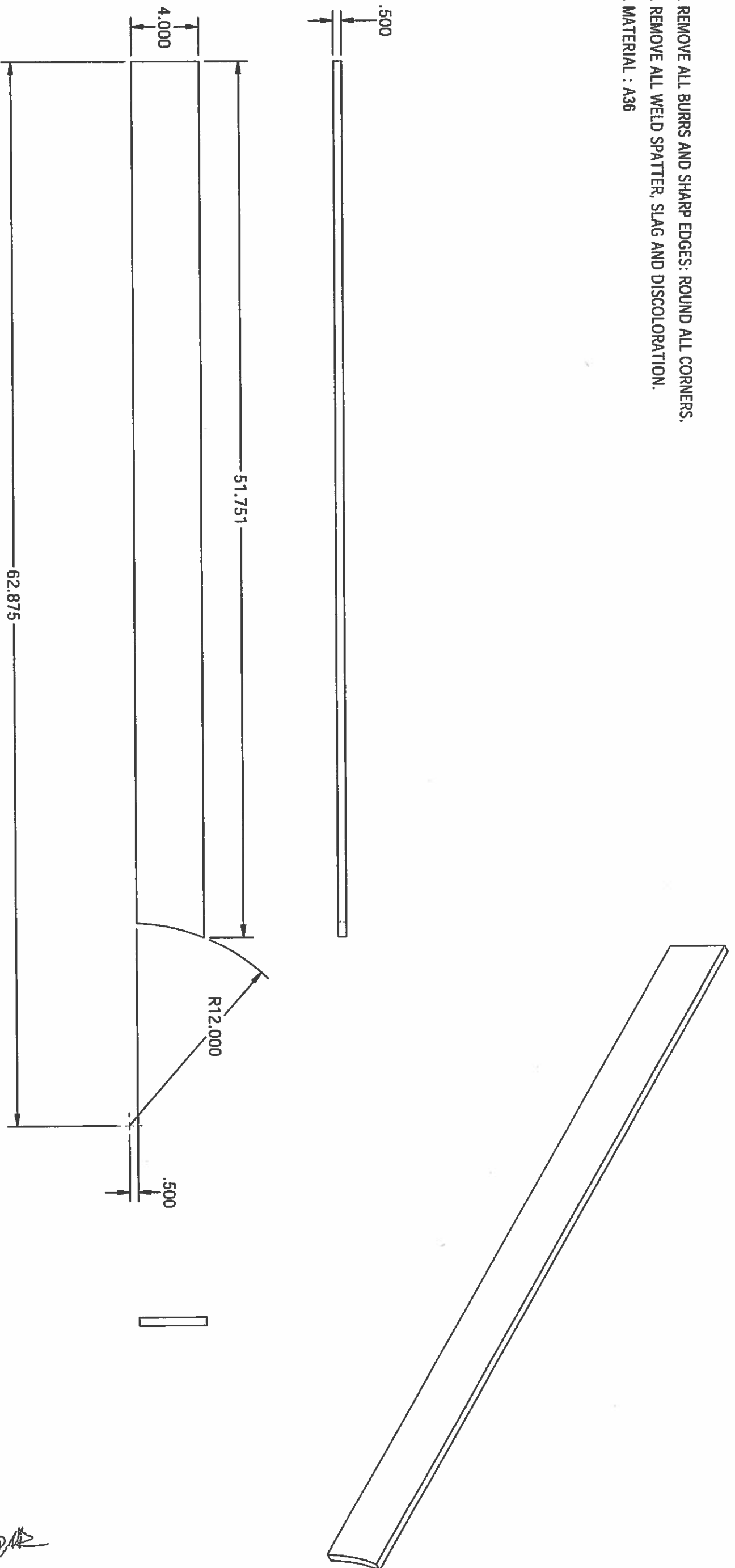
T. Campbell
3/12/09

| <p>TOLERANCES Except where noted</p> <p>3-FIN DEC ±.020 2-FIN DEC ±.06 ANGULAR ±12° MAX EDGE RAD .13 WELD SIZE 1/8 MACHINED SURFACES 1/8</p> | | <p>DRAWN BY RACHU</p> <p>CHECKED BY ENG</p> <p>SCALE 1/8</p> <p>ER: _____</p> | <p>DATE 5/22/2008</p> <p>DATE 1/22/2008</p> <p>WEIGHT _____</p> <p>SIZE B</p> | <p>TITLE EXTERNAL TUBE</p> | | | | | | | | | | | | |
|--|-------------|---|---|---------------------------------------|------|-----|-----|--|--|--|--|--|--|-----------------------|--|--|
| <p>REVISION SCHEDULE</p> <table border="1"> <thead> <tr> <th>REV</th> <th>DESCRIPTION</th> <th>BY</th> <th>DATE</th> <th>ECO</th> <th>CHK</th> </tr> </thead> <tbody> <tr> <td> </td> <td> </td> <td> </td> <td> </td> <td> </td> <td> </td> </tr> </tbody> </table> | | REV | DESCRIPTION | BY | DATE | ECO | CHK | | | | | | | <p>Parkson</p> | | |
| REV | DESCRIPTION | BY | DATE | ECO | CHK | | | | | | | | | | | |
| | | | | | | | | | | | | | | | | |
| <p>DRAWING NO GR140280012</p> | | <p>REV</p> | | | | | | | | | | | | | | |

This drawing and all appurtenant matter contains information proprietary to PARKSON CORPORATION and is loaned subject to return upon demand and must not be reproduced, copied, loaned, revealed, nor used for any purpose other than that for which it is specifically furnished without expressed written consent of PARKSON CORPORATION.

NOTES:

1. REMOVE ALL BURRS AND SHARP EDGES: ROUND ALL CORNERS.
2. REMOVE ALL WELD SPATTER, SLAG AND DISCOLORATION.
3. MATERIAL : A36



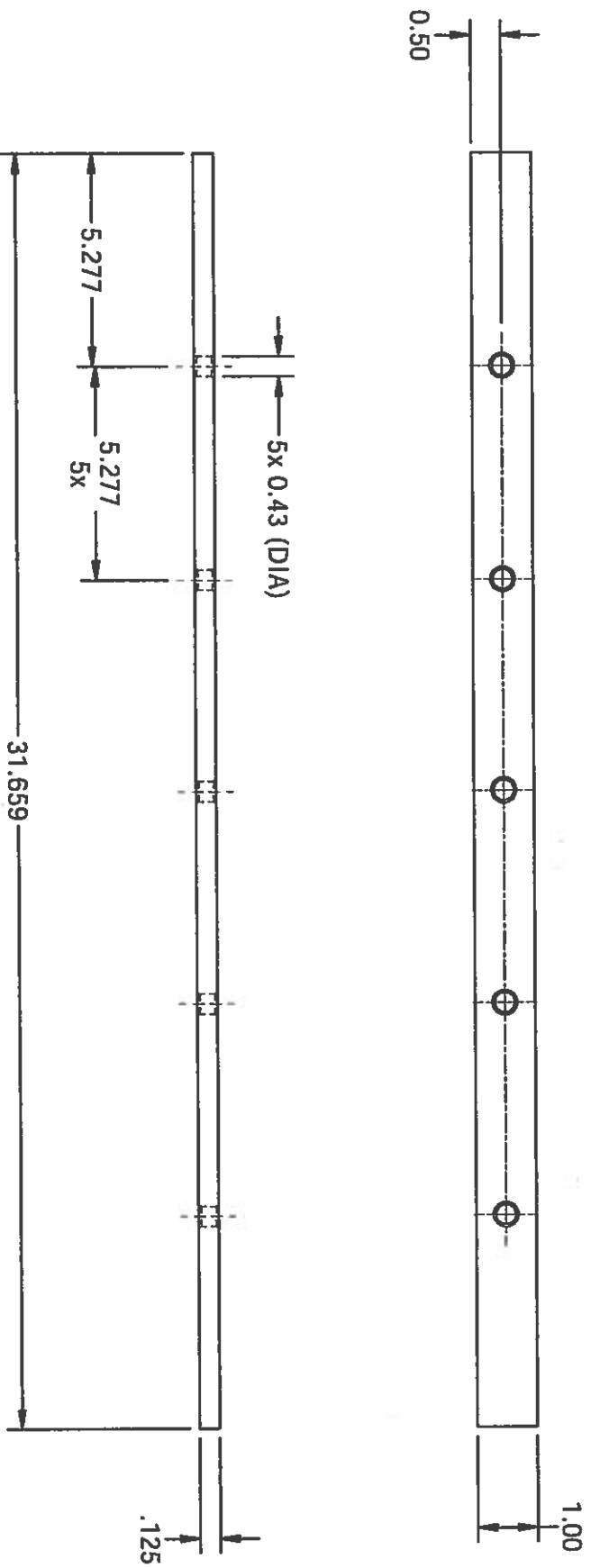
T. B. W. JR.
3/12/09

| | | | | | |
|---|---|-------------------|-------------------|--|-----------------------------------|
| TOLERANCES Except where noted | | DRAWN BY BAGHU | DATE 5/21/2008 | TITLE INSIDE SPOKE CENTER STIFFNER | |
| 3-FIG DEC 2-FIG DEC ANGULAR MAX EDGE RAD WELD SIZE MACHINED SURFACES | ±.000 ±.06 ±.12° .13 1/8 150 | CHECKED BY ENG | DATE 1/22/2008 | | DRAWING NO. GR140280013 |
| REVISION SCHEDULE | | SCALE 1:6 | WEIGHT 8 | REV | |
| REV | DESCRIPTION | BY | DATE | ECO | CHK |

This drawing and all appurtenant matter contains information proprietary to PARKSON CORPORATION and is loaned subject to return upon demand and must not be reproduced, copied, loaned, revealed, nor used for any purpose other than that for which it is specifically furnished without expressed written consent of PARKSON CORPORATION.

NOTES:

1. REMOVE ALL BURRS AND SHARP EDGES: ROUND ALL CORNERS.
2. REMOVE ALL WELD SPATTER, SLAG AND DISCOLORATION.
3. MATERIAL : 304SS



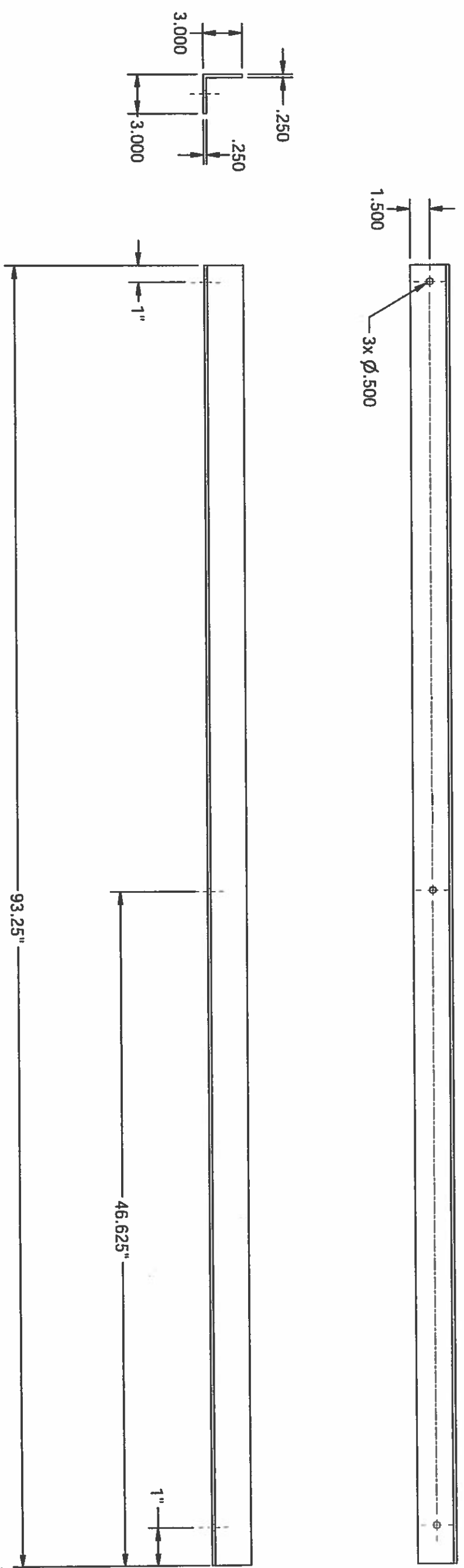
T. Co. Ba/ST
3/12/09

| | | | | | |
|--|-------------|-------------------|-------------------|----------------|----------------------------|
| TOLERANCES Except where noted 1-FIN DEC ±.030 2-FIN DEC ±.06 ANGULAR ±1/2° MAX EDGE RAD .13 WELD SIZE 1/8 MACHINED SURFACES 150 NOT TO EXCEED | | DRAWN BY RAGHU | DATE 5/22/2008 | Parkson | TITLE MESHFASTENER1 |
| REVISION SCHEDULE | | CHECKED BY ENG | DATE 1/22/2008 | | DRAWING NO. GR140280015 |
| REV | DESCRIPTION | BY | DATE | ECO | CHK |

This drawing and all appurtenant matter contains information proprietary to PARKSON CORPORATION and is loaned subject to return upon demand and must not be reproduced, copied, loaned, revealed, nor used for any purpose other than that for which it is specifically furnished without expressed written consent of PARKSON CORPORATION.

NOTES:

1. REMOVE ALL BURRS AND SHARP EDGES: ROUND ALL CORNERS.
2. REMOVE ALL WELD SPATTER, SLAG AND DISCOLORATION.
3. MATERIAL : 304SS (EQUAL ANGLE)



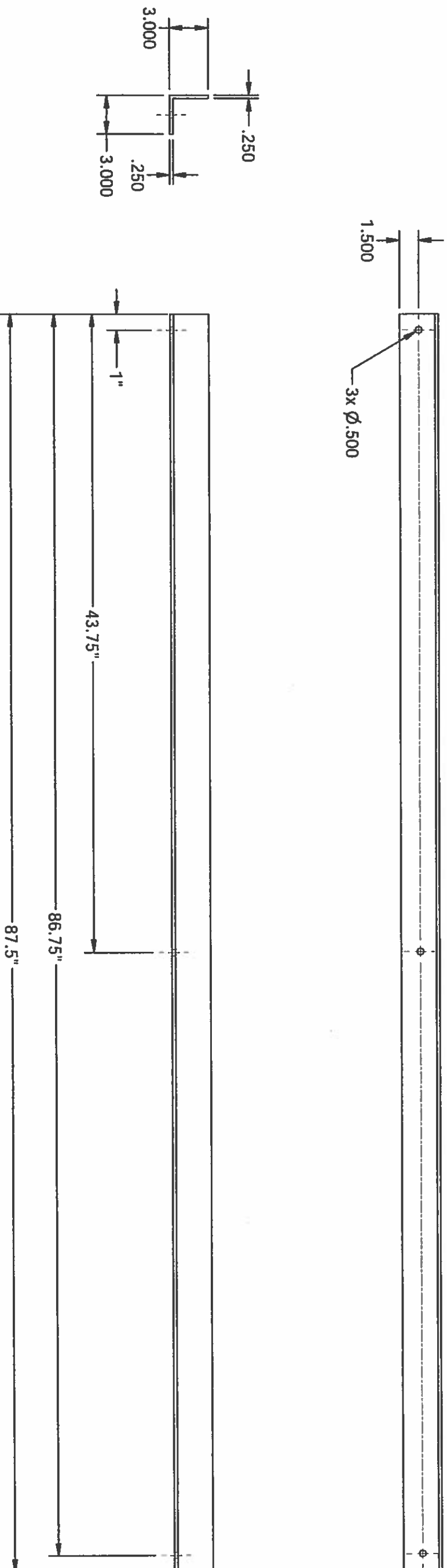
Handwritten signature and date:
 3/12/09

| TOLERANCES | | DRAWN BY | | DATE | | TITLE | |
|--------------------|-------------|-------------------|-----------|--------------|-----|----------------|--|
| Except where noted | | BRACHU | 5/22/2008 | | | MESHFASTENERS3 | |
| 3-FIG DEC | 3.000 | CHECKED BY | ENG | 1/22/2008 | | | |
| 2-FIG DEC | 3.06 | SCALE | 1:8 | WEIGHT | | | |
| ANGULAR | 4.17° | ER: | B | SIZE | | | |
| MAX EDGE RND | .13 | | | | | | |
| WELD SIZE | 1/8 | | | | | | |
| MACHINED SURFACES | 150 | DRAWING NO. | | GR140280016 | | REV | |
| NOT TO EXCEED | | REVISION SCHEDULE | | SHEET 1 OF 1 | | | |
| REV | DESCRIPTION | BY | DATE | ECO | CHK | | |

This drawing and all appurtenant matter contains information proprietary to PARKSON CORPORATION and is loaned subject to return upon demand and must not be reproduced, copied, loaned, revealed, nor used for any purpose other than that for which it is specifically furnished without expressed written consent of PARKSON CORPORATION.

NOTES:

1. REMOVE ALL BURRS AND SHARP EDGES: ROUND ALL CORNERS.
2. REMOVE ALL WELD SPATTER, SLAG AND DISCOLORATION.
3. MATERIAL : 304 (EQUAL ANGLE)



T. B. W. A.
3/12/09

| | | | |
|--|--|-----------------------------------|-------------------|
| TOLERANCES Except where noted 3-FIG DEC 4.000 2-FIG DEC 4.06 ANGULAR ±1/2° MAX EDGE RAD .13 WELD SIZE 1/8 MACHINED SURFACES 150 ✓ NOT TO EXCEED 9 | | DRAWN BY RACHU 5/22/2008 | DATE 5/22/2008 |
| CHECKED BY ENG 1/22/2008 | | SCALE 1:1 | WEIGHT 9 |
| | | | |
| TITLE MESHFASTENERCENTER | | DRAWING NO. GR140280017 | REV |

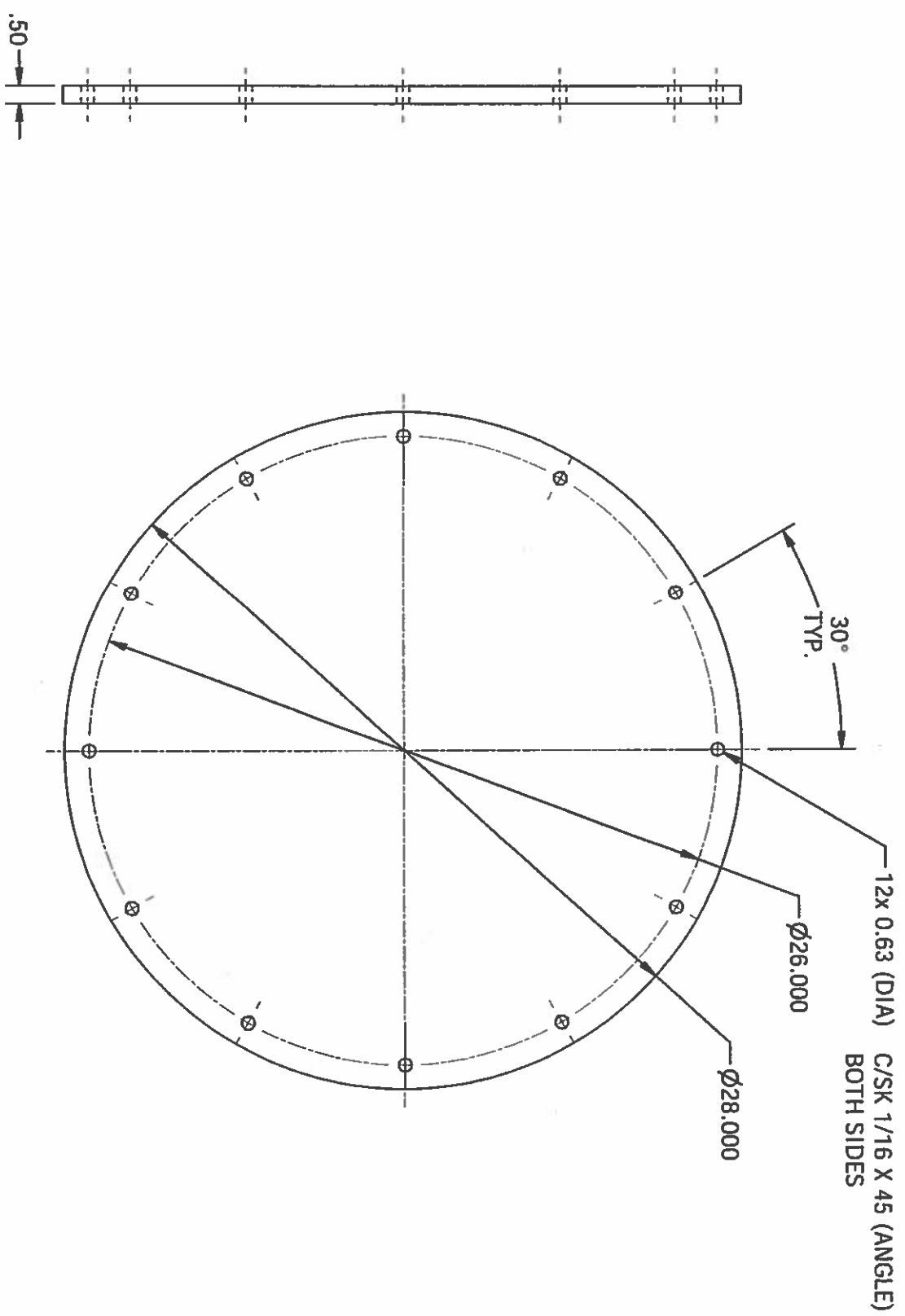
This drawing and all appurtenant matter contains information proprietary to PARKSON CORPORATION and is loaned subject to return upon demand and must not be reproduced, copied, loaned, revealed, nor used for any purpose other than that for which it is specifically furnished without expressed written consent of PARKSON CORPORATION.

REVISION SCHEDULE

| REV | DESCRIPTION | BY | DATE | ECO | CHK |
|-----|-------------|----|------|-----|-----|
| | | | | | |

NOTES:

1. REMOVE ALL BURRS AND SHARP EDGES: ROUND ALL CORNERS.
2. REMOVE ALL WELD SPATTER, SLAG AND DISCOLORATION.
3. MATERIAL : A36



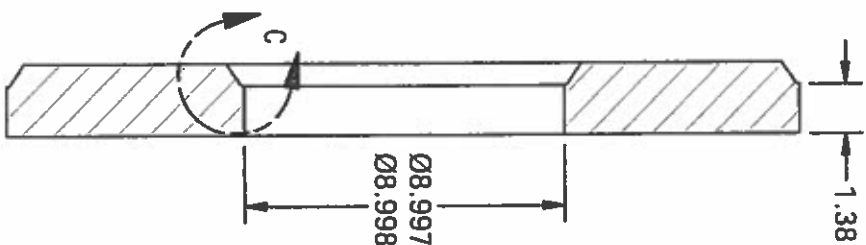
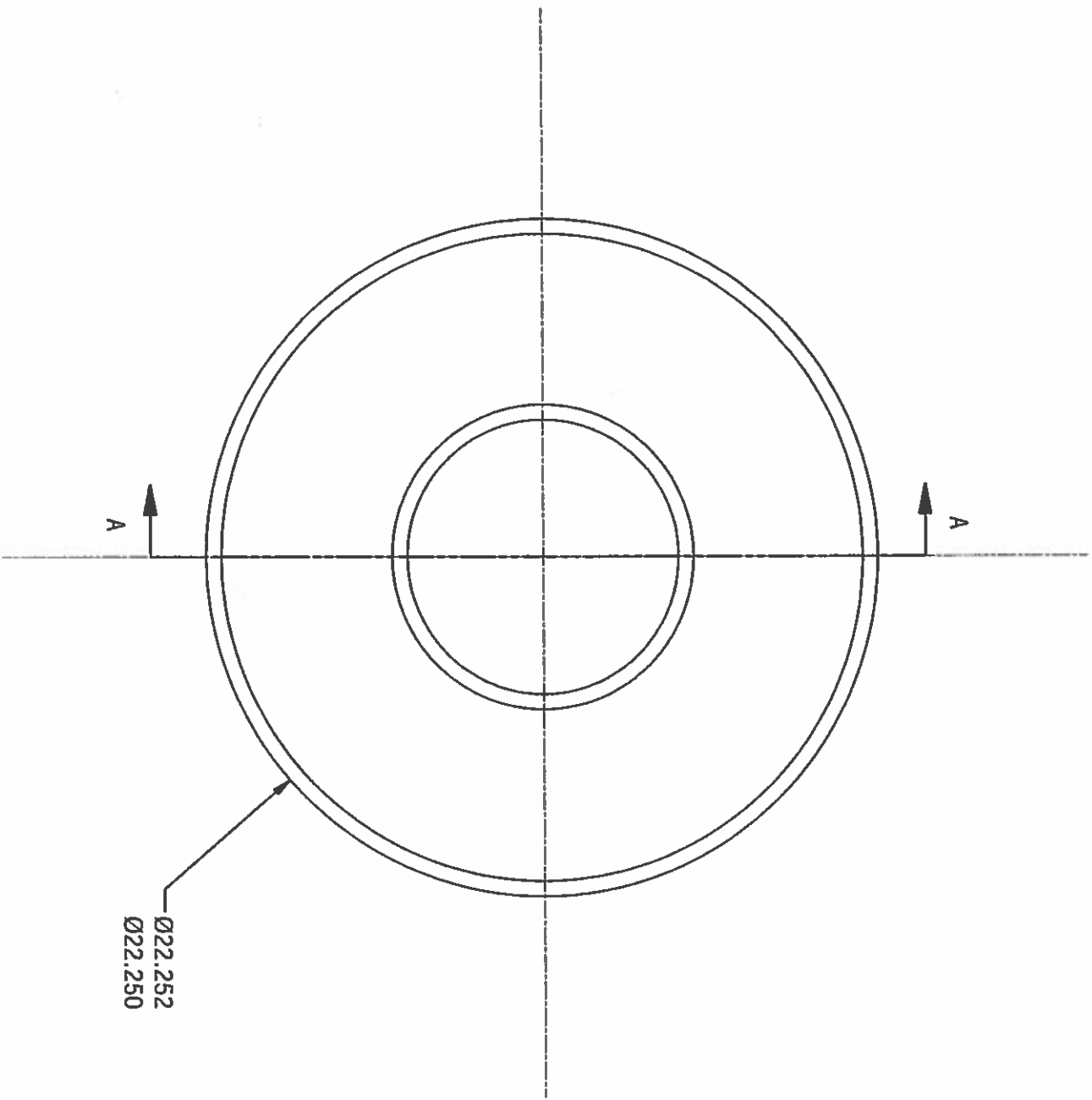
John B. [Signature]
3/12/09

| <p>TOLERANCES Except where noted</p> <p>3-FIG DEC 0.030 2-FIG DEC 0.06 ANGULAR ±.12° MAX EDGE RAD .13 WELD SIZE 1/8 MACHINED SURFACES 150</p> | | <p>DRAWN BY RACHU 5/23/2008</p> | | <p>DATE 5/23/2008</p> | | | | | | | | | | | | | |
|--|-------------|---|------------------------------------|---------------------------|-----|------|-----|-----|--|--|--|--|--|--|-----------------------|--|--|
| <p>3-FIG DEC 0.030 2-FIG DEC 0.06 ANGULAR ±.12° MAX EDGE RAD .13 WELD SIZE 1/8 MACHINED SURFACES 150</p> | | <p>CHECKED BY ENG 1/22/2008</p> | | <p>DATE 1/22/2008</p> | | | | | | | | | | | | | |
| <p>SCALE 1:6</p> | | <p>WEIGHT 8</p> | | <p>SIZE 8</p> | | | | | | | | | | | | | |
| <p>REVISION SCHEDULE</p> <table border="1"> <thead> <tr> <th>REV</th> <th>DESCRIPTION</th> <th>BY</th> <th>DATE</th> <th>ECO</th> <th>CHK</th> </tr> </thead> <tbody> <tr> <td> </td> <td> </td> <td> </td> <td> </td> <td> </td> <td> </td> </tr> </tbody> </table> | | | REV | DESCRIPTION | BY | DATE | ECO | CHK | | | | | | | <p>Parkson</p> | | |
| REV | DESCRIPTION | BY | DATE | ECO | CHK | | | | | | | | | | | | |
| | | | | | | | | | | | | | | | | | |
| <p>TITLE COVER</p> | | | <p>DRAWING NO. GR140280019</p> | | | | | | | | | | | | | | |
| <p>SHEET 1 OF 1</p> | | | <p>REV</p> | | | | | | | | | | | | | | |

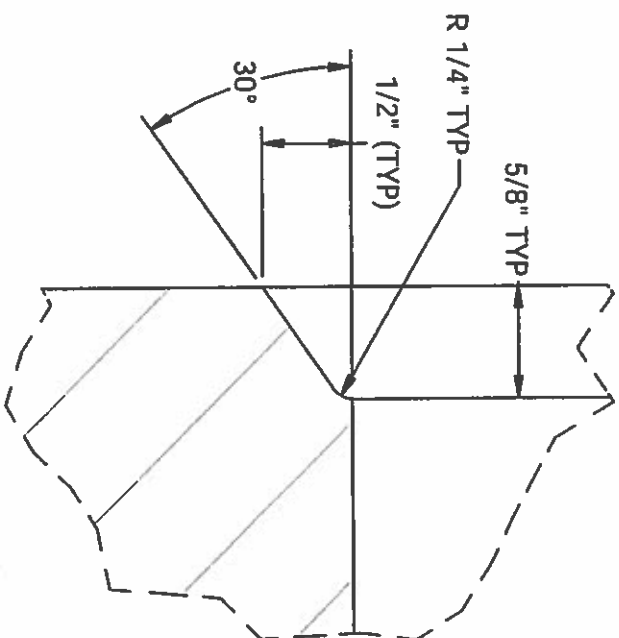
This drawing and all appurtenant matter contains information proprietary to PARKSON CORPORATION and is loaned subject to return upon demand and must not be reproduced, copied, loaned, revealed, nor used for any purpose other than that for which it is specifically furnished without expressed written consent of PARKSON CORPORATION.

NOTES:

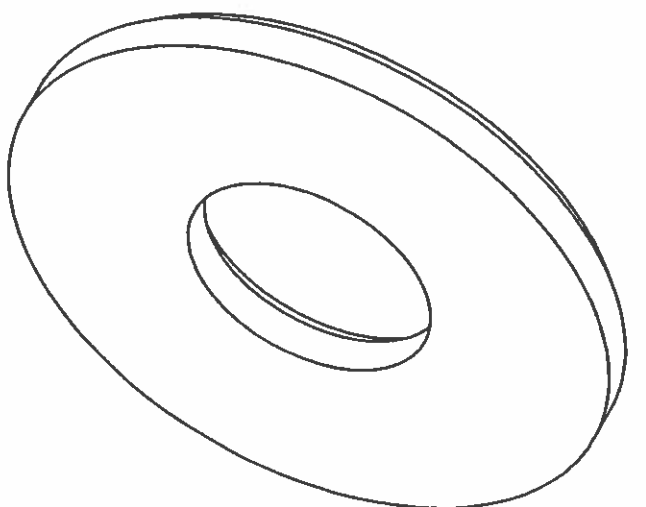
1. REMOVE ALL BURRS AND SHARP EDGES: ROUND ALL CORNERS.
2. MATERIAL A36
3. DETAIL C IS THE SAME AS THE OUTER PROFILE OF THE PART.



SECTION A-A
SCALE 1/5



DETAIL C
SCALE 1 : 1



Tom B...
3/12/09

| REV | DESCRIPTION | BY | DATE | ECO | CHK |
|-----|-------------|----|------|-----|-----|
| | | | | | |

REVISION SCHEDULE

| REV | DESCRIPTION | BY | DATE | ECO | CHK |
|-----|-------------|----|------|-----|-----|
| | | | | | |

TOLERANCES
Except where noted

| | |
|-------------------|-------|
| 3-FIG DEC | ±.000 |
| 2-FIG DEC | ±.06 |
| ANGULAR | ±1/2° |
| MAX EDGE RAD | .13 |
| WELD SIZE | 1/8 |
| MACHINED SURFACES | 150 |
| NOT TO EXCEED | 150 |

| DRAWN BY | DATE | CHECKED BY | DATE |
|----------|------------|------------|-----------|
| address | 11/15/2008 | ENG | 1/22/2008 |

| DRIVING NO. | SCALE | WEIGHT | SIZE |
|-------------|-------|--------|------|
| GR140280020 | 4 | 5 | B |

Shaft-Spacer

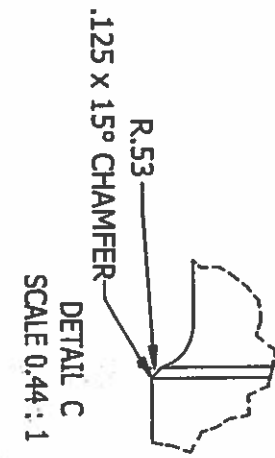
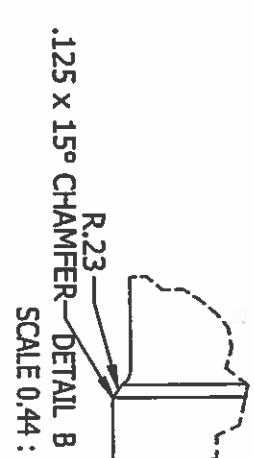
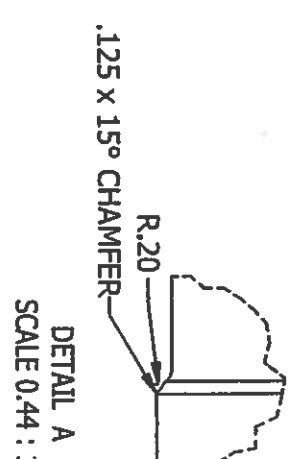
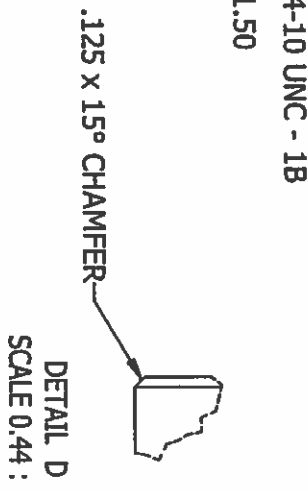
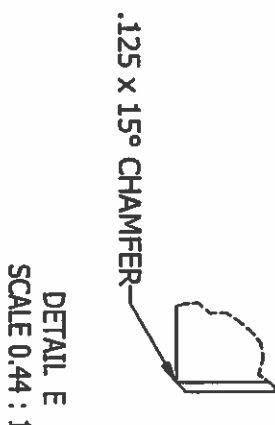
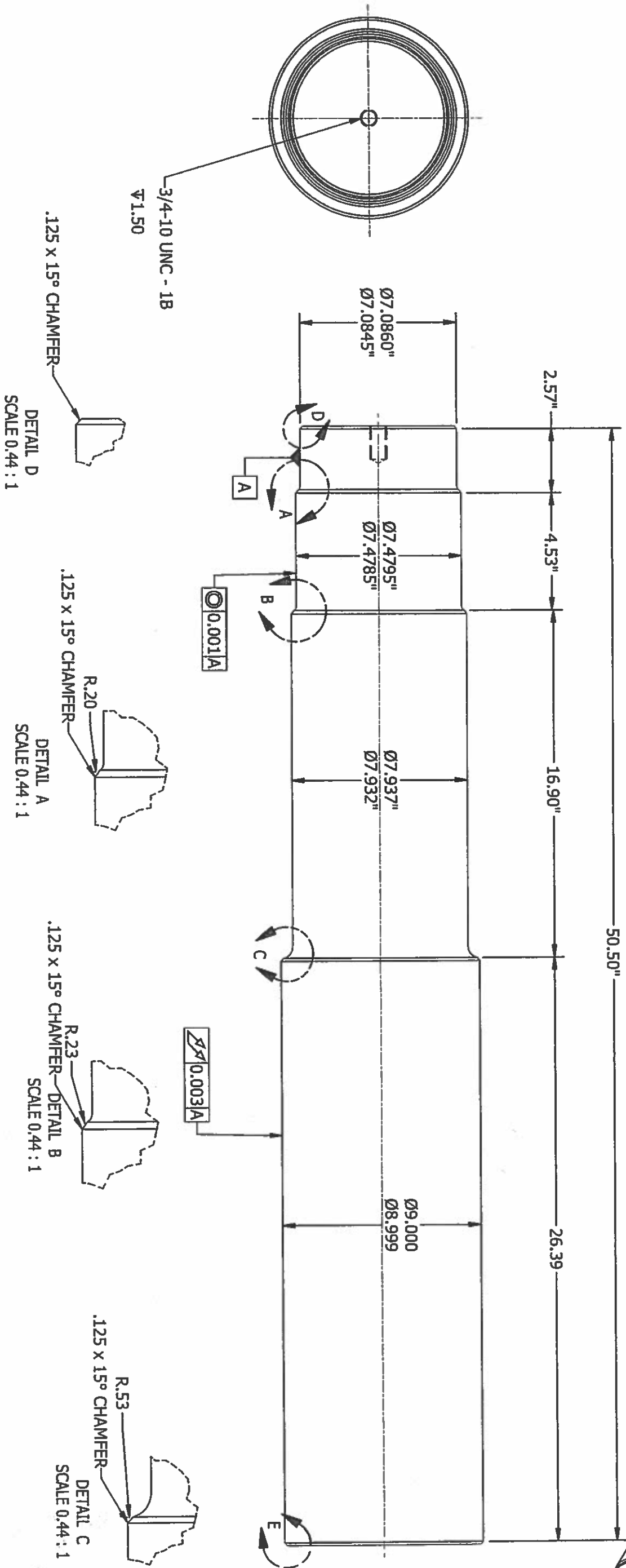
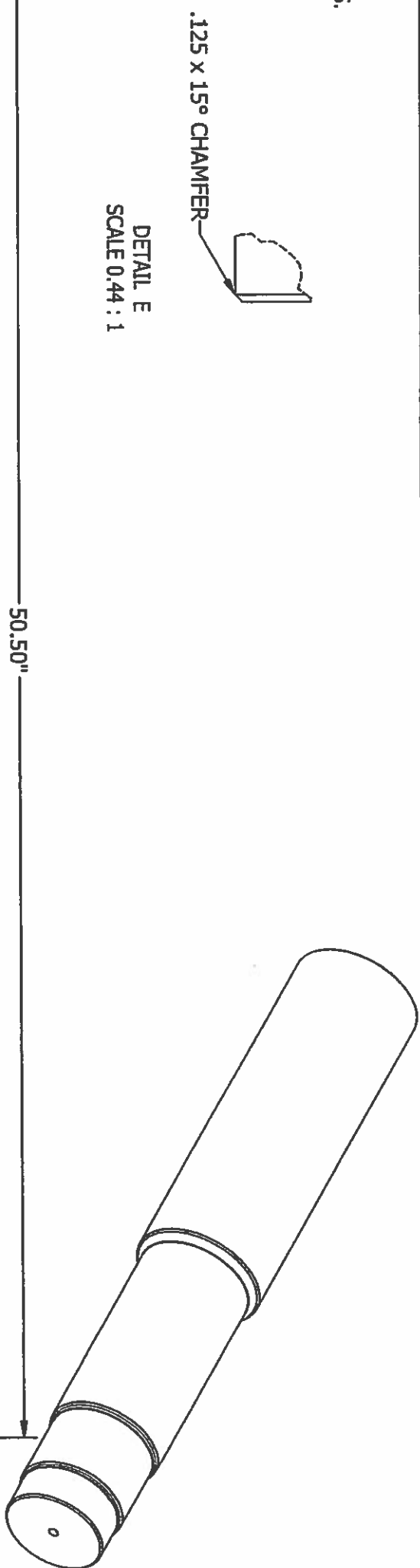


GR140280020

SHEET 1 OF 1

NOTES:

1. REMOVE ALL BURRS AND SHARP EDGES: ROUND ALL CORNERS.
2. REMOVE ALL WELD SPATTER, SLAG AND DISCOLORATION.
3. MATERIAL CR 1018



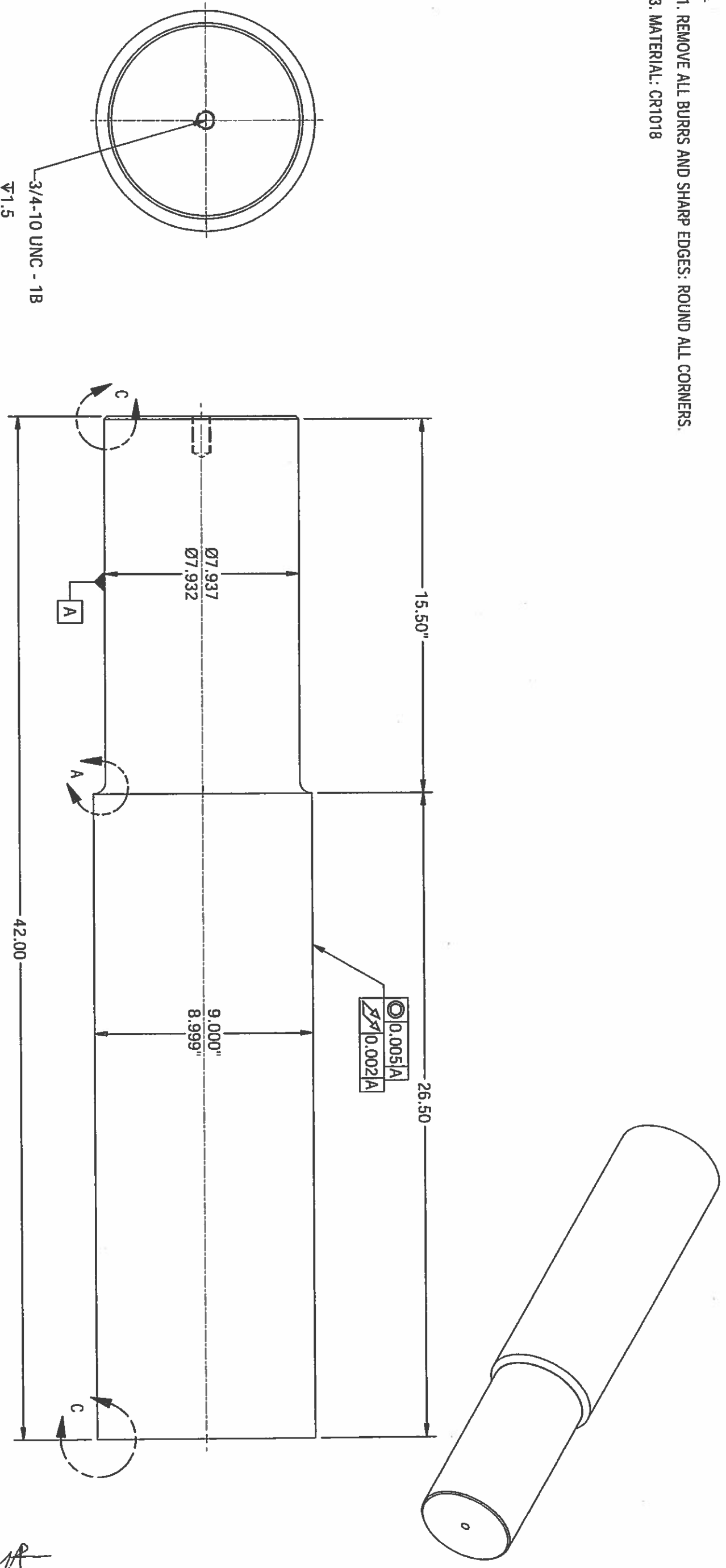
Handwritten signature and date: 3/12/09

| TOLERANCES Except where noted 3-FIG DEC ±.030 2-FIG DEC ±.06 ANGULAR ±1/2° MAX EDGE RND .13 WELD SIZE 1/8 MACHINED SURFACES NOT TO EXCEED 150 | | DRAWN BY: A.R. CHECKED BY: ENG DATE: 11/9/2008 DATE: 1/22/2008 SCALE: 4 WEIGHT: 5 SIZE: B | Revision Schedule <table border="1"> <tr> <th>REV</th> <th>DESCRIPTION</th> <th>BY</th> <th>DATE</th> <th>ECO</th> <th>CHK</th> </tr> <tr> <td> </td> <td> </td> <td> </td> <td> </td> <td> </td> <td> </td> </tr> </table> | REV | DESCRIPTION | BY | DATE | ECO | CHK | | | | | | |
|---|-------------|---|---|-----|-------------|----|------|-----|-----|--|--|--|--|--|--|
| REV | DESCRIPTION | BY | DATE | ECO | CHK | | | | | | | | | | |
| | | | | | | | | | | | | | | | |
| Particulars 3-FIG DEC 2-FIG DEC ANGULAR MAX EDGE RND WELD SIZE MACHINED SURFACES NOT TO EXCEED | | DATE: 11/9/2008 DATE: 1/22/2008 SCALE: 4 WEIGHT: 5 SIZE: B | Revision Schedule <table border="1"> <tr> <th>REV</th> <th>DESCRIPTION</th> <th>BY</th> <th>DATE</th> <th>ECO</th> <th>CHK</th> </tr> <tr> <td> </td> <td> </td> <td> </td> <td> </td> <td> </td> <td> </td> </tr> </table> | REV | DESCRIPTION | BY | DATE | ECO | CHK | | | | | | |
| REV | DESCRIPTION | BY | DATE | ECO | CHK | | | | | | | | | | |
| | | | | | | | | | | | | | | | |
| DRIVING NO: GR140280021 | | TITLE: Driven-Stubshaft | REVISIONS: SHEET 1 OF 1 | | | | | | | | | | | | |

This drawing and all appurtenant matter contains information proprietary to PARKSON CORPORATION and is loaned subject to return upon demand and must not be reproduced, copied, loaned, revealed, nor used for any purpose other than that for which it is specifically furnished without expressed written consent of PARKSON CORPORATION.

NOTES:

- 1. REMOVE ALL BURRS AND SHARP EDGES: ROUND ALL CORNERS.
- 3. MATERIAL: CR1018



.125 x 45° CHAMFER
BOTH ENDS
DETAIL C
SCALE 0.48 : 1

R.50
DETAIL A
SCALE 0.48 : 1

| REV | DESCRIPTION | BY | DATE | ECO | CHK |
|-----|-------------|----|------|-----|-----|
| | | | | | |

| TOLERANCES | | DRAWN BY | |
|-------------------|--------------------|------------|-----------|
| 1-FIG DEC | EXCEPT WHERE NOTED | adilior | 11/5/2008 |
| 2-FIG DEC | 4.000 | CHECKED BY | DATE |
| ANGULAR | 4.00 | ENG | 1/22/2008 |
| MAX EDGE RAD | 4.17" | SCALE | WEIGHT |
| WELD SIZE | .13 | 4 | 5 |
| MACHINED SURFACES | 1/8 | ERI | SIZE |
| NO TO EXCEED | 150 | 6 | B |

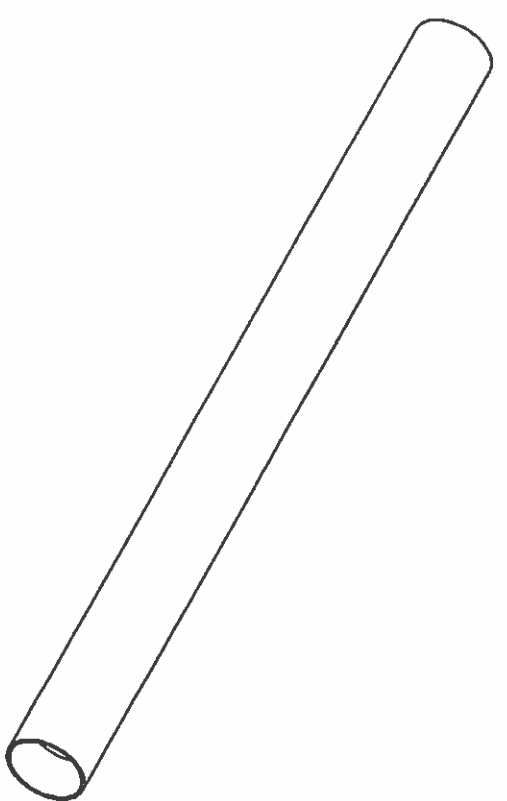
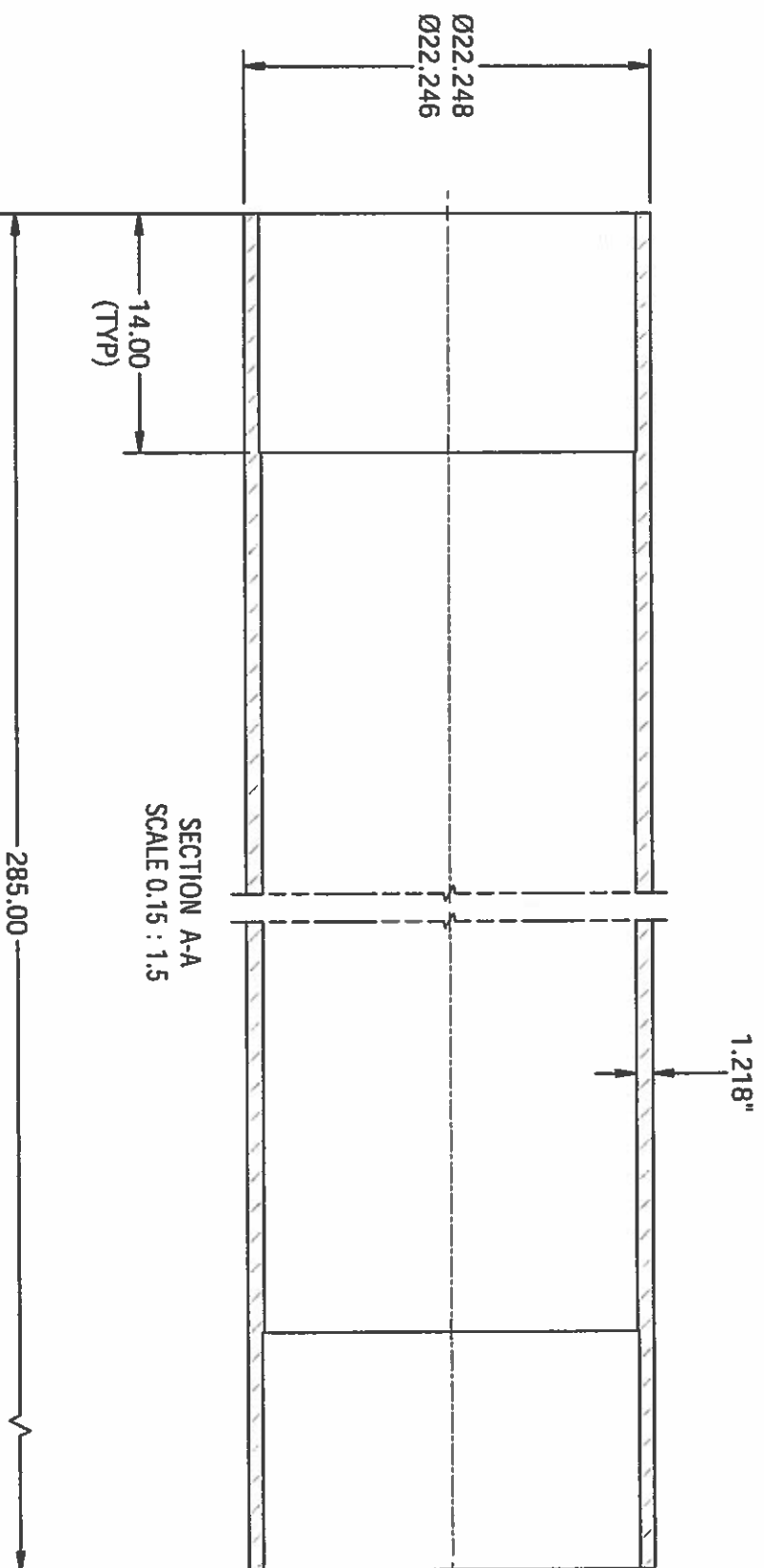
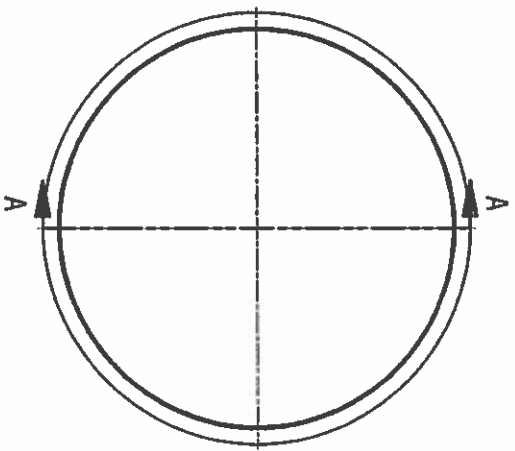


| | |
|--------------|----------------|
| TITLE | Idle-Stubshaft |
| DRAWING NO. | GR140280022 |
| SHEET 1 OF 1 | REV |

Handwritten signature and date:
3/12/09

NOTES:

1. REMOVE ALL BURRS AND SHARP EDGES: ROUND ALL CORNERS.
2. REMOVE ALL WELD SPATTER, SLAG AND DISCOLORATION.
3. MATERIAL A538 SCH 80



T. L. B. J.
3/12/09

| | | | | | |
|---|-------|---------------------------|-------------|--------------------------|-----------|
| TOLERANCES Except where noted | | DRAWN BY addfor | | DATE 11/5/2008 | |
| 3-FR DEC | ±.030 | CHECKED BY | ENG | DATE | 1/22/2008 |
| 2-FR DEC | ±.06 | SCALE | 4 | WEIGHT | 5 |
| ANGULAR | ±1/2° | ER | 6 | SIZE | 8 |
| MAX EDGE RAD | .13 | REVISION SCHEDULE | | | |
| WELD SIZE | 1/8 | REV | DESCRIPTION | BY | DATE |
| MACHINED SURFACES | 150 | | | | |
| NOT TO EXCEED | | | | | |

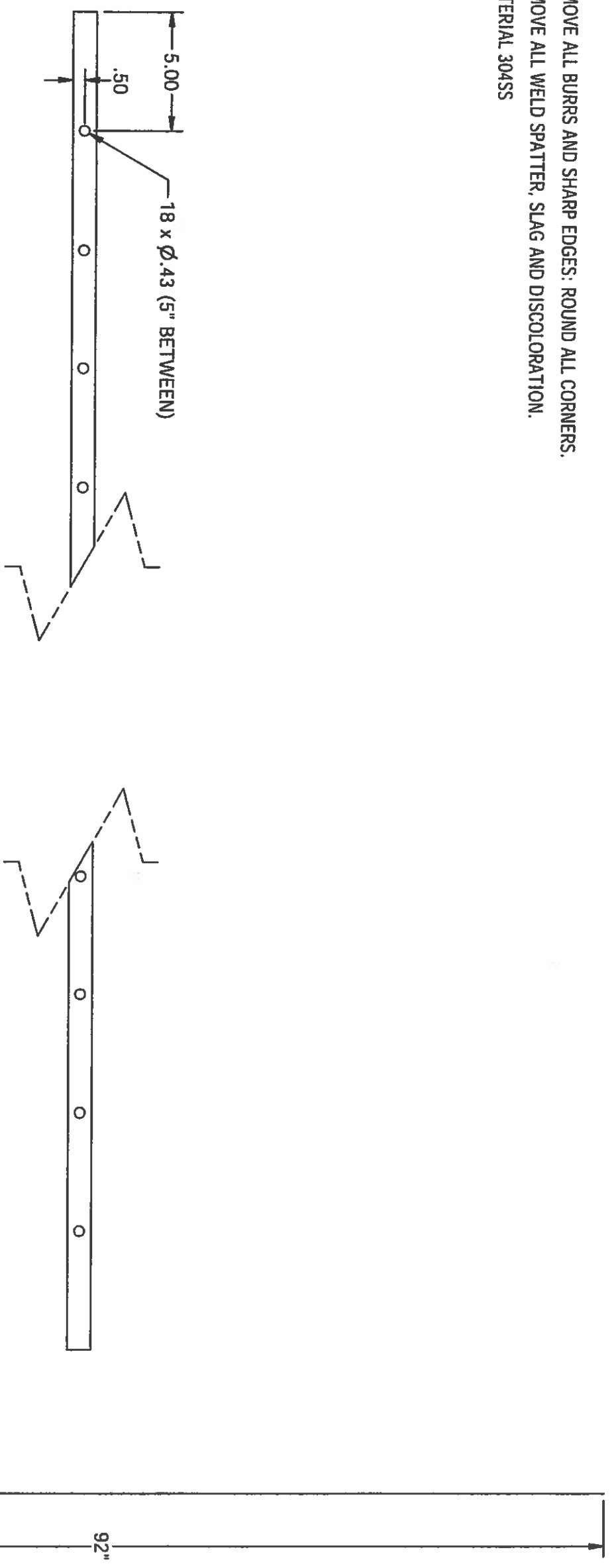


Shaft (SCH60 24" DIA)

GR140280023

NOTES:

1. REMOVE ALL BURRS AND SHARP EDGES: ROUND ALL CORNERS.
2. REMOVE ALL WELD SPATTER, SLAG AND DISCOLORATION.
3. MATERIAL 304SS



*Ken B...
3/12/09*

| TOLERANCES | | DRAWN BY | | DATE | |
|--------------------|-------|---------------|-----|-----------|-----------|
| Except where noted | | edoflor | | 11/5/2008 | |
| 3-FIN DEC | ±.030 | CHECKED BY | ENG | DATE | 1/22/2008 |
| 2-FIN DEC | ±.06 | SCALE | 4 | WEIGHT | 5 |
| ANGULAR | ±1/2° | ER: | 6 | SIZE | B |
| MAX EDGE RAD | .13 | NOT TO EXCEED | | | |
| WELD SIZE | 1/8 | 150 | | | |
| MACHINED SURFACES | 150 | | | | |

| REV | DESCRIPTION | BY | DATE | ECO | CHK |
|-----|-------------|----|------|-----|-----|
| | | | | | |

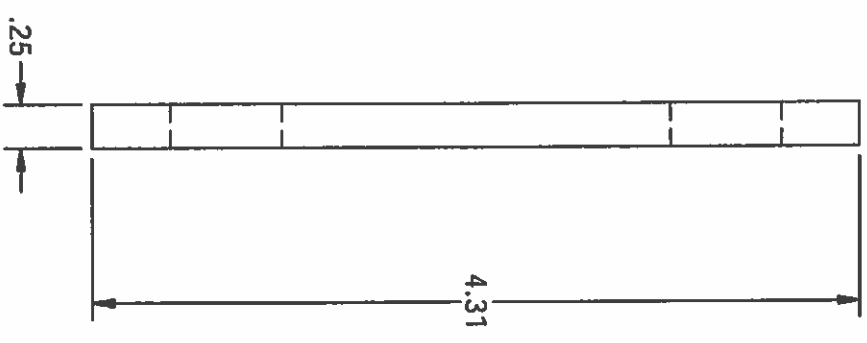
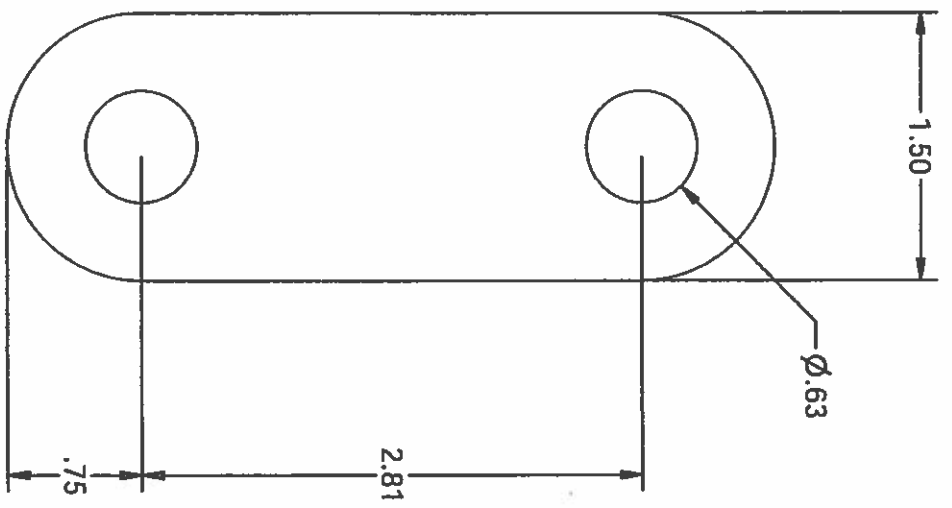
| | |
|-------------------|--|
| REVISION SCHEDULE | |
| | |

| | | | |
|-----------------------|--|--------------|--|
| TITLE | | DRAWING NO. | |
| 1 X 1/8 X 92 FLAT BAR | | GR140280028 | |
| PARKSON | | SHEET 1 OF 1 | |

This drawing and all appurtenant matter contains information proprietary to PARKSON CORPORATION and is loaned subject to return upon demand and must not be reproduced, copied, loaned, revealed, nor used for any purpose other than that for which it is specifically furnished without expressed written consent of PARKSON CORPORATION.

NOTES:

1. REMOVE ALL BURRS AND SHARP EDGES: ROUND ALL CORNERS.
2. REMOVE ALL WELD SPATTER, SLAG AND DISCOLORATION.
3. MATERIAL 304SS



T. Campbell SA
3/12/09

| REV | DESCRIPTION | BY | DATE | ECO | CHK |
|-----|-------------|----|------|-----|-----|
| | | | | | |

| TOLERANCES | | DRAWN BY | |
|--------------------|-------|----------|------------|
| Except where noted | | and/or | DATE |
| 1-FIG DEC | 4.000 | ER | 11/10/2008 |
| 2-FIG DEC | 4.05 | ENG | 1/22/2008 |
| ANGULAR | 4.12° | SCALE | 4 |
| MAX EDGE RAD | .13 | WEIGHT | 5 |
| WELD SIZE | 1/8 | ER | 6 |
| MACHINED SURFACES | 100 | SIZE | B |

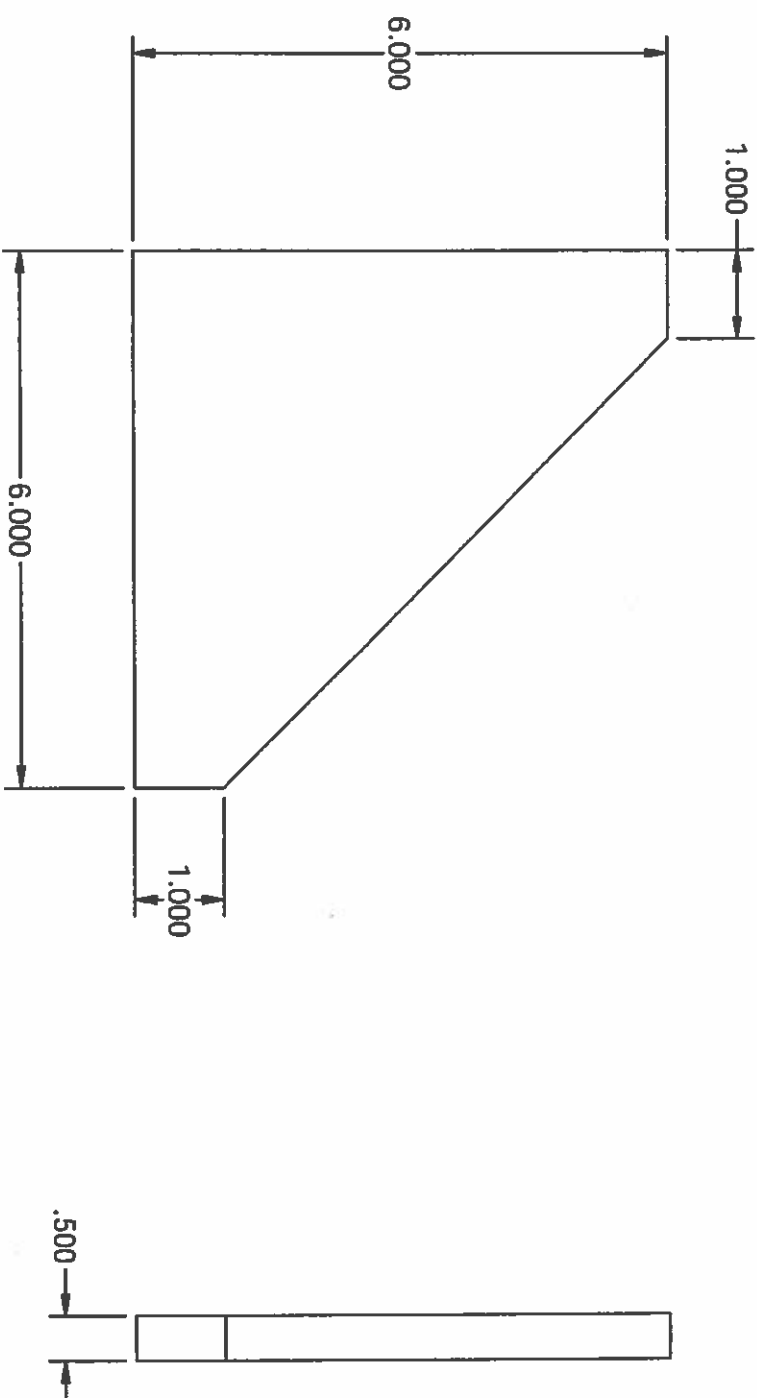


| | |
|-------------|----------------------|
| TITLE | MESH CLOSING BRACKET |
| DRAWING NO: | GR140280029 |
| REV | |

This drawing and all appurtenant matter contains information proprietary to PARKSON CORPORATION and is loaned subject to return upon demand and must not be reproduced, copied, loaned, revealed, nor used for any purpose other than that for which it is specifically furnished without expressed written consent of PARKSON CORPORATION.

NOTES:

1. REMOVE ALL BURRS AND SHARP EDGES: ROUND ALL CORNERS.
2. REMOVE ALL WELD SPATTER, SLAG AND DISCOLORATION.
3. MATERIAL : A36



| REV | DESCRIPTION | BY | DATE | ECO | CHK |
|-----|-------------|----|------|-----|-----|
| | | | | | |

| TOLERANCES | | DRAWN BY | | DATE | |
|--------------------|-------|-------------------|-----|----------|-----------|
| Except where noted | | rajrup | | 6/9/2008 | |
| 3-FIG DEC | ±.030 | CHECKED BY | ENG | DATE | 1/22/2008 |
| 2-FIG DEC | ±.06 | SCALE | 1/2 | WEIGHT | |
| ANGULAR | ±.12° | WELD SIZE | 1/8 | | |
| MAX EDGE RAO | .13 | MACHINED SURFACES | 150 | | |

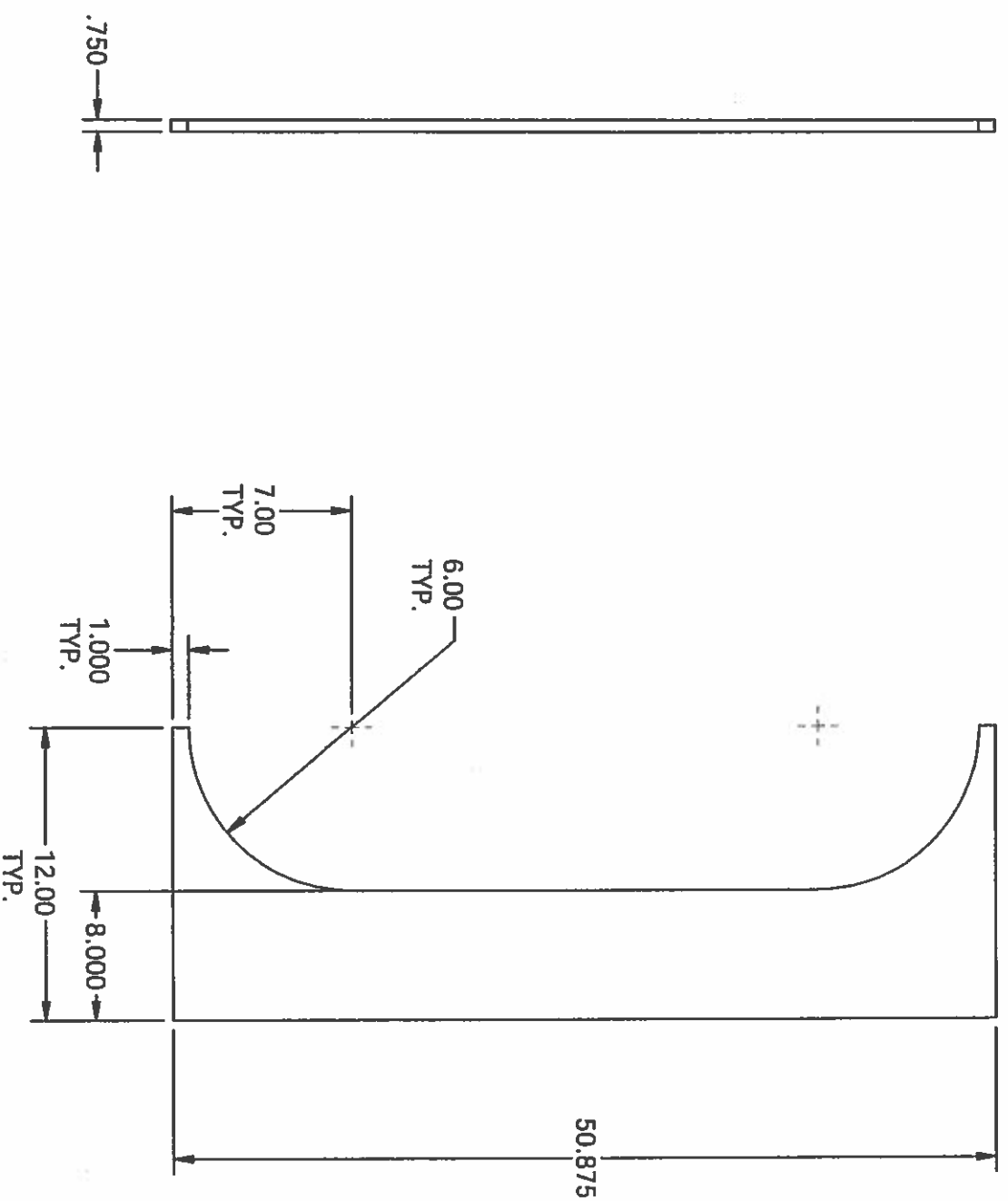


| TITLE | DRAWING NO. | REV |
|------------------|-------------|-----|
| GUSSET STUBSHAFT | GR140280031 | |

Handwritten signature and date:
 3/12/09

NOTES:

1. REMOVE ALL BURRS AND SHARP EDGES: ROUND ALL CORNERS.
2. REMOVE ALL WELD SPATTER, SLAG AND DISCOLORATION.
3. MATERIAL : A36



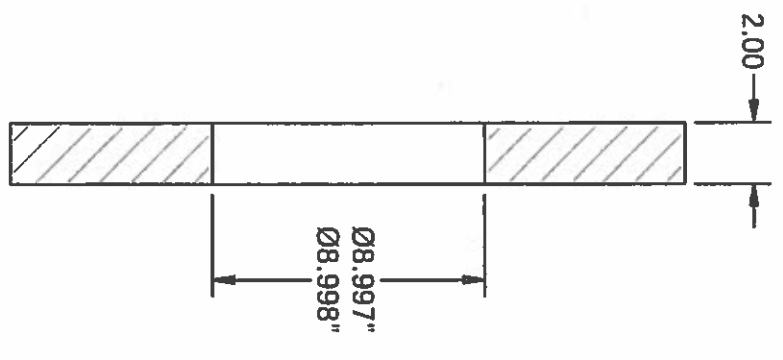
T. C. B. / SA
3/12/09

| | | | | | |
|--|--|--------------------------------|-------------------|-----------------|----------------|
| TOLERANCES Except where noted 3-FIG DEC 3.000 2-FIG DEC 4.06 ANGULAR 4.17° MAX EDGE RAD .13 WELD SIZE 1/8 MACHINED SURFACES 150 ✓ NOT TO EXCEED 8 | | DRAWN BY RAGHU 5/23/2008 | DATE 5/23/2008 | Parikson | TITLE SPOKE |
| REVISION SCHEDULE REV DESCRIPTION BY DATE ECO CHK | | CHECKED BY ENG 1/22/2008 | SCALE 1:10 | | |

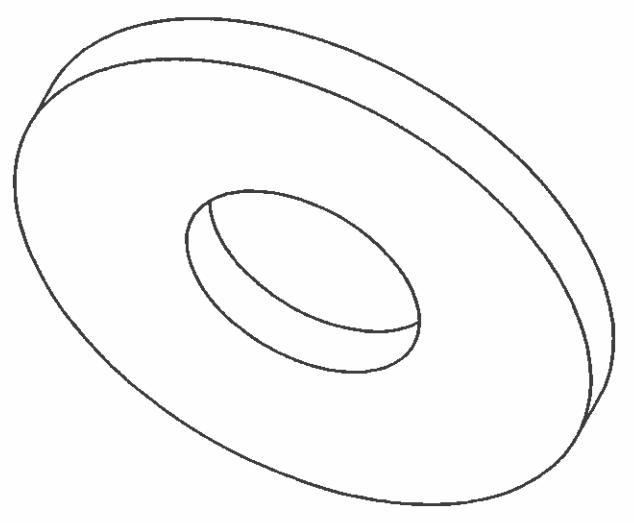
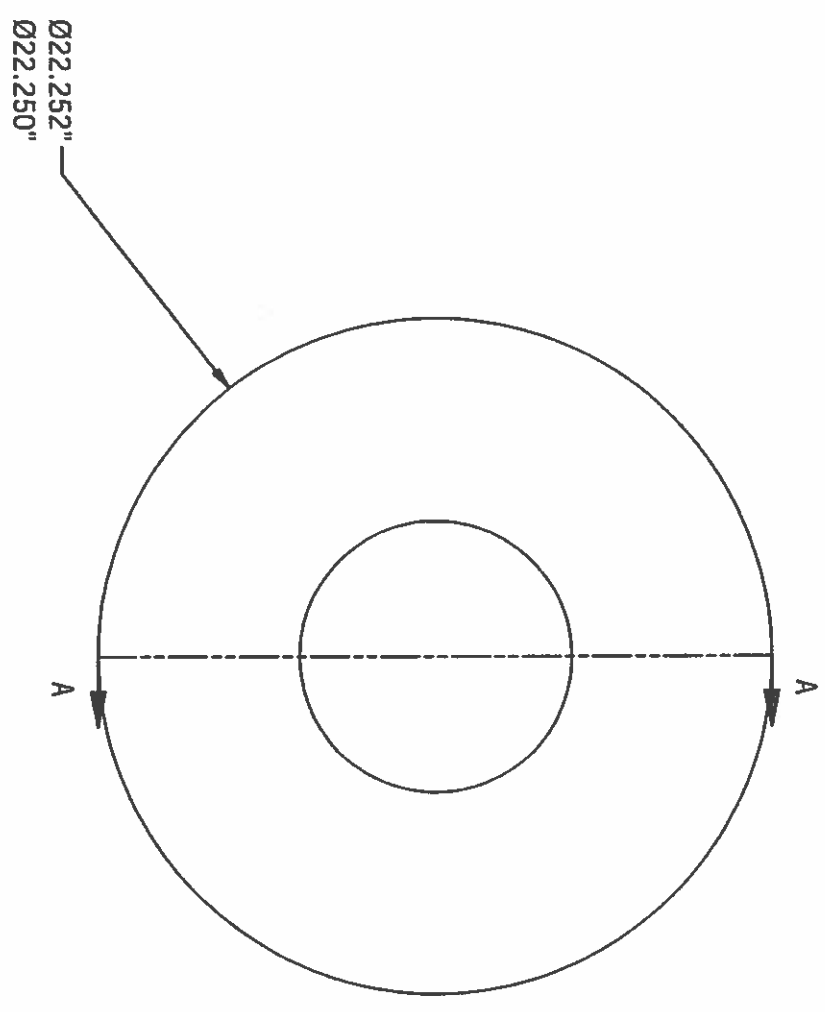
This drawing and all appurtenant matter contains information proprietary to PARKSON CORPORATION and is loaned subject to return upon demand and must not be reproduced, copied, loaned, revealed, nor used for any purpose other than that for which it is specifically furnished without expressed written consent of PARKSON CORPORATION.

NOTES:

1. REMOVE ALL BURRS AND SHARP EDGES: ROUND ALL CORNERS.
2. MATERIAL A36



SECTION A-A
SCALE 0.17 : 1



| REV | DESCRIPTION | BY | DATE | ECO | CHK |
|-----|-------------|----|------|-----|-----|
| | | | | | |

REVISION SCHEDULE

| | | | |
|-------------------|-------|------------|-----------|
| 1-FIG DEC | 3.030 | DRAWN BY | DATE |
| 2-FIG DEC | 3.06 | ad/lor | 11/5/2008 |
| ANGULAR | 3.12° | CHECKED BY | DATE |
| MAX EDGE RAD | .13 | ENG | 1/22/2008 |
| WELD SIZE | 1/8 | SCALE | 4 |
| MACHINED SURFACES | 150 | ER: | 5 |
| NOT TO EXCEED | 6 | SIZE | 8 |



| | |
|-------------|--------------------|
| TITLE | Shaft-Inner-Spacer |
| DRAWING NO. | GR140280050 |
| REV | |

Handwritten signature: J. C. B. B. R. 3/12/09

This drawing and all appurtenant matter contains information proprietary to PARKSON CORPORATION and is loaned subject to return upon demand and must not be reproduced, copied, loaned, revealed, nor used for any purpose other than that for which it is specifically furnished without expressed written consent of PARKSON CORPORATION.