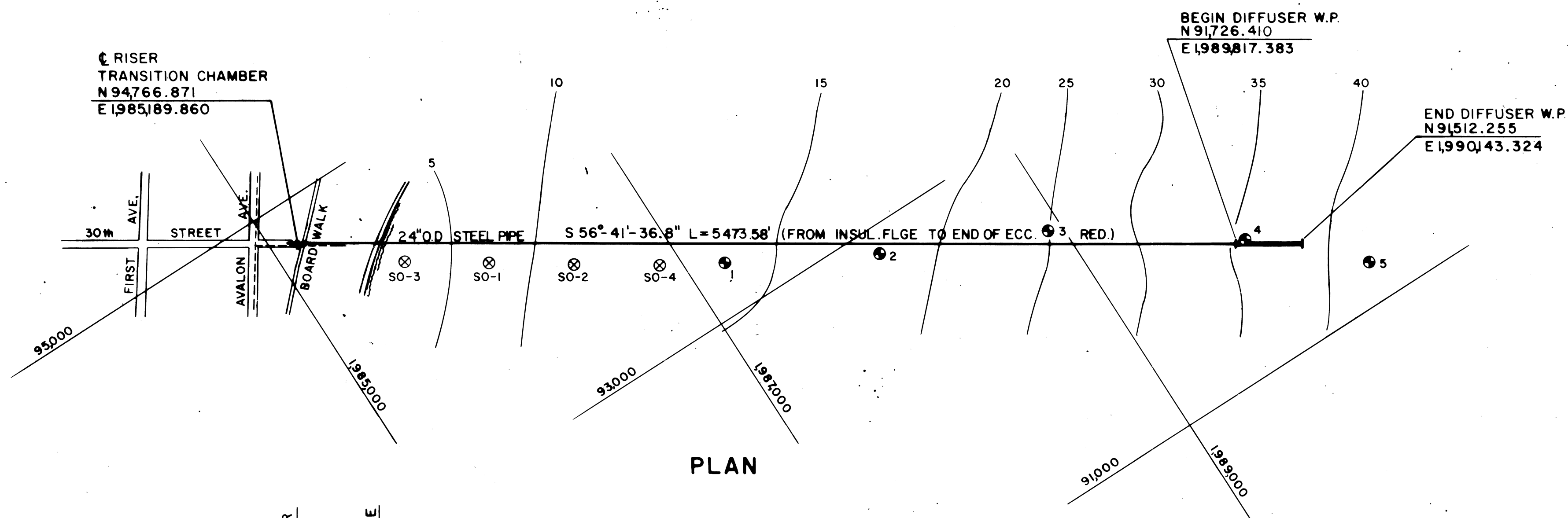
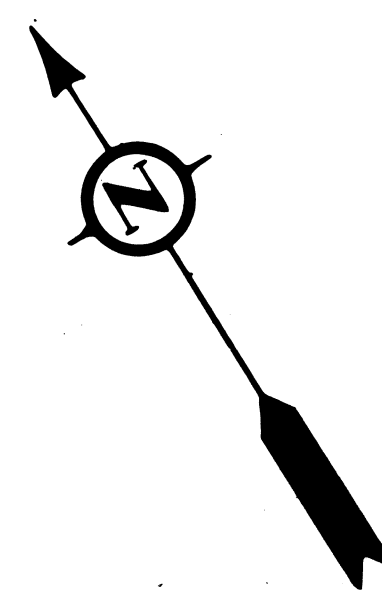
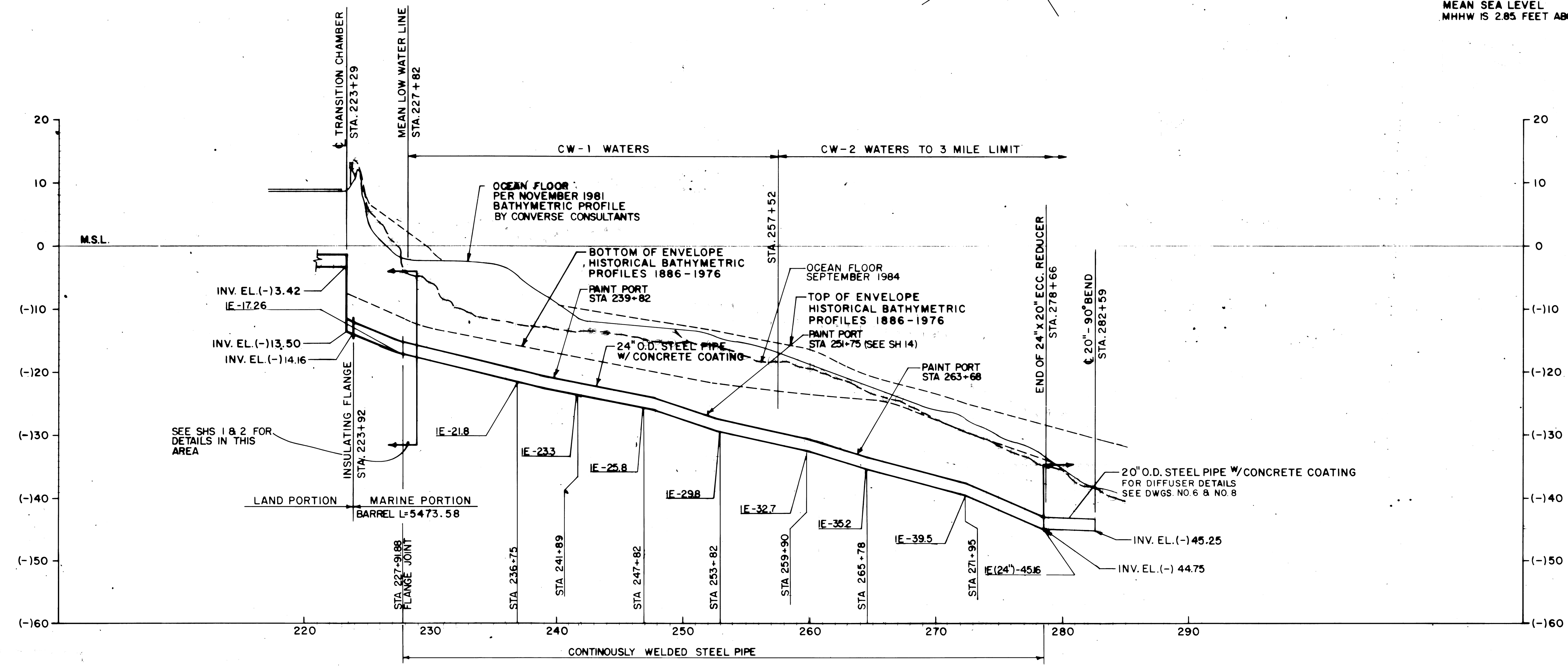


REVISIONS				
DATE	DW'N	CHK'D	APPY'D	DESCRIPTION
4/1/89	DW	PH		MISC. REVISIONS
4/1/89	KAK	WE	VWR	RECORD DRAWING



PLAN

DATUM:
M.S.L. (1929) = 0.00 N.G.V.D.
M.L.W. IS 1.73 FEET BELOW M.S.L. (1929)
ALL CONTOUR ELEVATIONS ARE BELOW
MEAN SEA LEVEL
MHHW IS 2.85 FEET ABOVE MSL (1929)

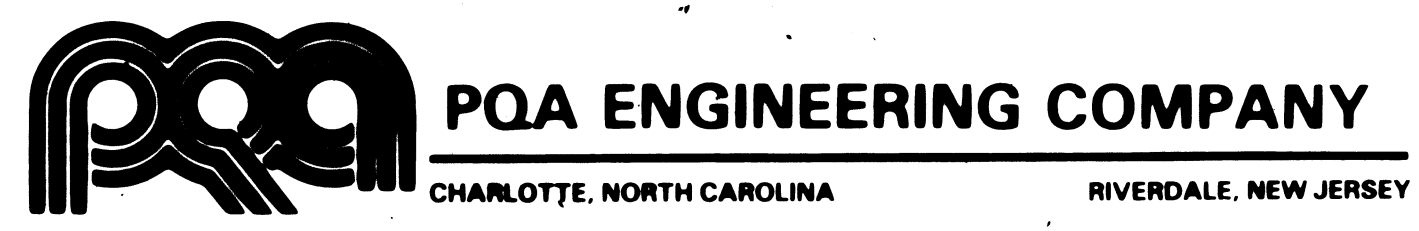


PROFILE



RECORD DRAWINGS

Revisions Drawn by M.A. DUNLEY Date 17 JULY 1986
THESE RECORD DRAWINGS HAVE BEEN PREPARED, IN PART, ON THE BASIS OF INFORMATION COMPILED BY OTHERS. THEY ARE NOT INTENDED TO REPRESENT IN DETAIL THE EXACT LOCATION, TYPE OF COMPONENT NOR MANNER OF CONSTRUCTION. THE ENGINEER WILL NOT BE RESPONSIBLE FOR ANY ERRORS OR OMISSIONS WHICH HAVE BEEN INCORPORATED INTO THE RECORD DRAWINGS.



DESIGNED		APPROVALS	
W.B.P.		PROJ. MGR.	<i>DDK</i>
N.V.		PROJ. ENGR.	<i>PH</i>
A.O.B.			

Francis Pandullo
FRANCIS PANDULLO
PROFESSIONAL ENGINEER
N.J. LIC. NO. 11626 DATE

CAPE MAY COUNTY MUNICIPAL UTILITIES AUTHORITY
CAPE MAY COUNTY NEW JERSEY
SEVEN MILE BEACH / MIDDLE REGION
OCEAN OUTFALL - CONTRACT NO. S.M.-00-1

MARINE PORTION
PLAN AND PROFILE
STA. 223+92.42 TO STA. 282+59
24" O.D. STEEL PIPE

PROJECT NO. 61736
SCALE: AS SHOWN
DWG. 3
SHEET 3 OF 16