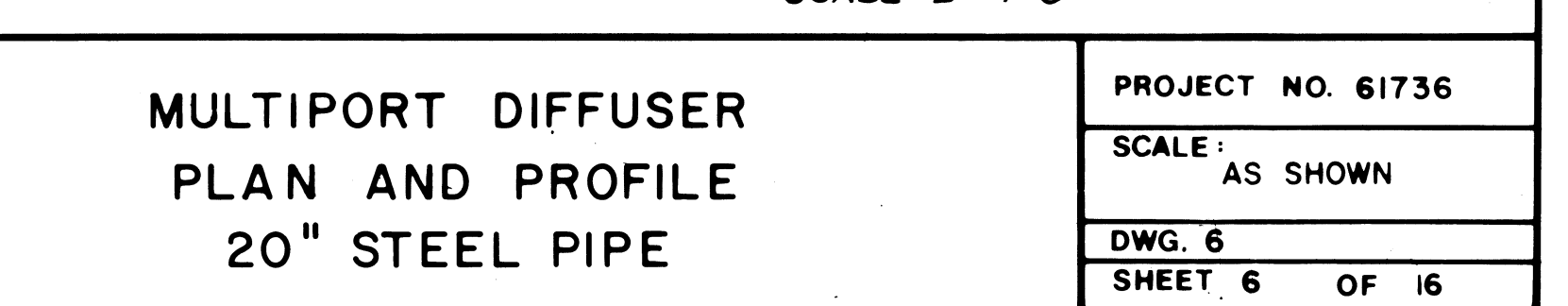
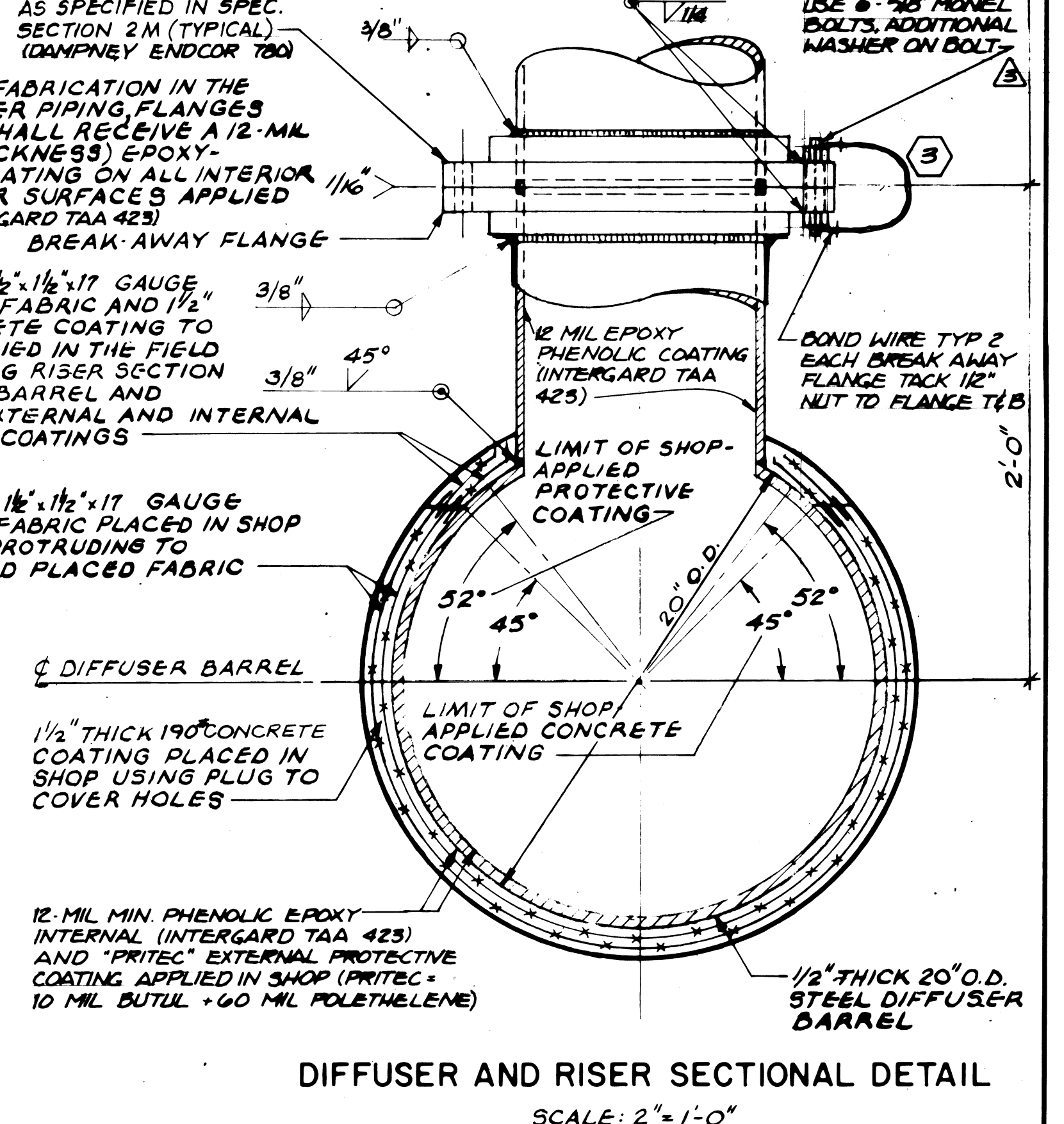
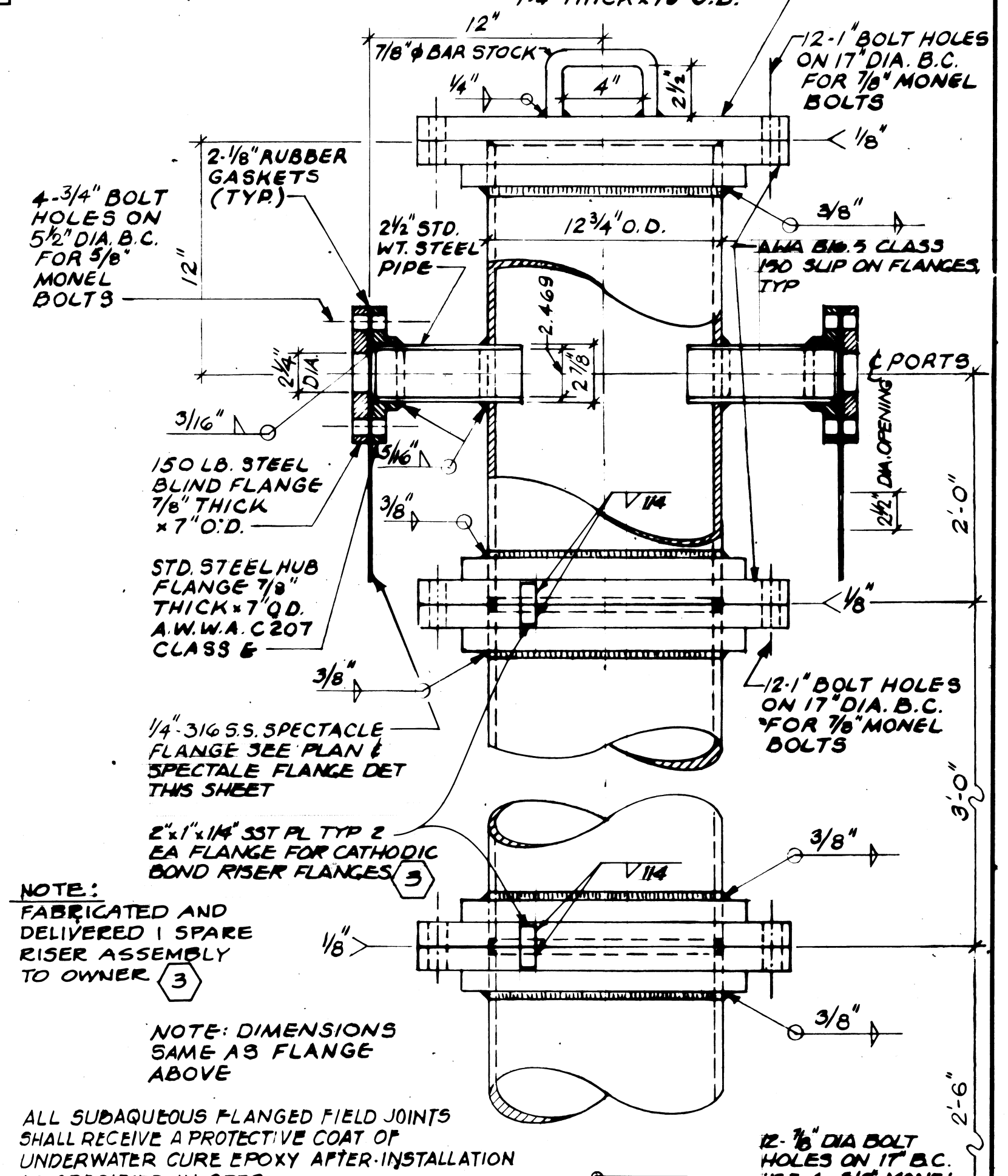
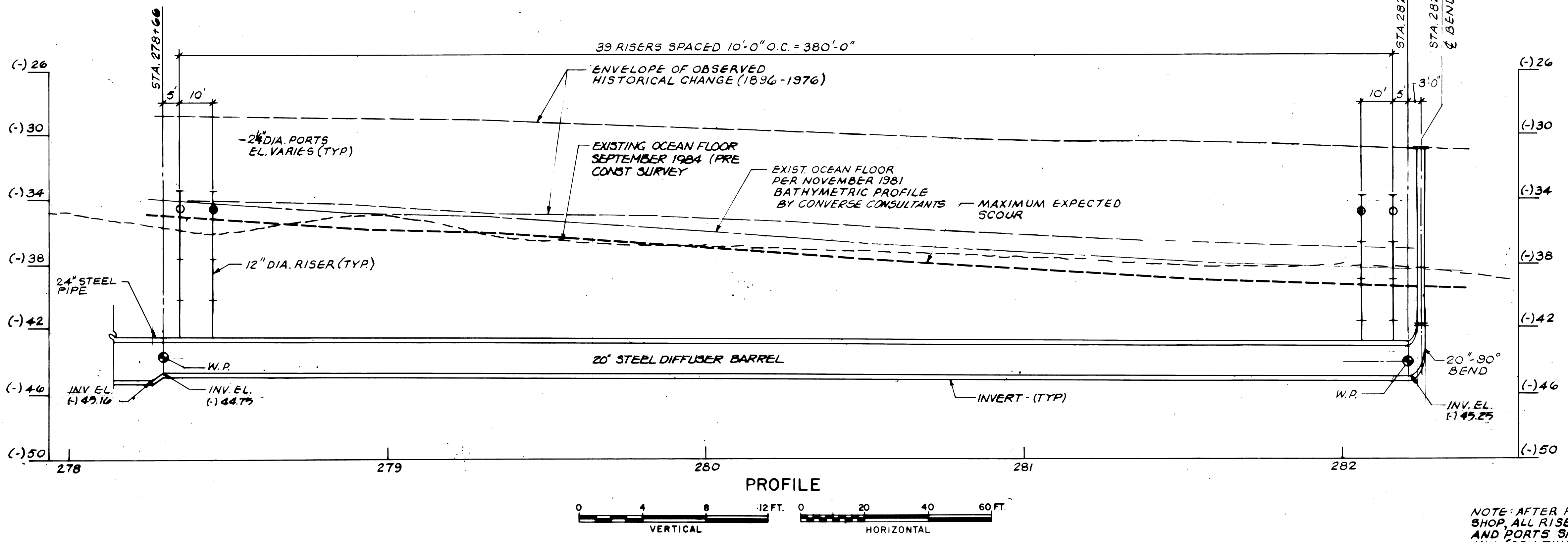
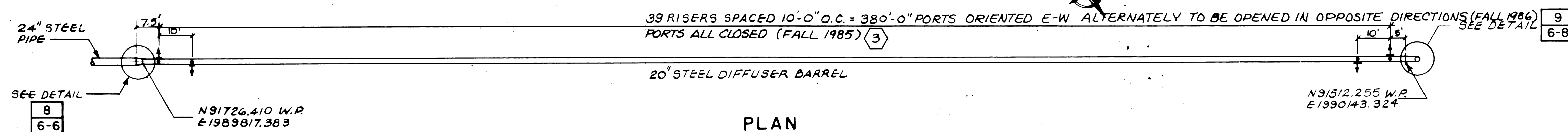


REVISIONS				
DATE	DW'N	CHK'D	APP'VD	DESCRIPTION
8/1/83	DW	PH		ADDED SPECTACLE FLANGE DETAIL & MISC. REVISIONS.
7/2/84	GPD	YWR		ADDED (3) NON-WELDED JOINT BOND - SPARE RISER, CLOSED
7/22/84	WE	VWR		COA EXTRA MONEL WASHER COATS



RECORD DRAWINGS

These record drawings have been prepared, in part, on the basis of information compiled by others. They are not intended to represent in detail the exact location, type of component nor manner of construction. The engineer will not be responsible for any errors or omissions which have been incorporated into the record drawings.

NOTE: AFTER FABRICATION IN THE SHOP, ALL RISER PIPING, FLANGES AND PORTS SHALL RECEIVE A 12-MIL MIN. (DRY THICKNESS) EPOXY-PHENOLIC COATING ON ALL INTERIOR AND EXTERIOR SURFACES APPLIED IN SHOP (INTERGARD TAA 423) BREAK-AWAY FLANGE

2 LAYERS OF 1/2\"/>

2 LAYERS OF 1/2\"/>

12-MIL MIN. PHENOLIC EPOXY INTERNAL (INTERGARD TAA 423) AND 'PRITEC' EXTERNAL PROTECTIVE COATING APPLIED IN SHOP (PRITEC - 10 MIL BUTYL + 60 MIL POLETHYLENE)

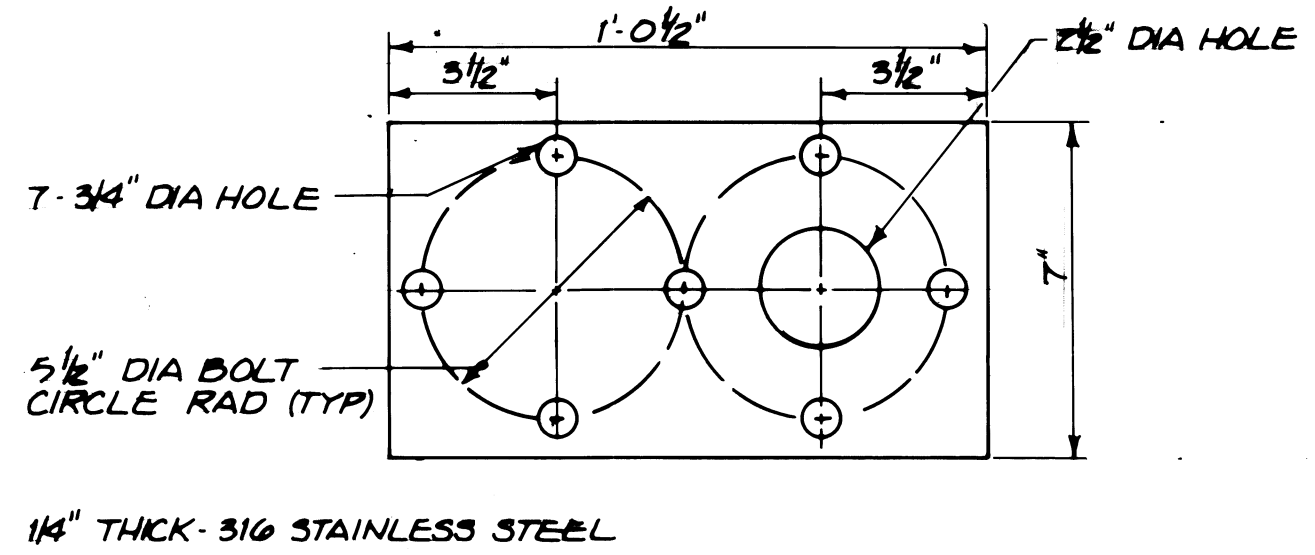
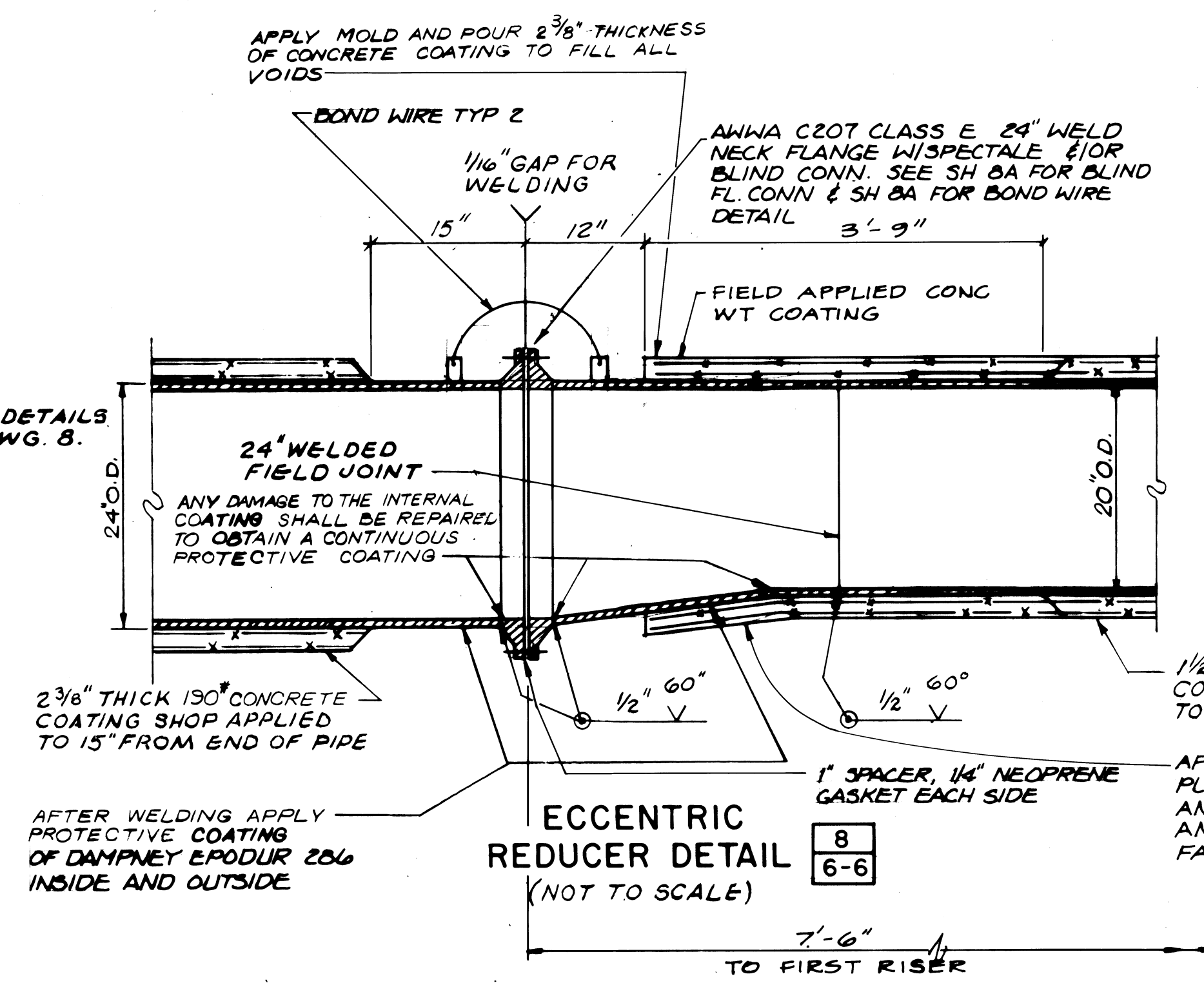
NOTE: DIMENSIONS SAME AS FLANGE ABOVE

NOTE: FABRICATED AND DELIVERED 1 SPARE RISER ASSEMBLY TO OWNER

ALL SUBAQUEOUS FLANGED FIELD JOINTS SHALL RECEIVE A PROTECTIVE COAT OF UNDERWATER CURE EPOXY AFTER INSTALLATION AS SPECIFIED IN SPEC. SECTION 2M (TYPICAL) (DAMPNEY ENDOR 780)

NOTE: DIMENSIONS SAME AS FLANGE ABOVE

NOTE: FOR ADDITIONAL DETAILS & NOTES, SEE DWG. 8.



NOTE: AFTER FABRICATION IN THE SHOP, ALL RISER PIPING, FLANGES AND PORTS SHALL RECEIVE A 12-MIL MIN. (DRY THICKNESS) EPOXY-PHENOLIC COATING ON ALL INTERIOR AND EXTERIOR SURFACES APPLIED IN SHOP (INTERGARD TAA 423) BREAK-AWAY FLANGE

2 LAYERS OF 1/2\"/>

2 LAYERS OF 1/2\"/>

12-MIL MIN. PHENOLIC EPOXY INTERNAL (INTERGARD TAA 423) AND 'PRITEC' EXTERNAL PROTECTIVE COATING APPLIED IN SHOP (PRITEC - 10 MIL BUTYL + 60 MIL POLETHYLENE)

NOTE: DIMENSIONS SAME AS FLANGE ABOVE

NOTE: FABRICATED AND DELIVERED 1 SPARE RISER ASSEMBLY TO OWNER

ALL SUBAQUEOUS FLANGED FIELD JOINTS SHALL RECEIVE A PROTECTIVE COAT OF UNDERWATER CURE EPOXY AFTER INSTALLATION AS SPECIFIED IN SPEC. SECTION 2M (TYPICAL) (DAMPNEY ENDOR 780)

NOTE: DIMENSIONS SAME AS FLANGE ABOVE

PQA ENGINEERING COMPANY
 CHARLOTTE, NORTH CAROLINA RIVERDALE, NEW JERSEY

DESIGNED		A.O.B.	
DRAWN	D.D.	PROJ. MGR.	DDK
CHECKED	W.P.B.	PROJ. ENGR.	PH

Francis Pandullo
 PROFESSIONAL ENGINEER
 N.J. LIC. NO. 11626 DATE

CAPE MAY COUNTY MUNICIPAL UTILITIES AUTHORITY
 CAPE MAY COUNTY NEW JERSEY
 SEVEN MILE BEACH / MIDDLE REGION
 OCEAN OUTFALL - CONTRACT NO. S.M.-O.O.-1

MULTIPORT DIFFUSER
 PLAN AND PROFILE
 20" STEEL PIPE

PROJECT NO. 61736
SCALE: AS SHOWN
DWG. 6
SHEET 6 OF 16