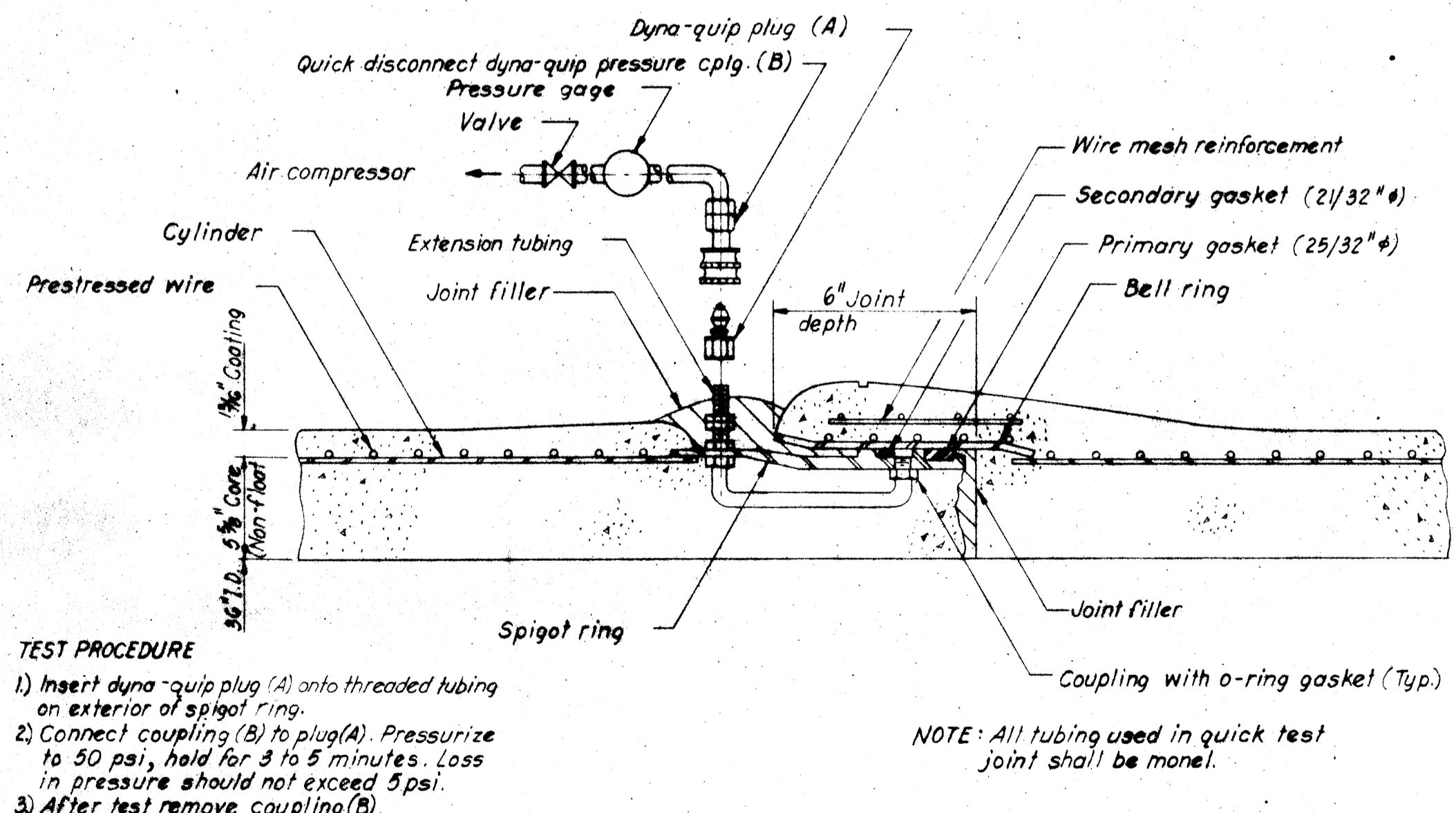
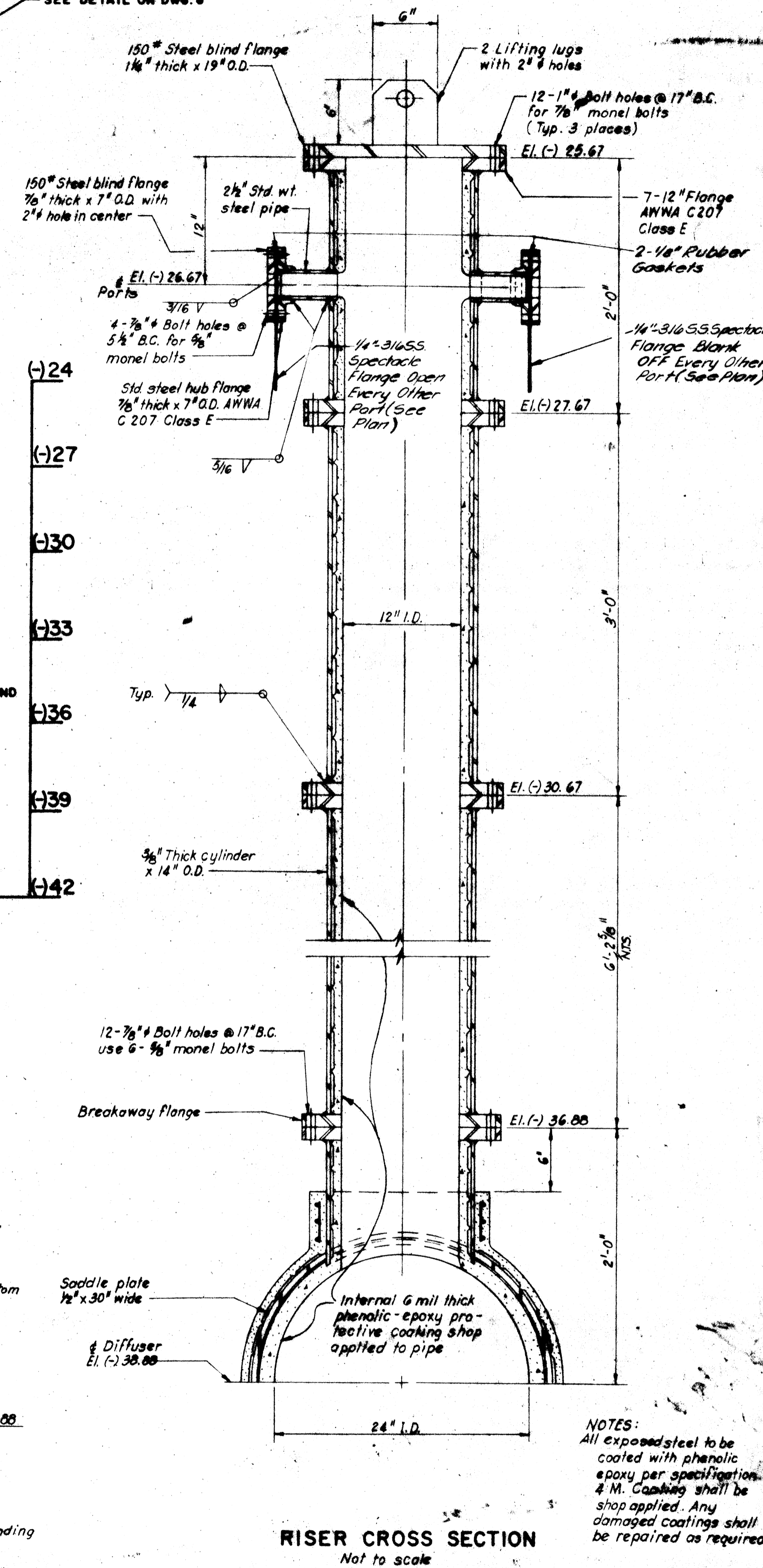
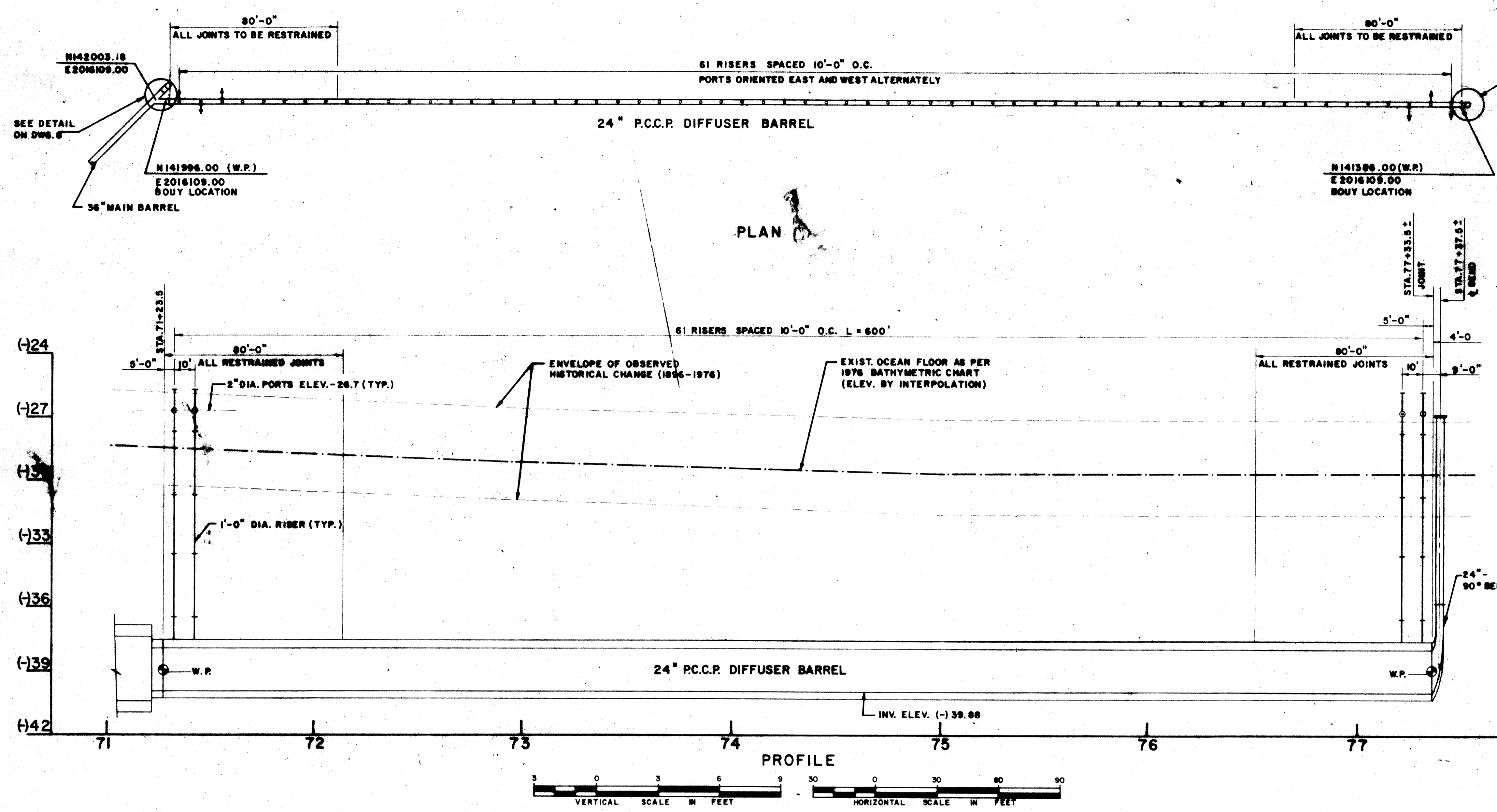


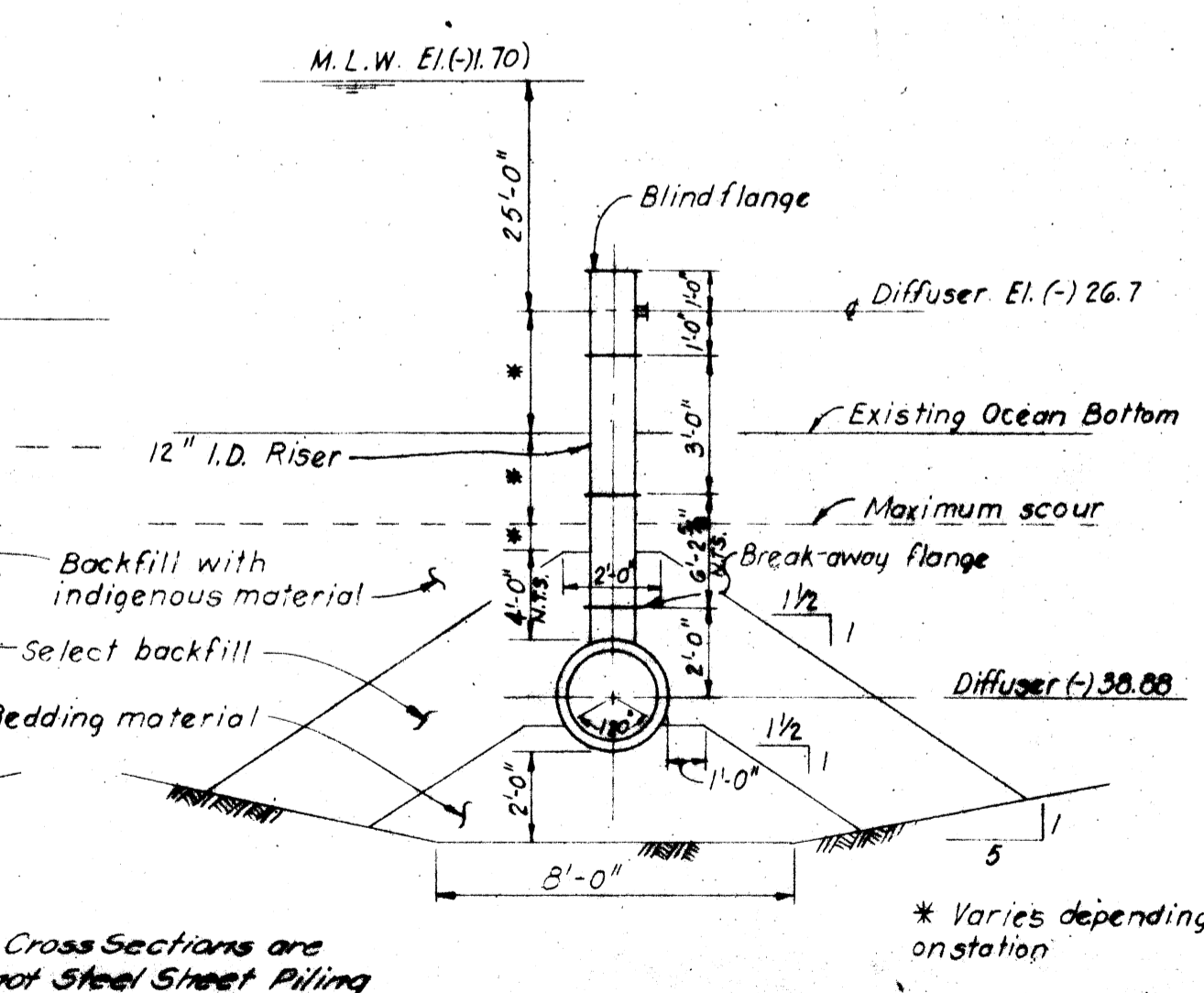
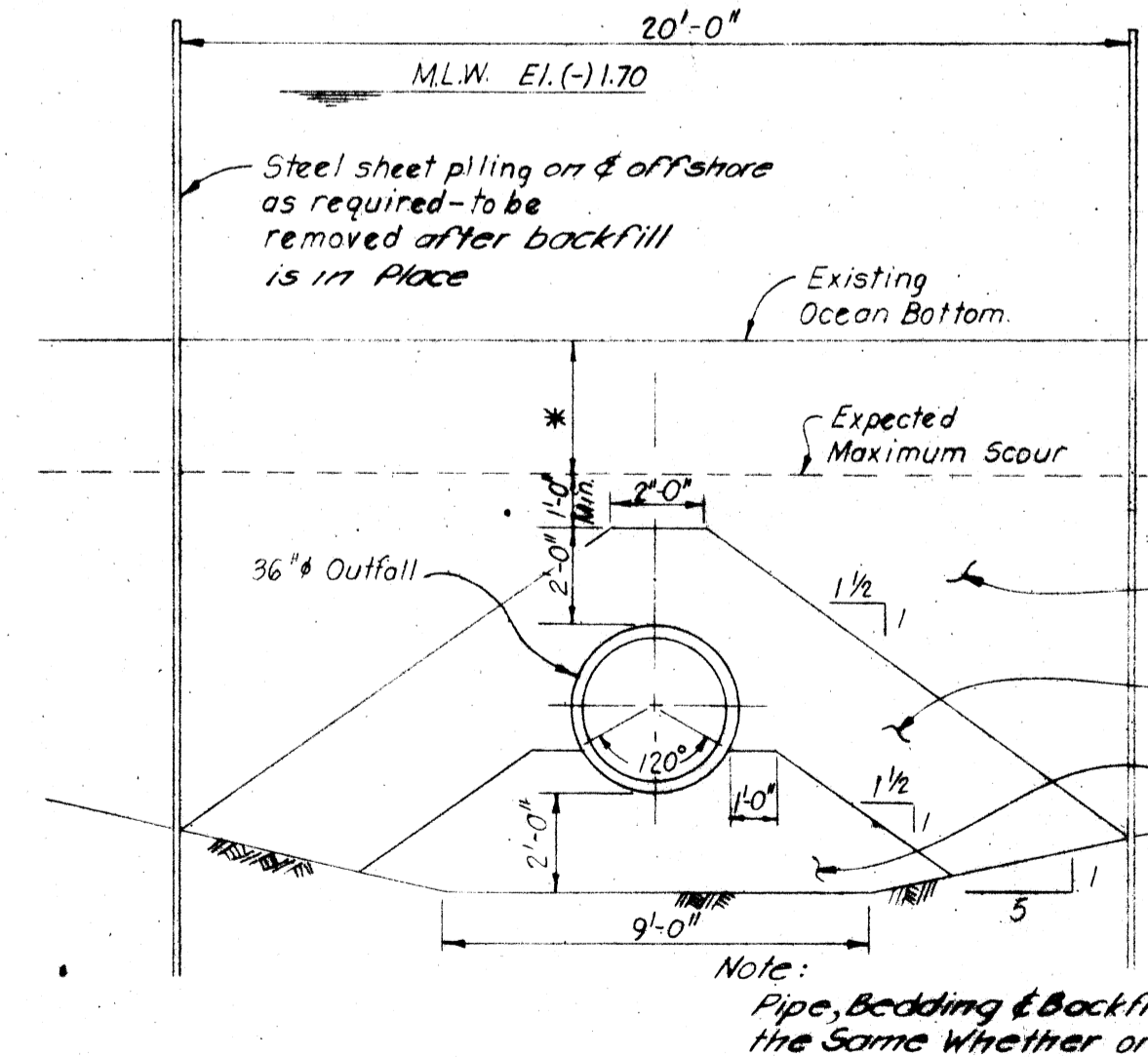
REVISIONS				
DATE	BY	CHK'D	APP'VD	DESCRIPTION



TEST PROCEDURE

- 1) Insert dyna-quip plug (A) onto threaded tubing on exterior of spigot ring.
- 2) Connect coupling (B) to plug (A). Pressurize to 50 psi, hold for 3 to 5 minutes. Loss in pressure should not exceed 5 psi.
- 3) After test remove coupling (B).

NOTE: All tubing used in quick test joint shall be monel.



NOTE: Pipe, Bedding & Backfill Cross Sections are the Same Whether or not Steel Sheet Piling is used.

* Varies depending on station

NOTES:
All exposed steel to be coated with phenolic epoxy per specification. 4 M. Coating shall be shop applied. Any damaged coatings shall be repaired as required.

MODIFICATIONS AS RECORDED DURING CONSTRUCTION
RECORD DRAWING
BY P.Q.A.

PANDULLO QUIRK ASSOCIATES Science Engineering Design	DESIGNED <i>HS</i>	APPROVALS	CAPE MAY COUNTY MUNICIPAL UTILITIES AUTHORITY CAPE MAY COUNTY OCEAN CITY REGION OCEAN OUTFALL - CONTRACT NO. O.C.-O.O.-1-G	PROJECT NO. 61430 SCALE: AS SHOWN DWG. 6 OF 14 SHEET OF
	DRAWN <i>SS</i>	PROJ. MGR. <i>WJK</i>		
	CHECKED <i>HS</i>	PROJ. ENGR. <i>PJT</i>		
		CHIEF DRAFTSMAN <i>CA</i>		
		WILLIAM J. KELLY PROFESSIONAL ENGINEER N.J. LIC. NO. 13874 DATE 5-3-79		