

SHEET NOTES

- 1 REFER TO THE FOLLOWING NOTES FOR EACH HHP.
 - CONTRACTOR SHALL INSTALL A SAFETY DRAIN PAN UNDER THE UNIT AND THE CONDENSATE PUMP (IF REQUIRED). THE PAN SHALL BE 26 GA GALVANIZED SHEET METAL SOLID CORNERS, SEAL ALL SEAMS. THE PAN SHALL BE A MINIMUM OF 2" HIGH AND A MINIMUM OF 2" FROM THE EQUIPMENT. PROVIDE A WATER SENSING SWITCH LOCATED IN THE PAN. THE SWITCH SHALL DEENERGIZE THE SYSTEM AND SIGNAL ALARM SHOULD WATER BE SENSED.
 - CONTRACTOR SHALL PROVIDE OUTSIDE AIR CONNECTION TO MAIN OUTSIDE AIR DUCT FROM RTU-1. 60 CFM/TON OF OUTSIDE AIR SHALL BE SUPPLIED TO EACH HHP (120 CFM, 8"Ø FOR 2-TON UNITS, 180 CFM, 9"Ø FOR 3-TON UNITS, 240 CFM, 10"Ø FOR 4-TON UNITS).
 - ENSURE THAT ALL MANUFACTURERS REQUIRED MAINTENANCE CLEARANCES ARE MET. REFER TO DETAILS 538 HWS-2 FOR FURTHER INFORMATION.
- 2 CONTRACTOR SHALL PROVIDE 18x12 TRANSFER AIR LOUVER, HIGH ABOVE CLOSET DOOR.
- 3 EXTEND REFRIGERANT PIPING FROM INDOOR UNIT TO CORRESPONDING OUTDOOR UNIT. SIZE REFRIGERANT PIPING PER MANUFACTURERS RECOMMENDATIONS. COORDINATE ALL PIPING RUNS WITH ARCHITECT. CONTRACTOR SHALL GUARANTEE THAT THE REFRIGERANT LINES DO NOT EXCEED THE RECOMMENDED MAXIMUM LENGTH OF REFRIGERANT PIPING. COORDINATE LOCATION OF UNIT W/ ARCHITECT AND BUILDING OWNER PRIOR TO INSTALLATION.
- 4 CONTRACTOR SHALL PROVIDE REVERSE ACTING THERMOSTAT SET TO 85°F (ADJ.) FOR INDICATED EXHAUST FAN. COORDINATE EXACT LOCATION AND MOUNTING HEIGHT OF THERMOSTAT W/ ARCHITECT.
- 5 CONTRACTOR SHALL PROVIDE A 18"Ø LINEAR BAR SUPPLY GRILLE IN THE FACE OF WALL. KRUEGER MODEL DFL OR EQUAL WITH BLANK OFF PANELS FOR INACTIVE SECTIONS AS REQUIRED. 75 CFM/FIT, 1200 CFM TOTAL. BORDER, COLOR AND FINISH SHALL BE COORDINATED WITH ARCHITECT. PROVIDE INSULATED PLENUM BOX ON THE BACK OF THE GRILLE. CONTRACTOR SHALL PROVIDE ALL REQUIRED INTERNAL BRACING PER SMACNA STANDARDS (TYP.).
- 6 CONTRACTOR SHALL PROVIDE 3"Ø VENTAIR INTAKE TERMINAL FROM GAS-FIRED WATER HEATER. VENTAIR INTAKE PIPING SHALL TERMINATE THROUGH WALL. COORDINATE ALL WALL PENETRATIONS WITH ARCHITECT PRIOR TO INSTALLATION. INSTALL PER MANUFACTURERS RECOMMENDATIONS.
- 7 INDICATES LOCATION OF SEVEN-DAY ELECTRONIC PROGRAMMABLE THERMOSTAT. PROVIDE NON-TAMPER TRANSPARENT ENCLOSURE FOR THERMOSTAT. COORDINATE ENCLOSURE AND FINAL LOCATION OF THERMOSTAT WITH ARCHITECT AND OWNER.
- 8 6"Ø EXHAUST AIR DUCT SHALL TERMINATE THROUGH WALL WITH MANUFACTURERS APPROVED BACKDRAFT DAMPER AND BRICK VENT/WALL CAP. COORDINATE EXACT TERMINATION LOCATION, COLOR AND FINISH WITH ARCHITECT PRIOR TO INSTALLATION.
- 9 6"Ø EXHAUST AIR DUCT UP. TERMINATE THROUGH ROOF WITH BACKDRAFT DAMPER AND GOOSENECK. COORDINATE EXACT TERMINATION LOCATION W/ ARCHITECT PRIOR TO INSTALLATION.
- 10 CONTRACTOR SHALL PROVIDE A 12"Ø LINEAR BAR SUPPLY/RETURN GRILLE ABOVE BUILT-IN CABINETS (REFER TO ARCHITECTURAL PLANS). KRUEGER MODEL DFL OR EQUAL WITH BLANK OFF PANELS FOR INACTIVE SECTIONS AS REQUIRED. 100 CFM/FIT, 800 CFM TOTAL. BORDER, COLOR AND FINISH SHALL BE COORDINATED WITH ARCHITECT. PROVIDE INSULATED PLENUM BOX ON THE BACK OF THE GRILLE. CONTRACTOR SHALL PROVIDE ALL REQUIRED INTERNAL BRACING PER SMACNA STANDARDS (TYP.).

GENERAL NOTES

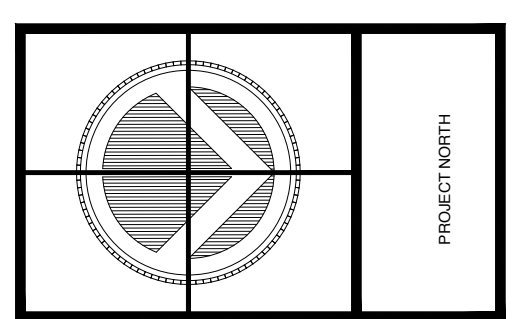
- 1. DUCTWORK SHOULD BE INSTALLED AS TIGHT AS POSSIBLE TO THE STRUCTURAL FRAMING AND DECK. MAINTAIN THE CEILING HEIGHTS AS SHOWN ON THE REFLECTED CEILING PLANS. COORDINATE ALL AIR DEVICES AND DUCTWORK W/ LIGHTING AND REFLECTED CEILING PLANS.
- 2. MECHANICAL CONTRACTOR SHALL COORDINATE WITH THE GENERAL CONTRACTOR ALL REQUIRED CEILING ACCESS PANELS OPENINGS TO SERVICE ALL MECHANICAL EQUIPMENT, BALANCING DEVICES, ETC. ALL ACCESS PANELS SHALL BE PROVIDED BY THE GENERAL CONTRACTOR AND INSTALLED BY MECHANICAL CONTRACTOR. ALL ACCESS PANEL LOCATIONS AND SIZES SHALL BE COORDINATED W/ ARCHITECT PRIOR TO INSTALLATION.
- 3. ALL DUCTWORK SIZES ARE SHOWN WITH CLEAR I.D. DIMENSIONS. ALL SUPPLY AND RETURN DUCTWORK WILL BE INSULATED (REFER TO MATERIAL AND INSULATION SCHEDULE FOR MORE INFORMATION).
- 4. DRAWING PLANS, SCHEMATICS, AND DIAGRAMS INDICATE GENERAL LOCATION AND ARRANGEMENT OF DUCT SYSTEMS, INDICATED DUCT LOCATIONS, CONFIGURATIONS AND ARRANGEMENTS ARE FOR REFERENCE ONLY. CONTRACTOR IS RESPONSIBLE TO PRODUCE A COMPLETE SET OF COORDINATION DRAWING INCLUDING ALL DUCT ELEVATIONS, CHANGES IN DIRECTION, TRANSITIONS AND ELEVATION CHANGES REQUIRED FOR A COMPLETELY COORDINATED INSTALLATION. COORDINATION DRAWINGS SHALL BE SUBMITTED TO ARCHITECT AND ENGINEER FOR REVIEW PRIOR TO INSTALLATION.
- 5. ALL DUCT SHAFT LOCATIONS, SIZES AND ALL SHAFT REQUIREMENTS SHALL BE FULLY COORDINATED WITH ARCHITECT.
- 6. ALL BRANCH DUCTWORK SHALL BE INSTALLED WITH BALANCING DAMPERS.
- 7. CONTRACTOR IS RESPONSIBLE FOR PROVIDING ALL COMPONENTS REQUIRED FOR A COMPLETE, COST EFFECTIVE, QUIET, ENERGY EFFICIENT AND FULLY OPERATIONAL MECHANICAL DESIGN.
- 8. ALL DUCTWORK SHALL BE CONSTRUCTED WITH GALVANIZED SHEET METAL IN COMPLIANCE WITH SMACNA STANDARDS.
- 9. CONTRACTOR SHALL FURNISH AND INSTALL FIRE DAMPERS OR FIRE/SMOKE COMBINATION DAMPERS WHERE REQUIRED TO MEET FIRE RATINGS OF FLOORS, WALLS AND CEILING SYSTEMS. REFER TO THE ARCHITECTURAL PLANS. PROVIDE FRAMED, HINGED, LOCKABLE ACCESS PANELS AT ALL DAMPERS.
- 10. ALL CONCEALED SUPPLY AIR DUCTWORK SHALL BE WRAPPED WITH A MINIMUM OF R-5 INSULATION. ALL CONCEALED RETURN AIR DUCTWORK SHALL BE WRAPPED WITH A MINIMUM OF R-5 INSULATION. INSULATE ALL DUCTWORK THAT IS INSTALLED IN JOIST SPACE ON THE TOP FLOOR WITH A MINIMUM OF R-8 INSULATION. INSULATION SHALL BE IN STRICT ACCORDANCE WITH ALL MANUFACTURERS AND REQUIREMENTS. ALL VAPOR BARRIERS MUST BE MAINTAINED. ALL EXPOSED DUCTWORK SHALL HAVE 1" INTERNAL INSULATION.

Scott White, P.E.
 NJ License # 24GE04977900
 Authorization No: 24GA28143700



HOLSTEIN WHITE, INC.
 CONSULTING ENGINEERS
 210 E. STREET ROAD TEL # (215)322-7711
 SUITE 210 FAX # (215)322-7709
 FEASTERSVILLE, PA 19053

OSK DESIGN PARTNERS, PA
 ARCHITECTS AND LAND PLANNERS
 www.oskdesignpartners.com
 9616 SECOND AVENUE, SUITE 200,
 STONE HARBOR, NEW JERSEY 08347
 PHONE: (856)848-0800 FAX: (856)848-0993
 PARTNER: GERALD S. BLACKMAN, JR.
 FOUNDER: JOHN J. OLIVERI (066-0699) NCARB
 PRINCIPAL: PAUL A. HISS, AIA, P.E., NCARB
 REGISTERED IN: DELAWARE • FLORIDA • GEORGIA • ILLINOIS • MARYLAND
 • MASSACHUSETTS • NEW JERSEY • NEW YORK • PENNSYLVANIA • VIRGINIA • WISCONSIN



CMCMUA ADMINISTRATION BUILDING
 1523 ROUTE 9, SWANTON
 MIDDLE TOWNSHIP, NEW JERSEY 088210
 MECHANICAL - FIRST FLOOR PLAN

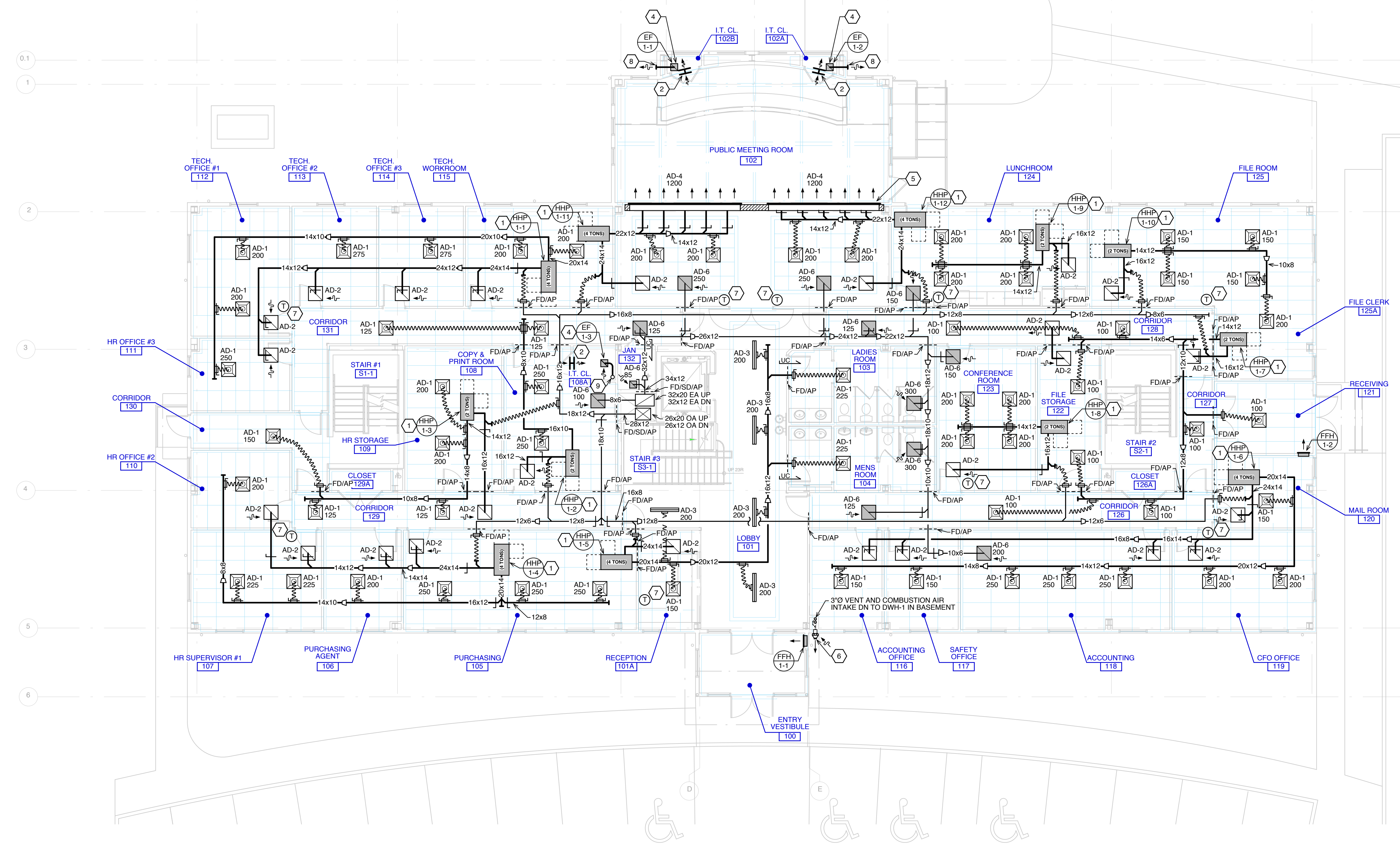
PROJECT
 CONTRACTOR SHALL CHECK & FIELD CONDITIONS PRIOR TO STARTING CONSTRUCTION.
 DWG. TITLE

ALL RIGHTS RESERVED
 OSK DESIGN PARTNERS, P.A.
 ALL DRAWINGS COPYRIGHT

REVISIONS:	
DRAWN BY:	DB
CHECKED BY:	JB
DATE:	11-30-2015
SCALE:	AS NOTED

JOB NO. 15-260
FILE:
ISSUED FOR BIDDING 2 02-12-2016
ISSUED FOR CONSTRUCTION PERMITS 1 01-27-2016
DRAWING ISSUE No. DATE

M1-2



1 MECHANICAL - FIRST FLOOR PLAN
 SCALE: 1/8" = 1'-0"