

NOTES:

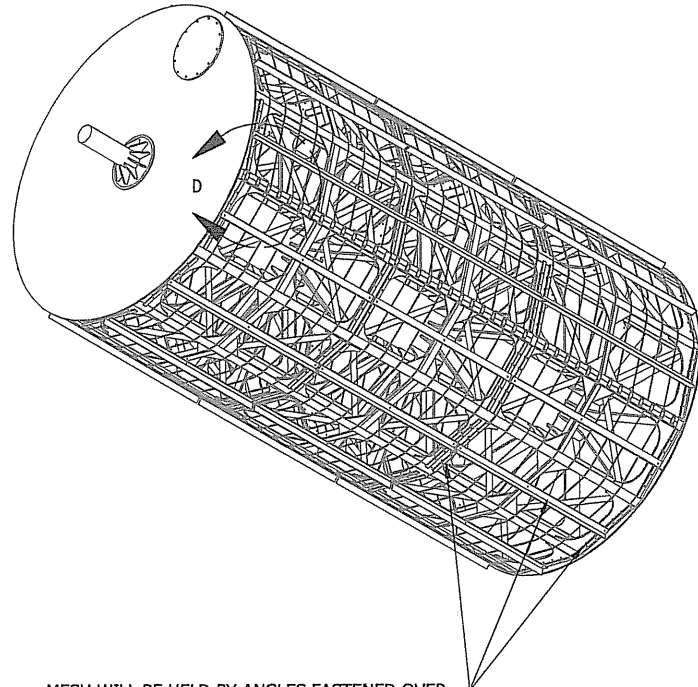
1. REMOVE ALL BURRS AND SHARP EDGES; ROUND ALL CORNERS.
2. REMOVE ALL WELD SPATTER, SLAG AND DISCOLORATION.
3. MATERIAL: AS PER BOM
4. MESH NOT SHOWN FOR CLARITY

All welds will be per latest American Welding Society standards.

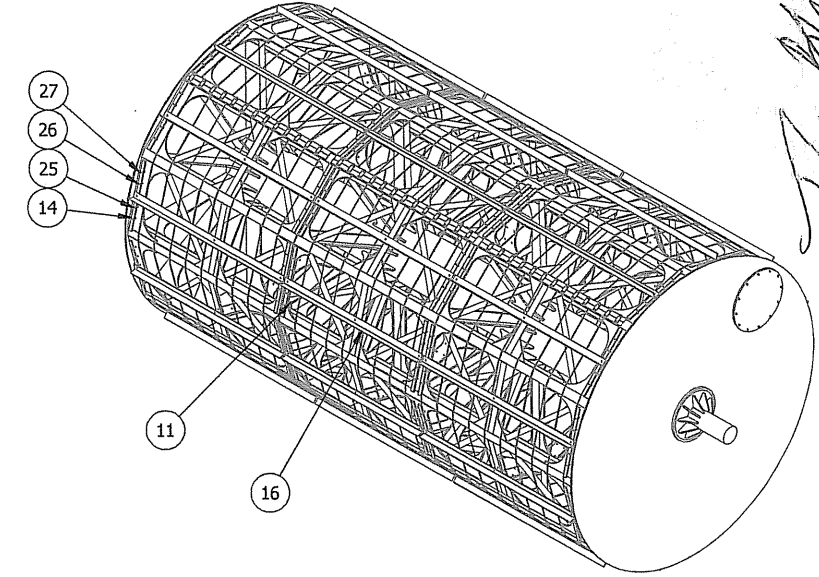
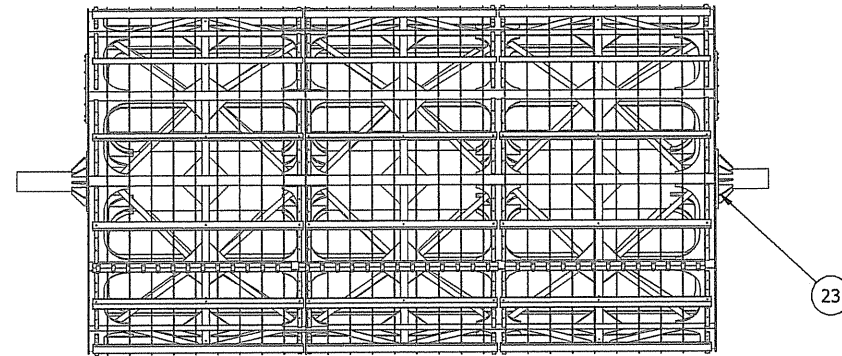
All fillet welds per drawing.

All CS painted to spec 540126 up to bearing.

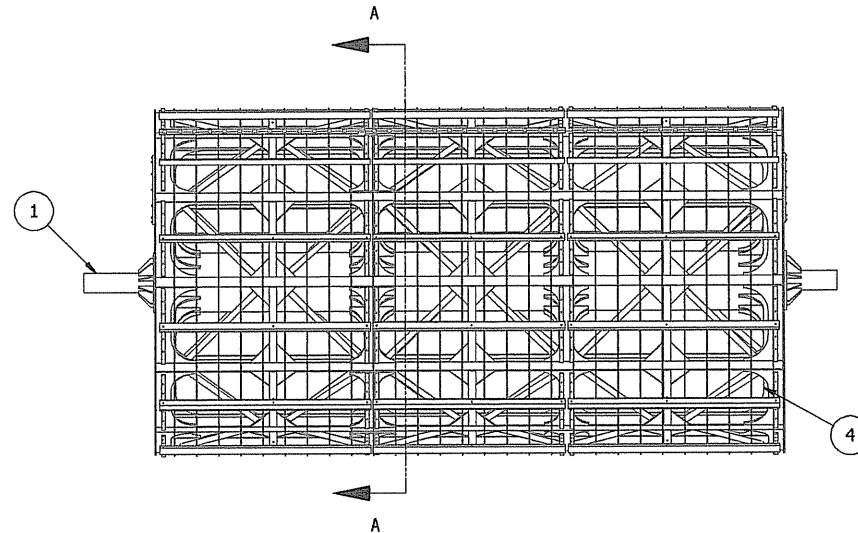
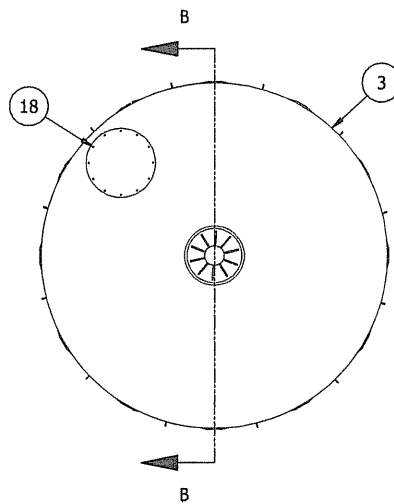
General construction is 3/4" Thick; Bulkheads are 1/2".



MESH WILL BE HELD BY ANGLES FASTENED OVER THE MESH TO THE STRUCTURAL DRUM AND INTERLOCKED WITH A FLAT BAR ACROSS. (MESH NOT SHOWN FOR CLARITY)



J. Van Dyke
3/12/09



ITEM	QTY	PART NUMBER	DESCRIPTION	MATERIAL
25	474	3/8 WASHER	WASHER	304SS
26	474	3/8-16 HEX NUT	NUT	304SS
27	474	3/8-16 x 1 1/2 BOLT	BOLT HEX HEAD	304SS
24	24	140280032	SPOKE	A36
23	24	140280031	GUSSET, STUBSHAFT	A36
22	33	140280030	CABLE, 19 STRANTS & TURNBUCKLES	304SS
21	56	140280029	MESH CLOSING BRACKET	304SS
20	2	140280028	1 x 1/8 x 86 FLAT BAR	304SS
19	1	140280027	1 3/4 x 1 3/4 CHAIN FENCE, 9GA	304SS
18	2	140280019	COVER	A36
16	12	140280017	MESHFASTENER2CENTER	304SS
15	24	140280016	MESHFASTENER3	304SS
14	72	140280015	MESHFASTENER1	304SS
13	24	140280013	INSIDE SPOKE CENTER STIFFENER	A36
11	72	140280012	EXTERNAL TUBE	A36
10	24	140280011	GUSSET	A36
9	24	140280010	INSIDE_SPOKE_CENTER	A36
8	144	140280009	TRI_BRACKETS	A36
7	24	140280008	SPOKE_CENTER	A36
6	36	140280007	3X3X1/4 OUT BEAM	A36
5	24	140280006	SPOKE_CENTER_OUT_LAT	A36
4	12	140280005	W 6X12 I-BEAM 23'-6"LG	A36
3	2	140280004	BULKHEAD	A36
1	1	140280002	SHAFT_ASSY_ASM	SEE DRW 140280002

PART LIST

This drawing and all appurtenant matter contains information proprietary to PARKSON CORPORATION and is loaned subject to return upon demand and must not be reproduced, copied, loaned, revealed, nor used for any purpose other than that for which it is specifically furnished without expressed written consent of PARKSON CORPORATION. The Owner, Project Engineer, and all others involved with the project design must implement and follow all safety standards required by local, state and federal laws when incorporating Parkson Corporation equipment into the overall project design. Parkson Corporation will not be responsible for location and/or placement of equipment in the plant design, nor is Parkson Corporation responsible for plant safety design and for the failure to follow appropriate safety precautions in the operation and maintenance of Parkson Corporation equipment.

REV.	DESCRIPTION	DATE	BY

PRELIMINARY APPROVAL
INFORMATION CERTIFIED

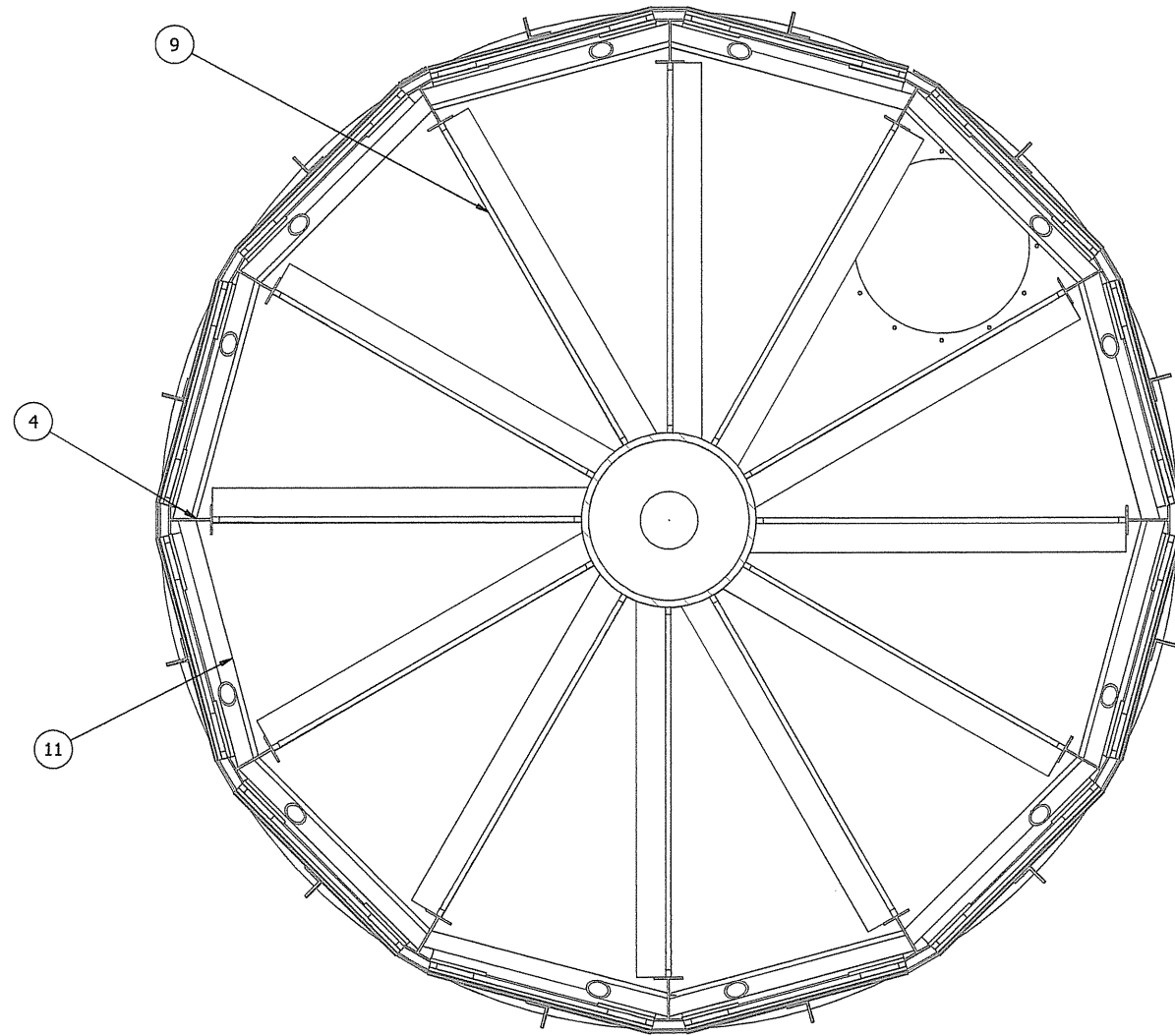
THIS DRAWING IS LIMITED TO FUNCTIONAL DESIGN, GENERAL ARRANGEMENT AND CLEARANCE. NO RESPONSIBILITY IS ACCEPTED BY PARKSON CORPORATION FOR OTHER DIMENSIONS, QUANTITIES, OR COORDINATION WITH OTHER EQUIPMENT OR DRAWINGS EXCEPT AS STATED IN PURCHASE ORDER.

DRAWN BY: A.R. DATE: 5/21/2008
CHECKED BY: Adolfo R DATE: 5/28/2008
SCALE: SIZE B

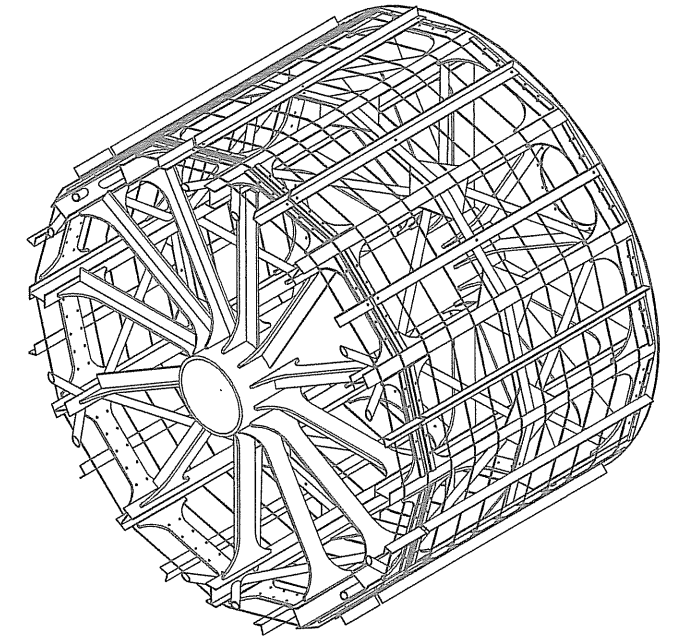


PROJECT NAME: CAPE MAY
REFERENCE INFORMATION

TITLE: Geo Reactor GR140x28 GENERAL ARRAGEMENT
DRAWING NO.: GR140280001
REV: 2
SHEET 1 OF 5



SECTION A-A
SCALE 1/25



ISOMETRIC VIEW
OF SECTION A-A

Tom Blanton
3/12/09

This drawing and all appurtenant matter contains information proprietary to PARKSON CORPORATION and is loaned subject to return upon demand and must not be reproduced, copied, loaned, revealed, nor used for any purpose other than that for which it is specifically furnished without expressed written consent of PARKSON CORPORATION. The Owner, Project Engineer, and all others involved with the project design must implement and follow all safety standards required by local, state and federal laws when incorporating Parkson Corporation equipment into the overall project design. Parkson Corporation will not be responsible for location and/or placement of equipment in the plant design, nor is Parkson Corporation responsible for plant safety design and for the failure to follow appropriate safety precautions in the operation and maintenance of Parkson Corporation equipment.

REV.	DESCRIPTION	DATE	BY

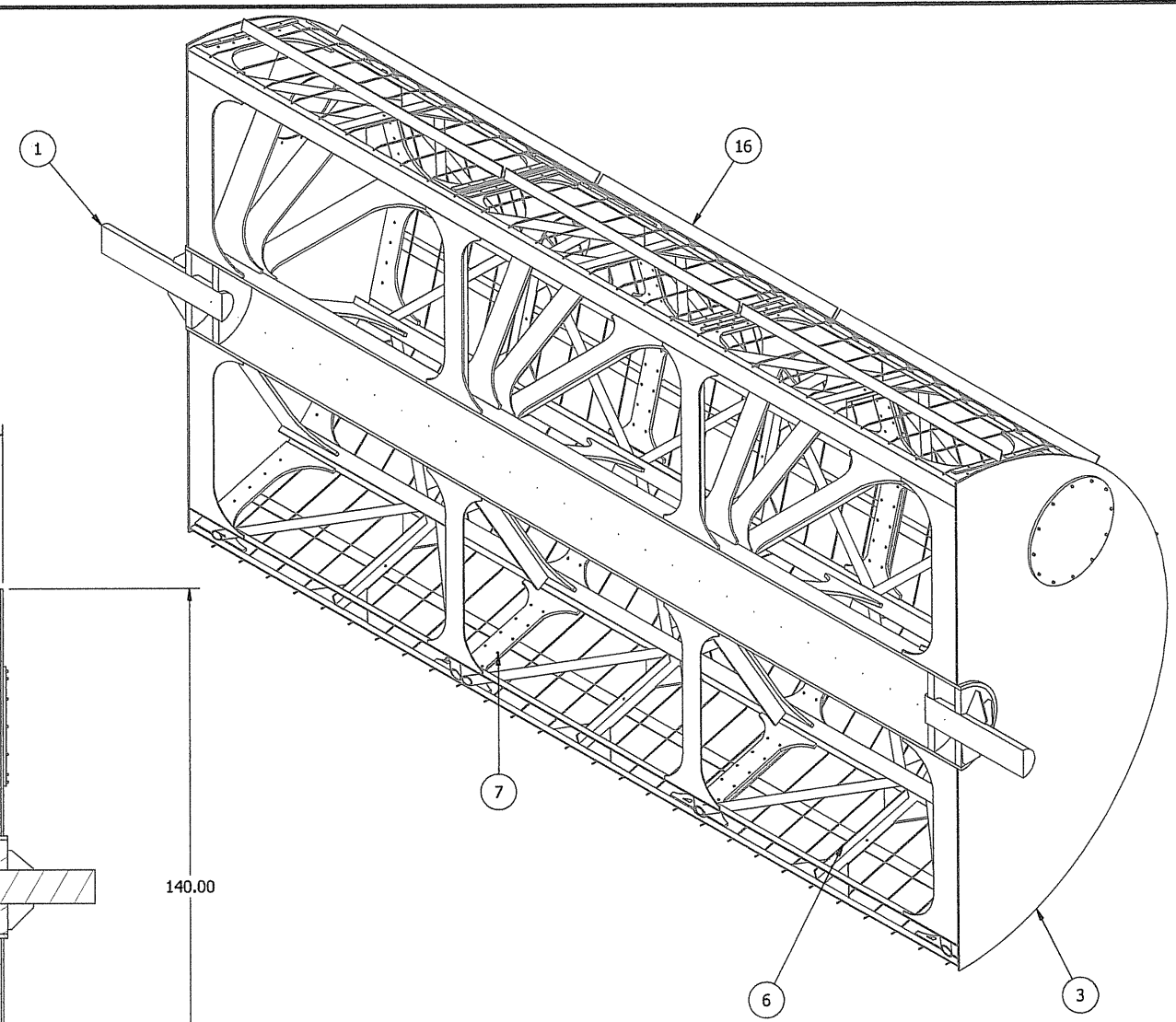
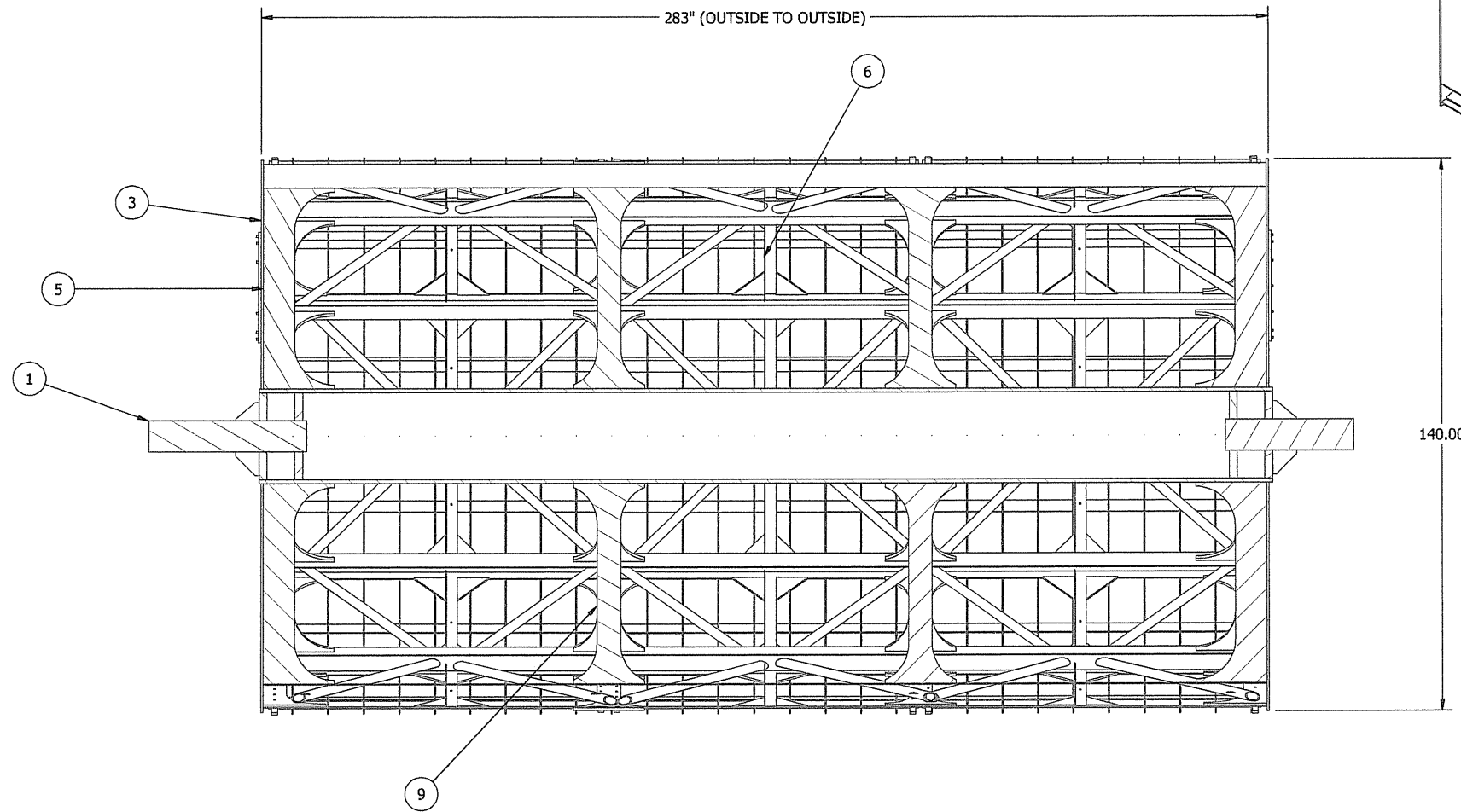
PRELIMINARY APPROVAL
 INFORMATION CERTIFIED
 THIS DRAWING IS LIMITED TO FUNCTIONAL DESIGN, GENERAL ARRANGEMENT AND CLEARANCE. NO RESPONSIBILITY IS ACCEPTED BY PARKSON CORPORATION FOR OTHER DIMENSIONS, QUANTITIES, OR COORDINATION WITH OTHER EQUIPMENT OR DRAWINGS EXCEPT AS STATED IN PURCHASE ORDER.

DRAWN BY A.R	DATE 5/21/2008
CHECKED BY Adolfo R	DATE 5/28/2008
SCALE	SIZE B



PROJECT NAME	TITLE SECTION A-A
REFERENCE INFORMATION	DRAWING NO. GR140280001

REV 2
SHEET 2 OF 5



SECTION B-B
SCALE 1/40

Handwritten signature and date:
3/12/09

This drawing and all appurtenant matter contains information proprietary to PARKSON CORPORATION and is loaned subject to return upon demand and must not be reproduced, copied, loaned, revealed, nor used for any purpose other than that for which it is specifically furnished without expressed written consent of PARKSON CORPORATION. The Owner, Project Engineer, and all others involved with the project design must implement and follow all safety standards required by local, state and federal laws when incorporating Parkson Corporation equipment into the overall project design. Parkson Corporation will not be responsible for location and/or placement of equipment in the plant design, nor is Parkson Corporation responsible for plant safety design and for the failure to follow appropriate safety precautions in the operation and maintenance of Parkson Corporation equipment.

REV.	DESCRIPTION	DATE	BY

PRELIMINARY APPROVAL
INFORMATION CERTIFIED

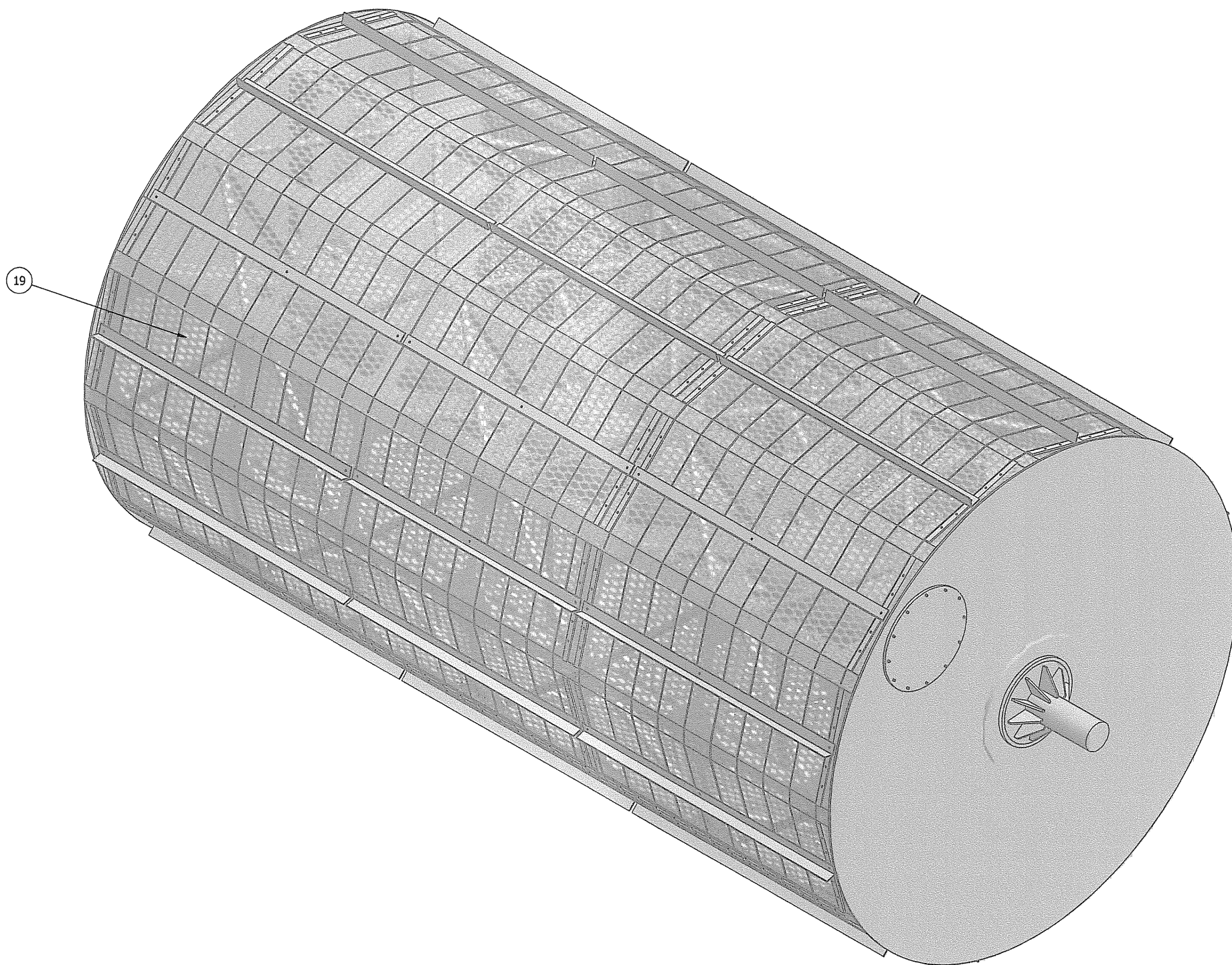
THIS DRAWING IS LIMITED TO FUNCTIONAL DESIGN, GENERAL ARRANGEMENT AND CLEARANCE. NO RESPONSIBILITY IS ACCEPTED BY PARKSON CORPORATION FOR OTHER DIMENSIONS, QUANTITIES, OR COORDINATION WITH OTHER EQUIPMENT OR DRAWINGS EXCEPT AS STATED IN PURCHASE ORDER.

DRAWN BY A.R	DATE 5/21/2008
CHECKED BY Adolfo R	DATE 5/28/2008
SCALE	SIZE B



PROJECT NAME	TITLE SECTION B-B
REFERENCE INFORMATION	DRAWING NO. GR140280001

REV 2
SHEET 3 OF 5



*J. Cal. B. W. / a R
3/12/09*

This drawing and all appurtenant matter contains information proprietary to PARKSON CORPORATION and is loaned subject to return upon demand and must not be reproduced, copied, loaned, revealed, nor used for any purpose other than that for which it is specifically furnished without expressed written consent of PARKSON CORPORATION. The Owner, Project Engineer, and all others involved with the project design must implement and follow all safety standards required by local, state and federal laws when incorporating Parkson Corporation equipment into the overall project design. Parkson Corporation will not be responsible for location and/or placement of equipment in the plant design, nor is Parkson Corporation responsible for plant safety design and for the failure to follow appropriate safety precautions in the operation and maintenance of Parkson Corporation equipment.

REV.	DESCRIPTION	DATE	BY

PRELIMINARY APPROVAL
 INFORMATION CERTIFIED

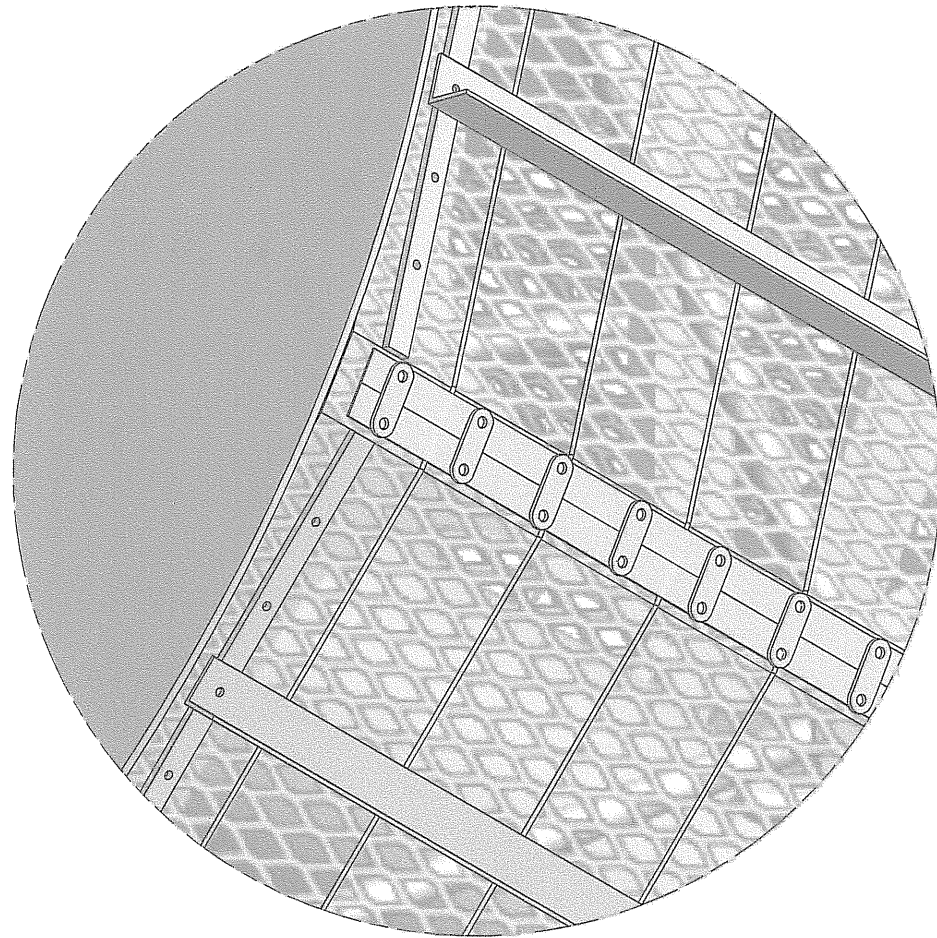
THIS DRAWING IS LIMITED TO FUNCTIONAL DESIGN, GENERAL ARRANGEMENT AND CLEARANCE. NO RESPONSIBILITY IS ACCEPTED BY PARKSON CORPORATION FOR OTHER DIMENSIONS, QUANTITIES, OR COORDINATION WITH OTHER EQUIPMENT OR DRAWINGS EXCEPT AS STATED IN PURCHASE ORDER.

DRAWN BY	DATE
A.R	5/21/2008
CHECKED BY	DATE
Adolfo R	5/28/2008
SCALE	SIZE
	B

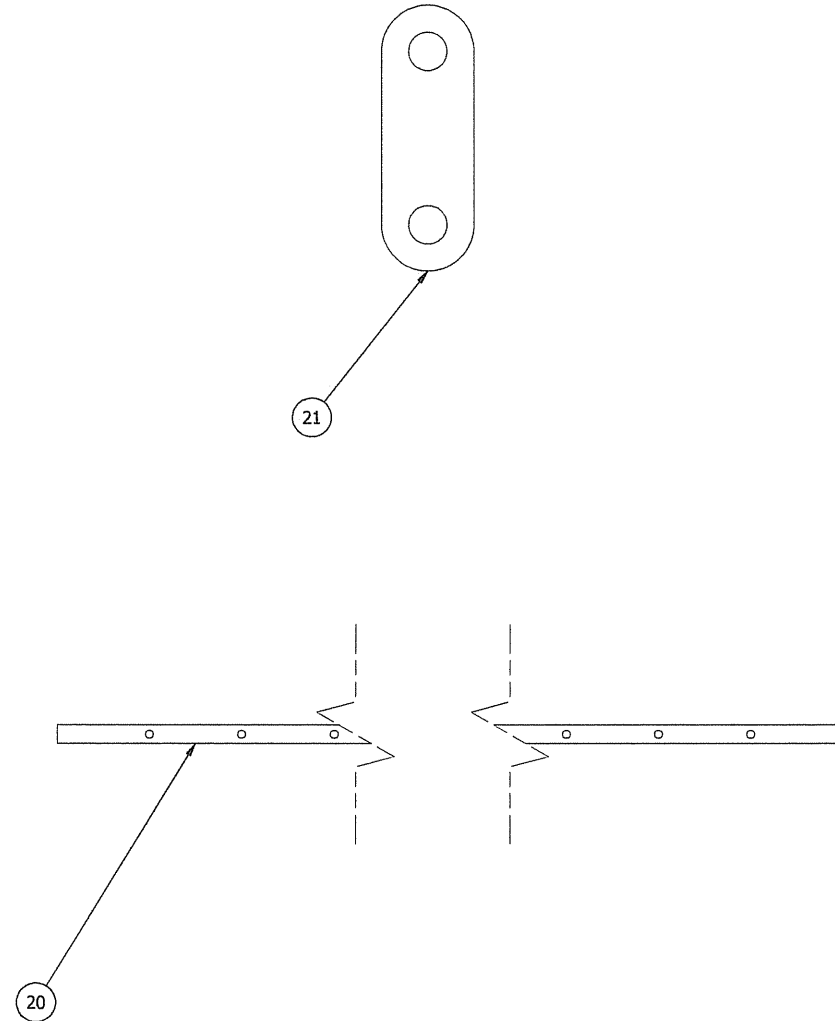


PROJECT NAME	CAPE MAY
REFERENCE INFORMATION	

TITLE	Geo Reactor GR140x28 ISOMETRIC VIEW
DRAWING NO.	GR140280001
REV	2



DETAIL D
SCALE 1/10



J. Camacho
3/12/09

This drawing and all appurtenant matter contains information proprietary to PARKSON CORPORATION and is loaned subject to return upon demand and must not be reproduced, copied, loaned, revealed, nor used for any purpose other than that for which it is specifically furnished without expressed written consent of PARKSON CORPORATION. The Owner, Project Engineer, and all others involved with the project design must implement and follow all safety standards required by local, state and federal laws when incorporating Parkson Corporation equipment into the overall project design. Parkson Corporation will not be responsible for location and/or placement of equipment in the plant design, nor is Parkson Corporation responsible for plant safety design and for the failure to follow appropriate safety precautions in the operation and maintenance of Parkson Corporation equipment.

REV.	DESCRIPTION	DATE	BY

PRELIMINARY APPROVAL
 INFORMATION CERTIFIED
 THIS DRAWING IS LIMITED TO FUNCTIONAL DESIGN, GENERAL ARRANGEMENT AND CLEARANCE. NO RESPONSIBILITY IS ACCEPTED BY PARKSON CORPORATION FOR OTHER DIMENSIONS, QUANTITIES, OR COORDINATION WITH OTHER EQUIPMENT OR DRAWINGS EXCEPT AS STATED IN PURCHASE ORDER.

DRAWN BY	DATE
A.R	5/21/2008
CHECKED BY	DATE
Adolfo R	5/28/2008
SCALE	SIZE
	B

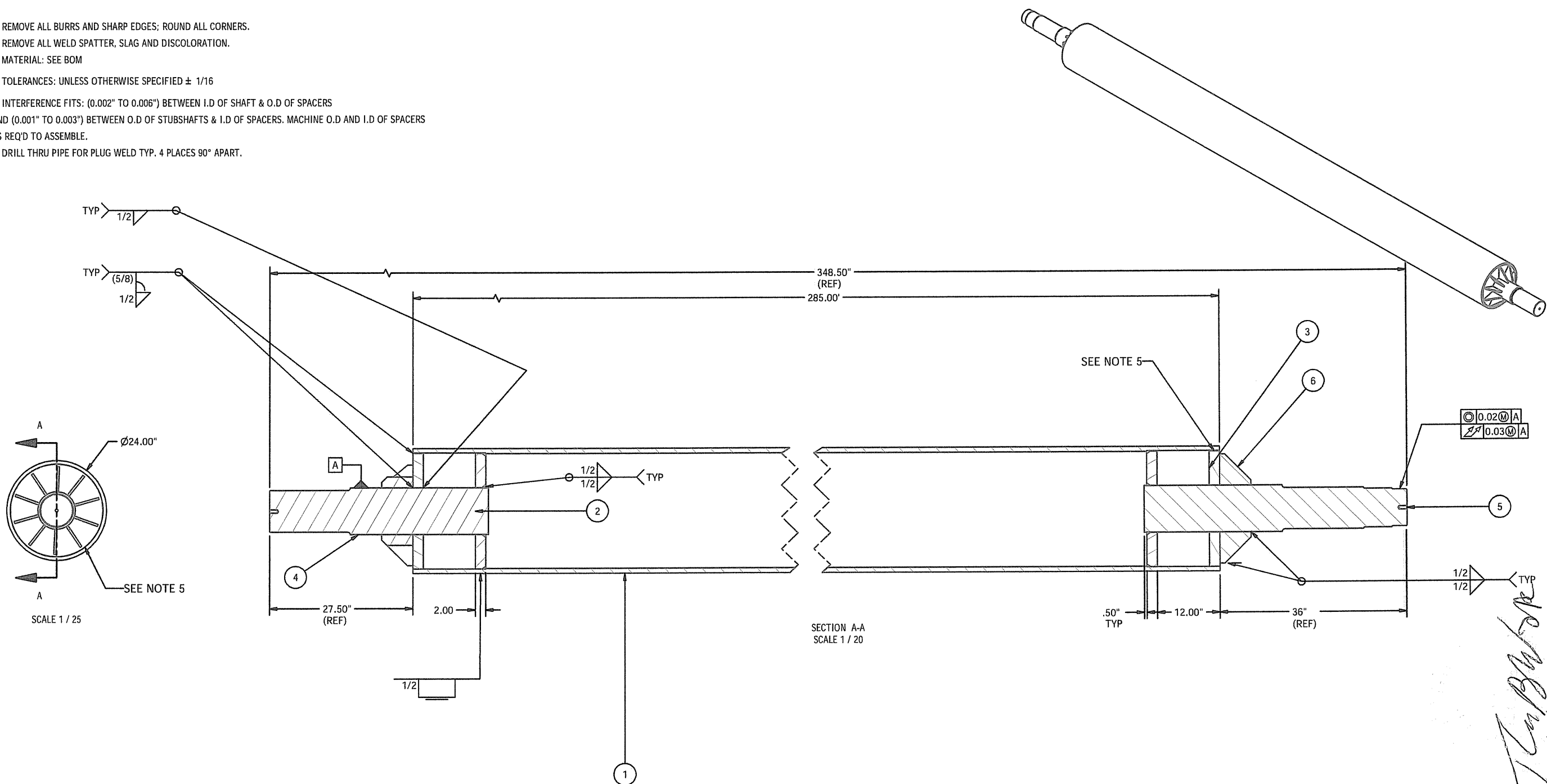


PROJECT NAME	TITLE
CAPE MAY	Geo Reactor GR140x28 DETAIL D
REFERENCE INFORMATION	DRAWING NO.
	GR140280001

REV	2
SHEET 5 OF 5	

NOTES:

1. REMOVE ALL BURRS AND SHARP EDGES; ROUND ALL CORNERS.
2. REMOVE ALL WELD SPATTER, SLAG AND DISCOLORATION.
3. MATERIAL: SEE BOM
4. TOLERANCES: UNLESS OTHERWISE SPECIFIED $\pm 1/16$
5. INTERFERENCE FITS: (0.002" TO 0.006") BETWEEN I.D OF SHAFT & O.D OF SPACERS AND (0.001" TO 0.003") BETWEEN O.D OF STUBSHAFTS & I.D OF SPACERS. MACHINE O.D AND I.D OF SPACERS AS REQ'D TO ASSEMBLE.
6. DRILL THRU PIPE FOR PLUG WELD TYP. 4 PLACES 90° APART.



J. Cap...
3/12/09

ITEM	QTY	PART NUMBER	DESCRIPTION	MATERIAL
6	20	140280031	Gusset-Stubshaft	A36
5	1	140280021	Driven-Stubshaft	CR 1018
4	1	140280022	Idle-Stubshaft	CR1018
3	2	140280020	Shaft-Spacer	A36
2	2	140280050	Shaft-Inner-Spacer	A36
1	1	140280023	Shaft (SCH 80 PIPE)	A53B

This drawing and all appurtenant matter contains information proprietary to PARKSON CORPORATION and is loaned subject to return upon demand and must not be reproduced, copied, loaned, revealed, nor used for any purpose other than that for which it is specifically furnished without expressed written consent of PARKSON CORPORATION. The Owner, Project Engineer, and all others involved with the project design must implement and follow all safety standards required by local, state and federal laws when incorporating Parkson Corporation equipment into the overall project design. Parkson Corporation will not be responsible for location and/or placement of equipment in the plant design, nor is Parkson Corporation responsible for plant safety design and for the failure to follow appropriate safety precautions in the operation and maintenance of Parkson Corporation equipment.

REV.	DESCRIPTION	DATE	BY

PRELIMINARY APPROVAL
 INFORMATION CERTIFIED

THIS DRAWING IS LIMITED TO FUNCTIONAL DESIGN, GENERAL ARRANGEMENT AND CLEARANCE. NO RESPONSIBILITY IS ACCEPTED BY PARKSON CORPORATION FOR OTHER DIMENSIONS, QUANTITIES, OR COORDINATION WITH OTHER EQUIPMENT OR DRAWINGS EXCEPT AS STATED IN PURCHASE ORDER.

DRAWN BY	DATE
A.R	11/5/2008
CHECKED BY	DATE
ENG	1/7/2008
SCALE	SIZE
SEE DWG	B

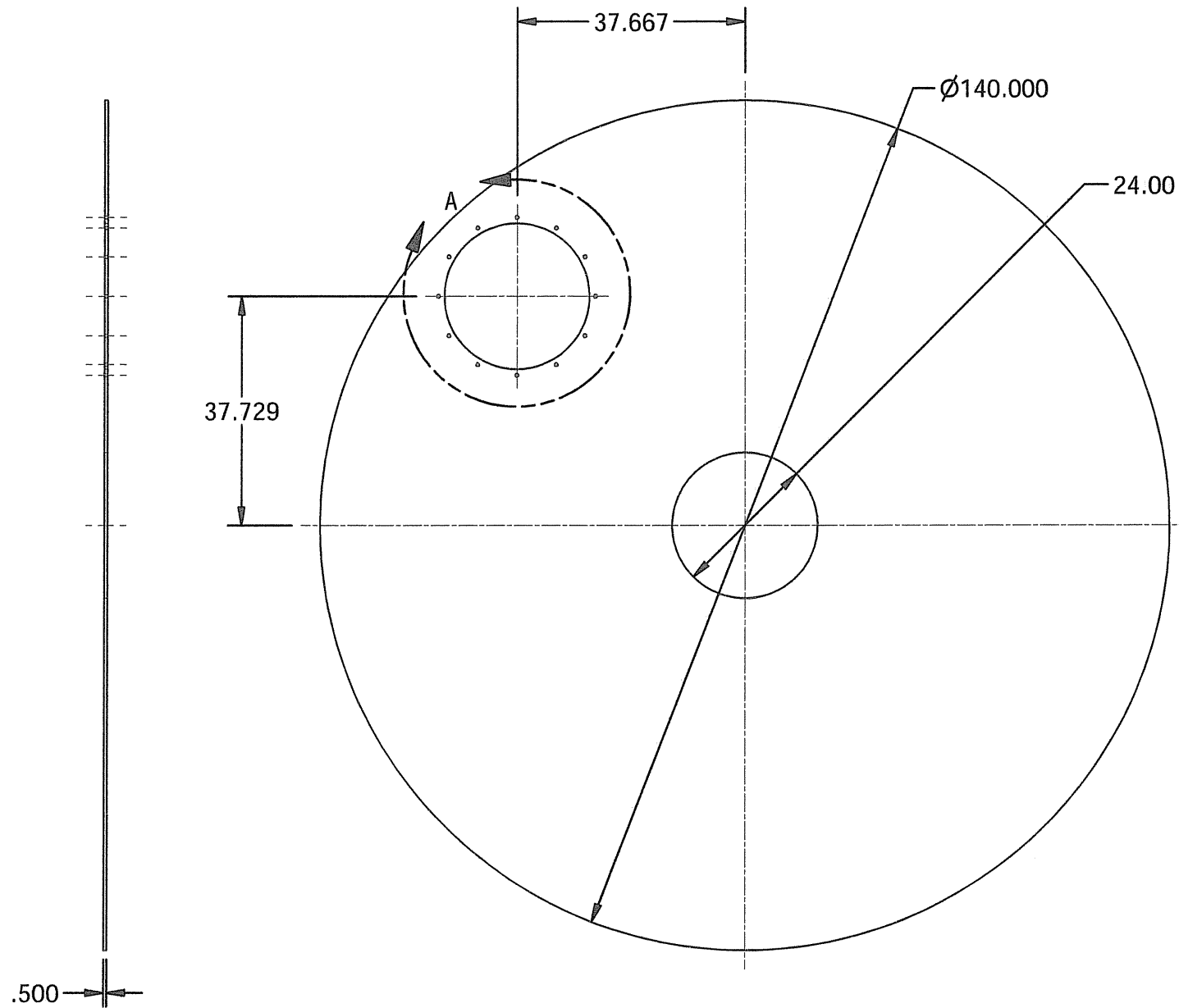


PROJECT NAME	CAPE MAY
REFERENCE INFORMATION	

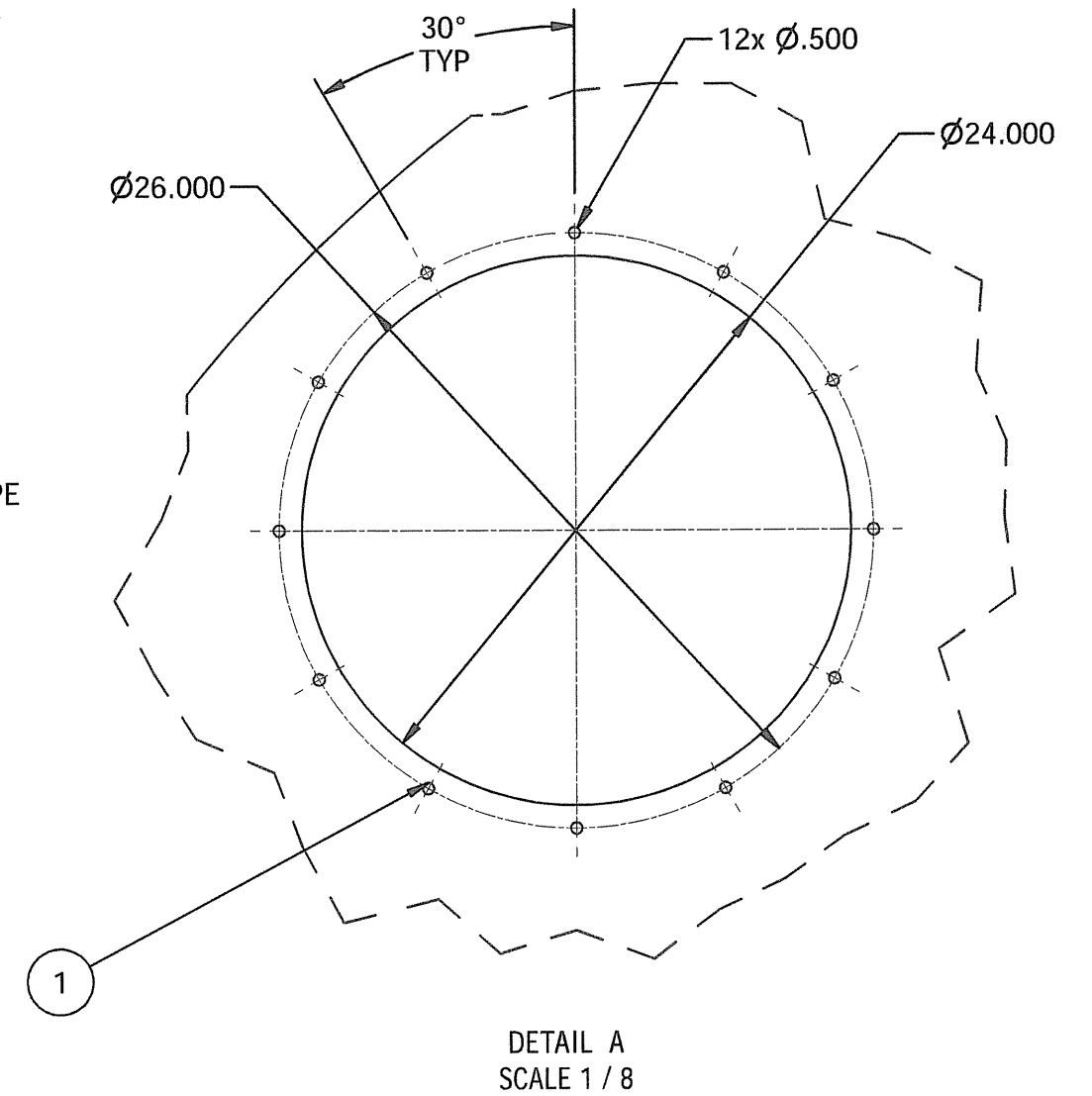
TITLE	GEO REACTOR GR140X28
DRAWING NO.	GR140280002
REV	SHEET 1 OF 1

NOTES:

1. REMOVE ALL BURRS AND SHARP EDGES: ROUND ALL CORNERS.
2. REMOVE ALL WELD SPATTER, SLAG AND DISCOLORATION.
3. MATERIAL : A36



FIT TO SUIT PIPE



DETAIL A
SCALE 1 / 8

R. Raghuram
3/12/09

ITEM	QTY	PART NUMBER	DESCRIPTION	MATERIAL
1	12	GR140280041	Threaded Stud .06 x 45 (angle), 1.75LG Chamfer both ends, 1/2-13 UNC-2A	SS304

PART LIST				TITLE	
DRAWN BY	DATE	Parkson		BULKHEAD	
RAGHU	5/23/2008				
CHECKED BY	DATE			DRAWING NO:	REV
ENG	1/22/2008				
SCALE	WEIGHT	GR140280004			
1:25					
ER:	SIZE				
	B				

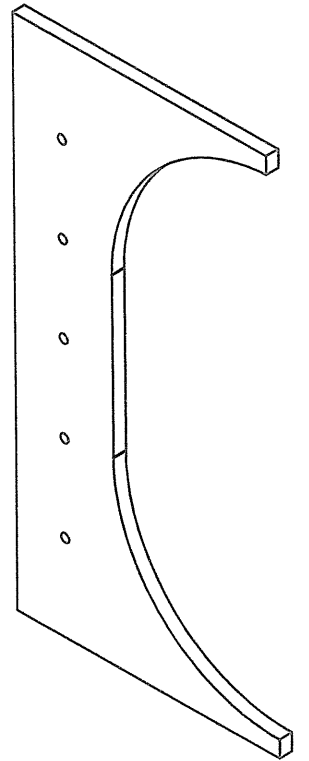
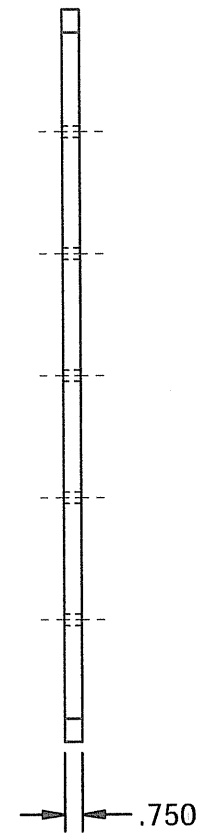
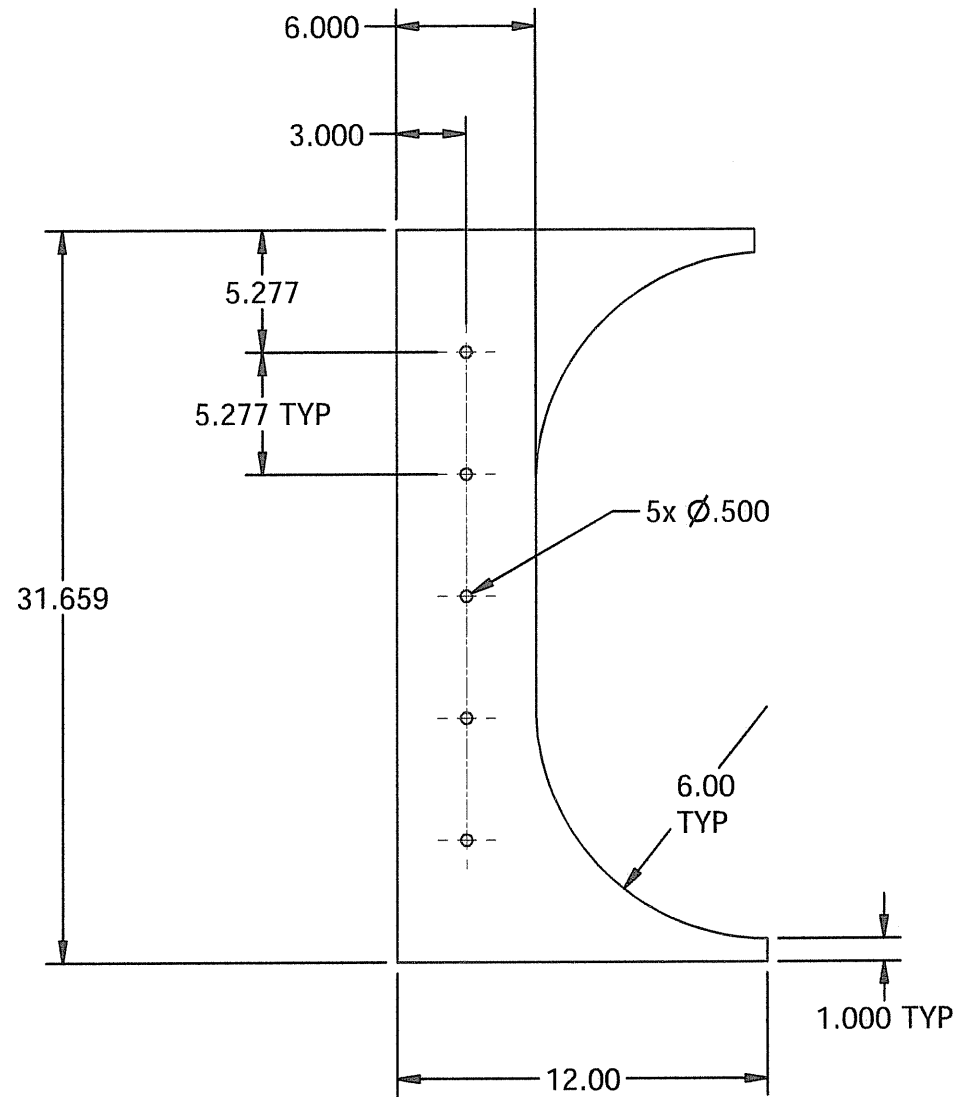
REV	DESCRIPTION	BY	DATE	ECO	CHK

TOLERANCES	
Except where noted	
3-FIG DEC	±.030
2-FIG DEC	±.06
ANGULAR	±1/2°
MAX EDGE RAD	.13
WELD SIZE	1/8
MACHINED SURFACES	150
NOT TO EXCEED	✓

REVISION SCHEDULE

NOTES:

1. REMOVE ALL BURRS AND SHARP EDGES: ROUND ALL CORNERS.
2. REMOVE ALL WELD SPATTER, SLAG AND DISCOLORATION.
3. MATERIAL : A36



J. Paul [Signature]
3/12/09

REV	DESCRIPTION	BY	DATE	ECO	CHK
REVISION SCHEDULE					

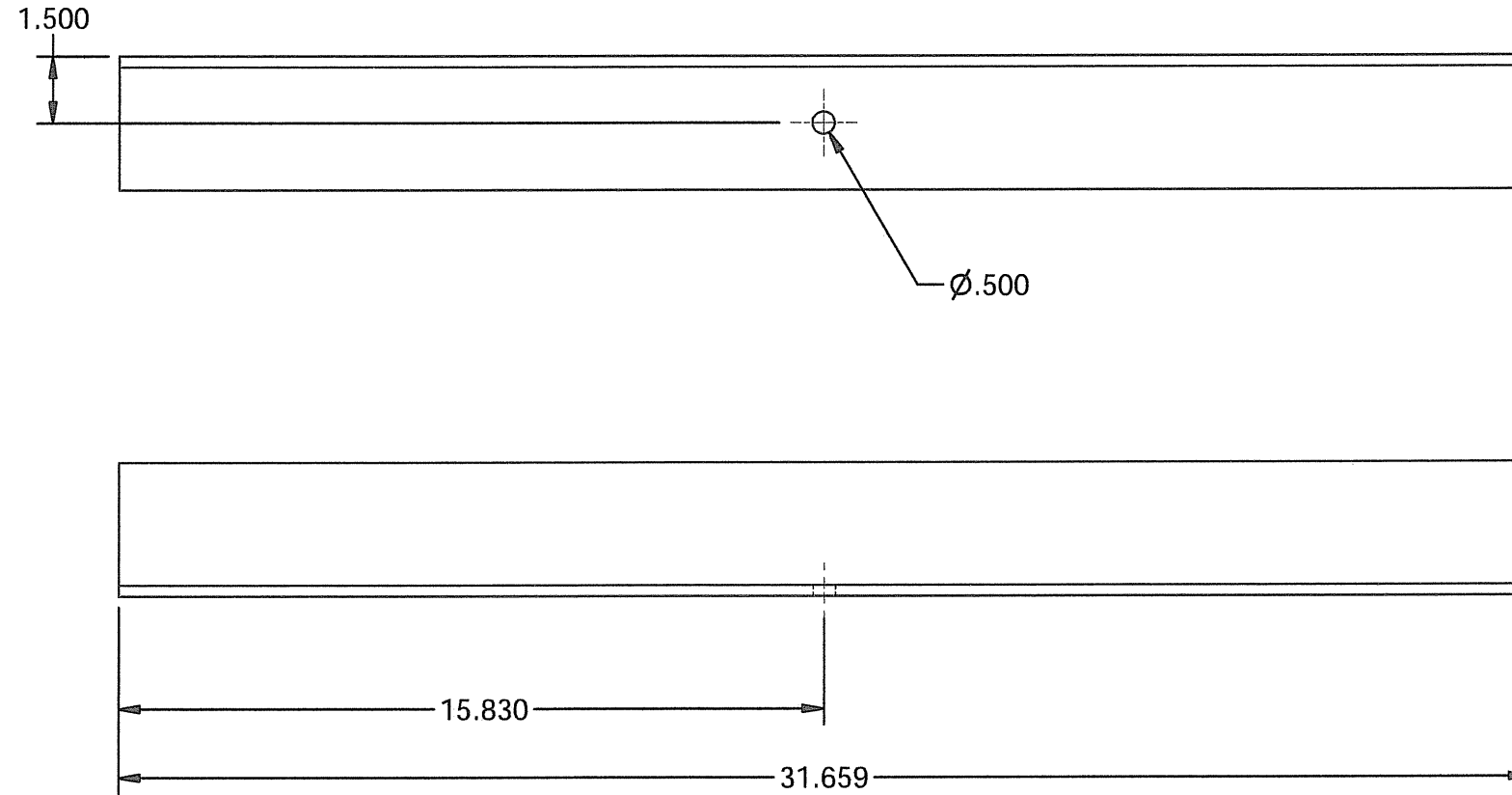
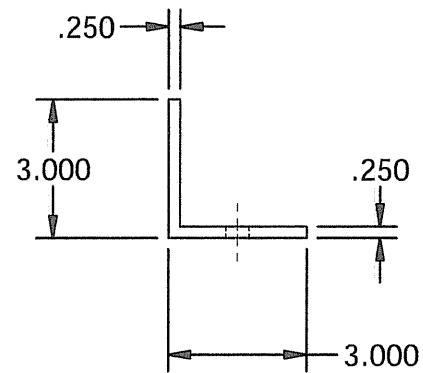
TOLERANCES		DRAWN BY	DATE
Except where noted		raghup	6/9/2008
3-FIG DEC	±.030	CHECKED BY	DATE
2-FIG DEC	±.06	ENG	1/22/2008
ANGULAR	±1/2°	SCALE	WEIGHT
MAX EDGE RAD	.13	1/8	
WELD SIZE	1/8	ER:	SIZE
MACHINED SURFACES	150		B
NOT TO EXCEED	✓		



TITLE		REV
SPOKE_CENTER_OUT_LAT		
DRAWING NO:	GR140280006	
SHEET 1 OF 1		

NOTES:

1. REMOVE ALL BURRS AND SHARP EDGES: ROUND ALL CORNERS.
2. REMOVE ALL WELD SPATTER, SLAG AND DISCOLORATION.
3. MATERIAL : A36 (EQUAL ANGLE)



J. Paul Parkson
3/12/09

REV	DESCRIPTION	BY	DATE	ECO	CHK
REVISION SCHEDULE					

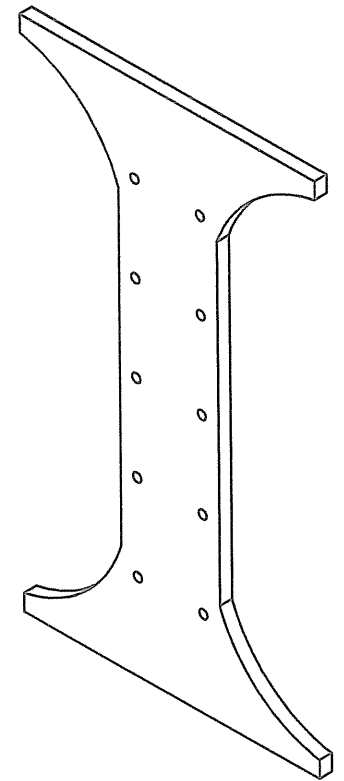
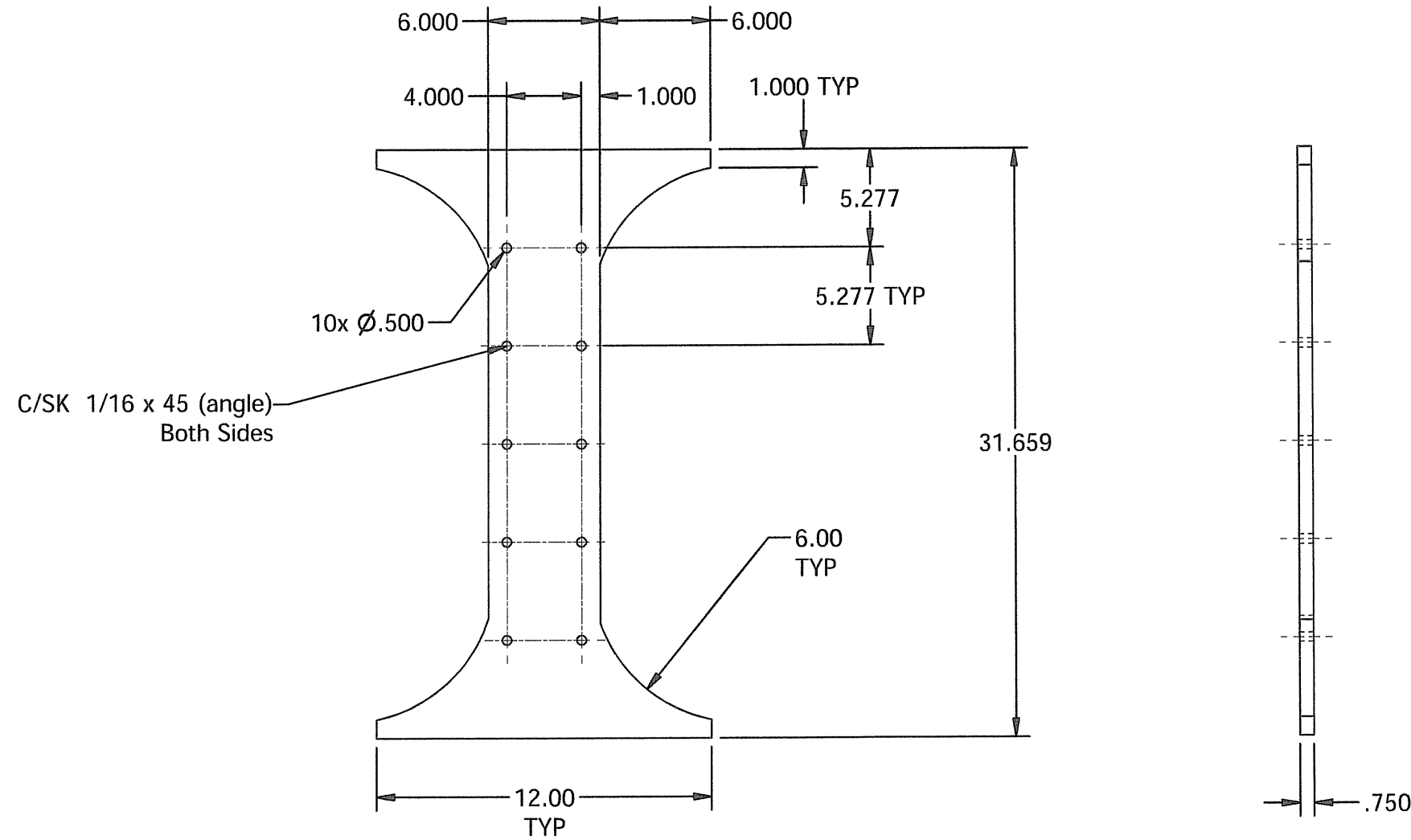
TOLERANCES		DRAWN BY	DATE
Except where noted		RAGHU	5/22/2008
3-FIG DEC	±.030	CHECKED BY	DATE
2-FIG DEC	±.06	ENG	1/22/2008
ANGULAR	±1/2°	SCALE	WEIGHT
MAX EDGE RAD	.13	1:4	
WELD SIZE	1/8	ER:	SIZE
MACHINED SURFACES NOT TO EXCEED	150 ✓		B



TITLE		3x3x1/4 OUT BEAM
DRAWING NO:	GR140280007	REV
		SHEET 1 OF 1

NOTES:

1. REMOVE ALL BURRS AND SHARP EDGES: ROUND ALL CORNERS.
2. REMOVE ALL WELD SPATTER, SLAG AND DISCOLORATION.
3. MATERIAL : A36



*J. Lee, B. B. / MR
3/12/09*

REV	DESCRIPTION	BY	DATE	ECO	CHK
REVISION SCHEDULE					

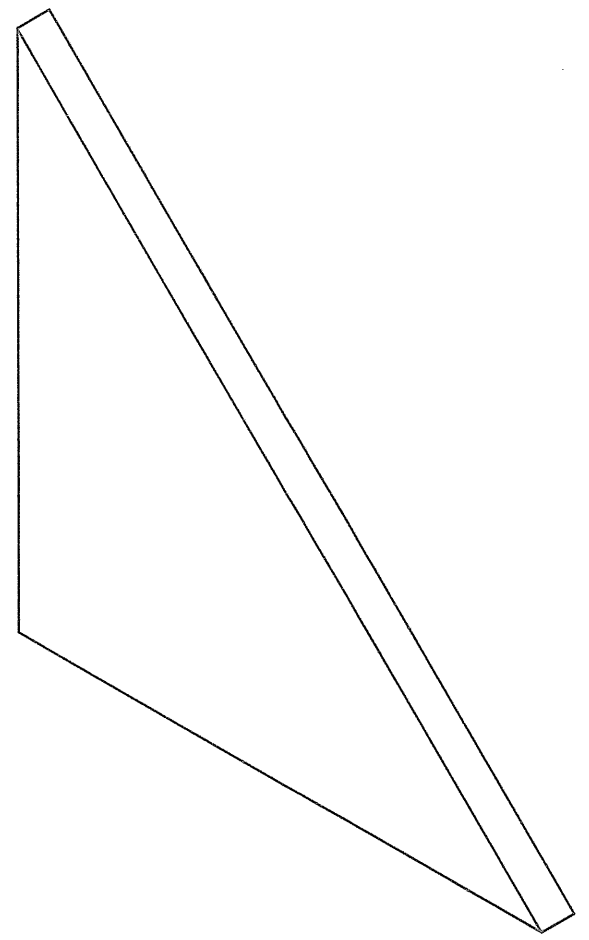
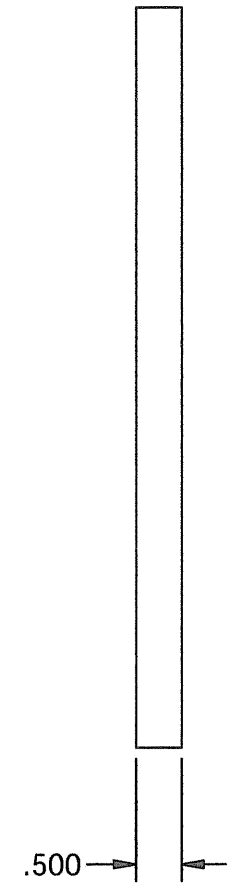
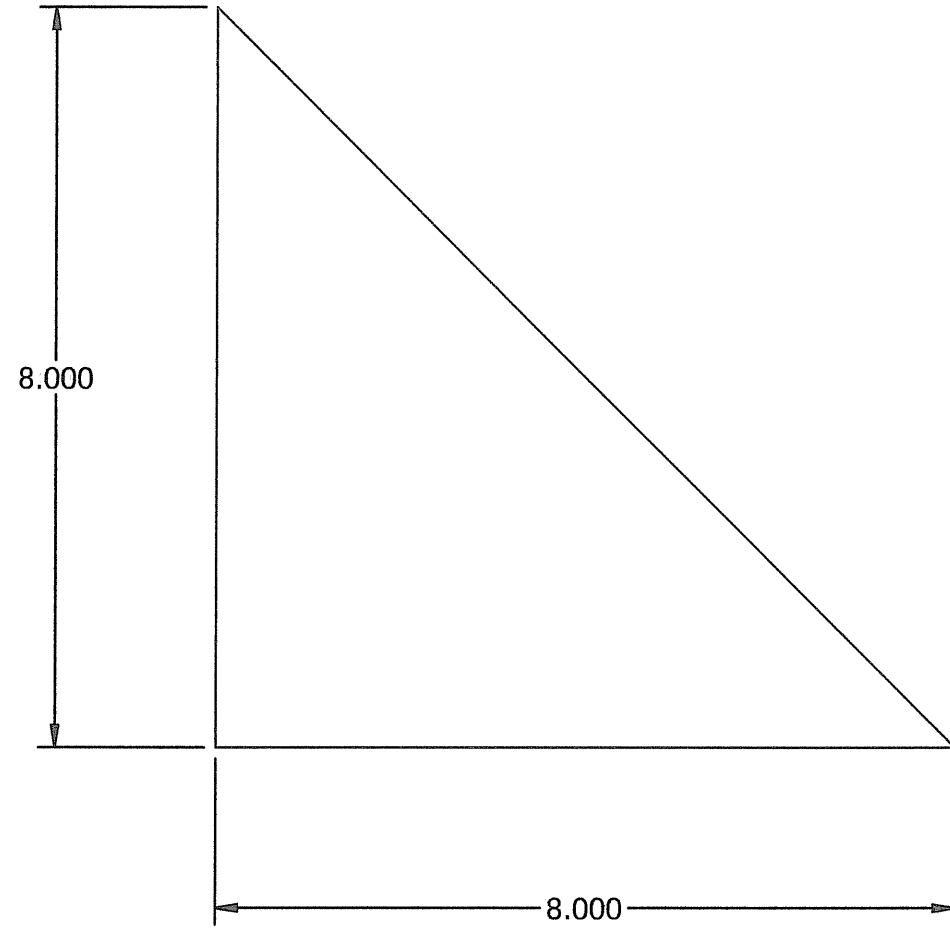
TOLERANCES Except where noted		DRAWN BY	DATE
3-FIG DEC	±.030	raghup	6/9/2008
2-FIG DEC	±.06	CHECKED BY	DATE
ANGULAR	±1/2°	ENG	1/22/2008
MAX EDGE RAD	.13	SCALE	WEIGHT
WELD SIZE	1/8	1/8	
MACHINED SURFACES	150	ER:	SIZE
NOT TO EXCEED	✓		B



TITLE		SPOKE_CENTER	
DRAWING NO:		GR140280008	
REV			

NOTES:

1. REMOVE ALL BURRS AND SHARP EDGES: ROUND ALL CORNERS.
2. REMOVE ALL WELD SPATTER, SLAG AND DISCOLORATION.
3. MATERIAL : A36



J. Kim / B. Kim
3/12/09

REV	DESCRIPTION	BY	DATE	ECO	CHK
REVISION SCHEDULE					

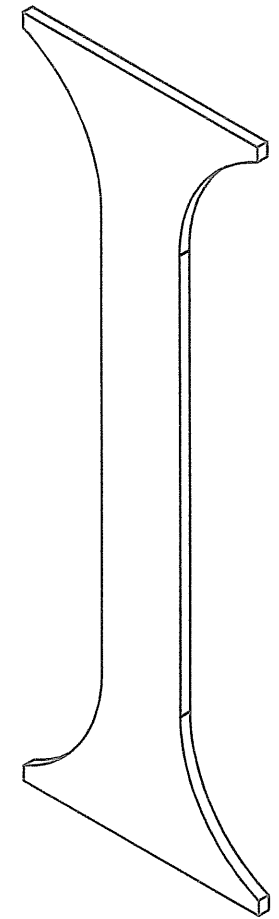
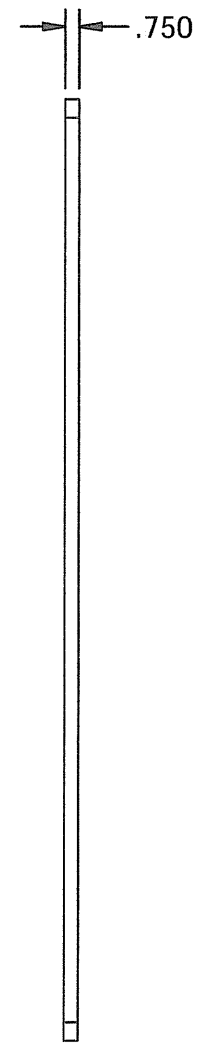
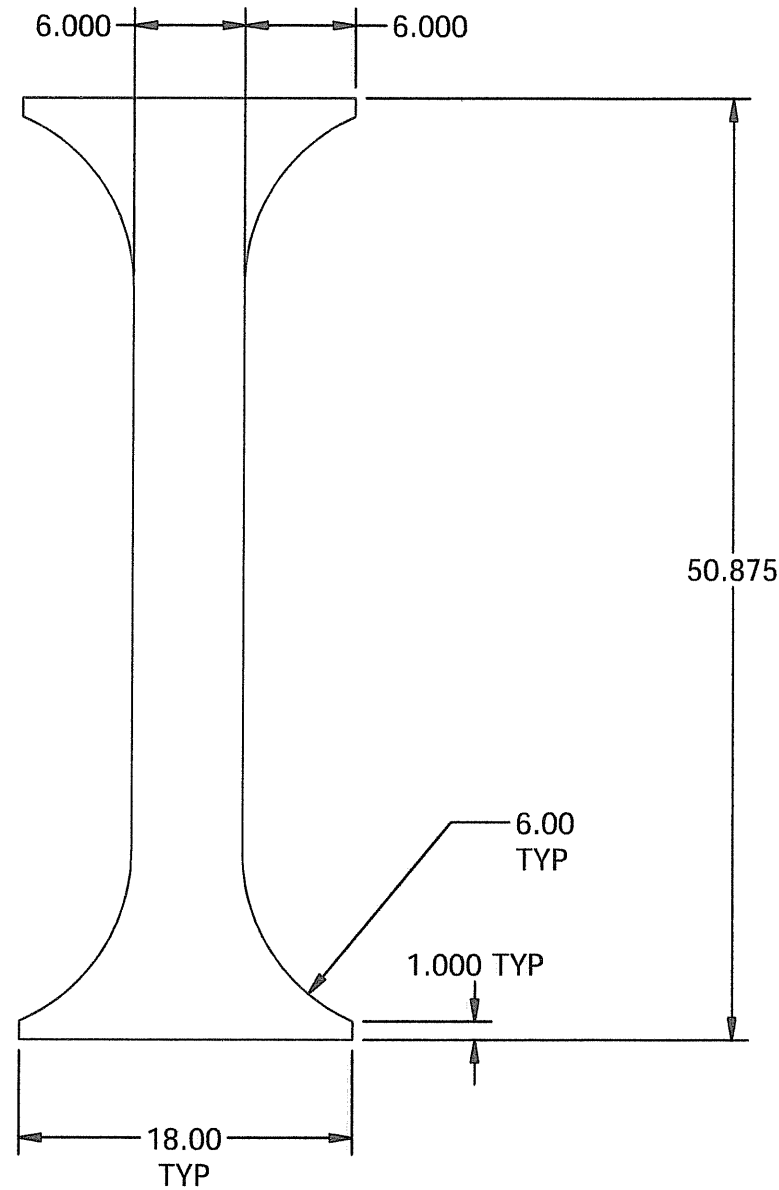
TOLERANCES		DRAWN BY	DATE
Except where noted		riyazs	5/22/2008
3-FIG DEC	±.030	CHECKED BY	DATE
2-FIG DEC	±.06	ENG	1/22/2008
ANGULAR	±1/2°	SCALE	WEIGHT
MAX EDGE RAD	.13	1:2	
WELD SIZE	1/8	ER:	SIZE
MACHINED SURFACES	150		B
NOT TO EXCEED			



TITLE		TRI_BRACKETS	
DRAWING NO:		GR140280009	
REV			

NOTES:

1. REMOVE ALL BURRS AND SHARP EDGES: ROUND ALL CORNERS.
2. REMOVE ALL WELD SPATTER, SLAG AND DISCOLORATION.
3. MATERIAL : A36



J. Conroy
3/12/10

REV	DESCRIPTION	BY	DATE	ECO	CHK
REVISION SCHEDULE					

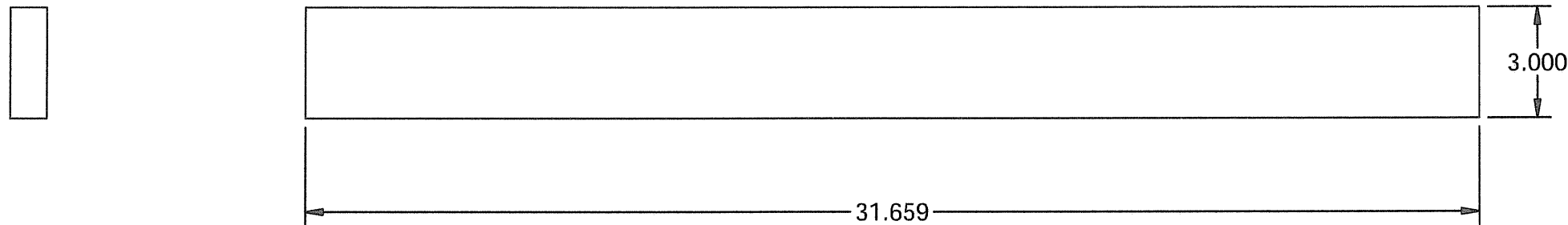
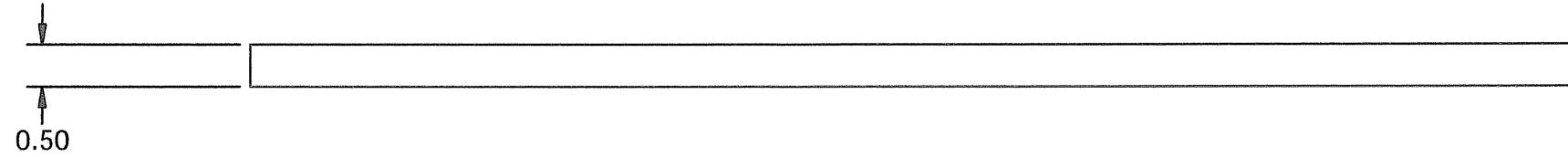
TOLERANCES Except where noted		DRAWN BY raghup	DATE 6/9/2008
3-FIG DEC	±.030	CHECKED BY ENG	DATE 1/22/2008
2-FIG DEC	±.06	SCALE 1/10	WEIGHT
ANGULAR	±1/2°	ER:	SIZE B
MAX EDGE RAD	.13		
WELD SIZE	1/8		
MACHINED SURFACES NOT TO EXCEED	150 ✓		



TITLE INSIDE_SPOKE_CENTER		REV
DRAWING NO: GR140280010		REV
SHEET 1 OF 1		

NOTES:

1. REMOVE ALL BURRS AND SHARP EDGES: ROUND ALL CORNERS.
2. REMOVE ALL WELD SPATTER, SLAG AND DISCOLORATION.
3. MATERIAL : A36



J. L. ...
3/12/09

REV	DESCRIPTION	BY	DATE	ECO	CHK
REVISION SCHEDULE					

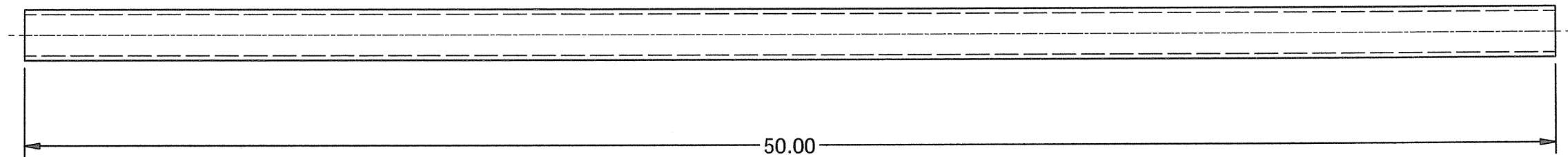
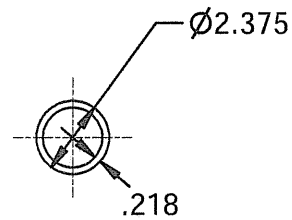
TOLERANCES Except where noted		DRAWN BY raghup	DATE 6/9/2008
3-FIG DEC	±.030	CHECKED BY ENG	DATE 1/22/2008
2-FIG DEC	±.06	SCALE 1/4	WEIGHT
ANGULAR	±1/2°	ER:	SIZE B
MAX EDGE RAD	.13		
WELD SIZE	1/8		
MACHINED SURFACES NOT TO EXCEED	150 ✓		



TITLE GUSSET		REV
DRAWING NO: GR140280011		

NOTES:

1. REMOVE ALL BURRS AND SHARP EDGES: ROUND ALL CORNERS.
2. REMOVE ALL WELD SPATTER, SLAG AND DISCOLORATION.
3. MATERIAL : A36



Tube has to be cut on both ends to fit along the angles between both I-beams in a diagonal manner.

All welds will be per latest American Welding Society standards

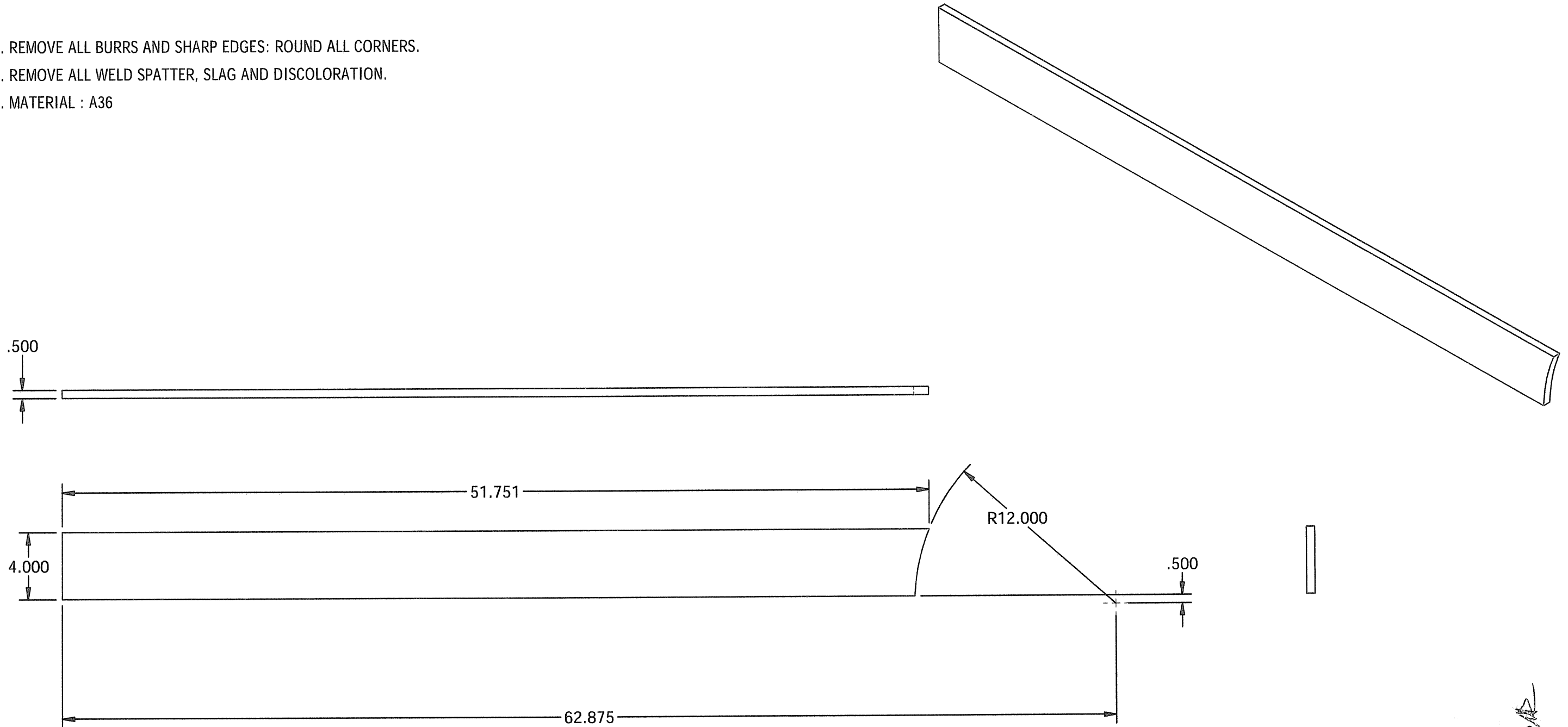
All fillet welds per drawing

T. Ambekar
3/12/09

TOLERANCES Except where noted 3-FIG DEC ±.030 2-FIG DEC ±.06 ANGULAR ±1/2° MAX EDGE RAD .13 WELD SIZE 1/8 MACHINED SURFACES 150 ✓ NOT TO EXCEED						DRAWN BY RAGHU	DATE 5/22/2008		TITLE EXTERNAL TUBE	
						CHECKED BY ENG	DATE 1/22/2008		DRAWING NO: GR140280012	
REVISION SCHEDULE		SCALE 1:6	WEIGHT	SHEET 1 OF 1						
ER: B	SIZE B									
REV	DESCRIPTION	BY	DATE	ECO	CHK					

NOTES:

1. REMOVE ALL BURRS AND SHARP EDGES: ROUND ALL CORNERS.
2. REMOVE ALL WELD SPATTER, SLAG AND DISCOLORATION.
3. MATERIAL : A36

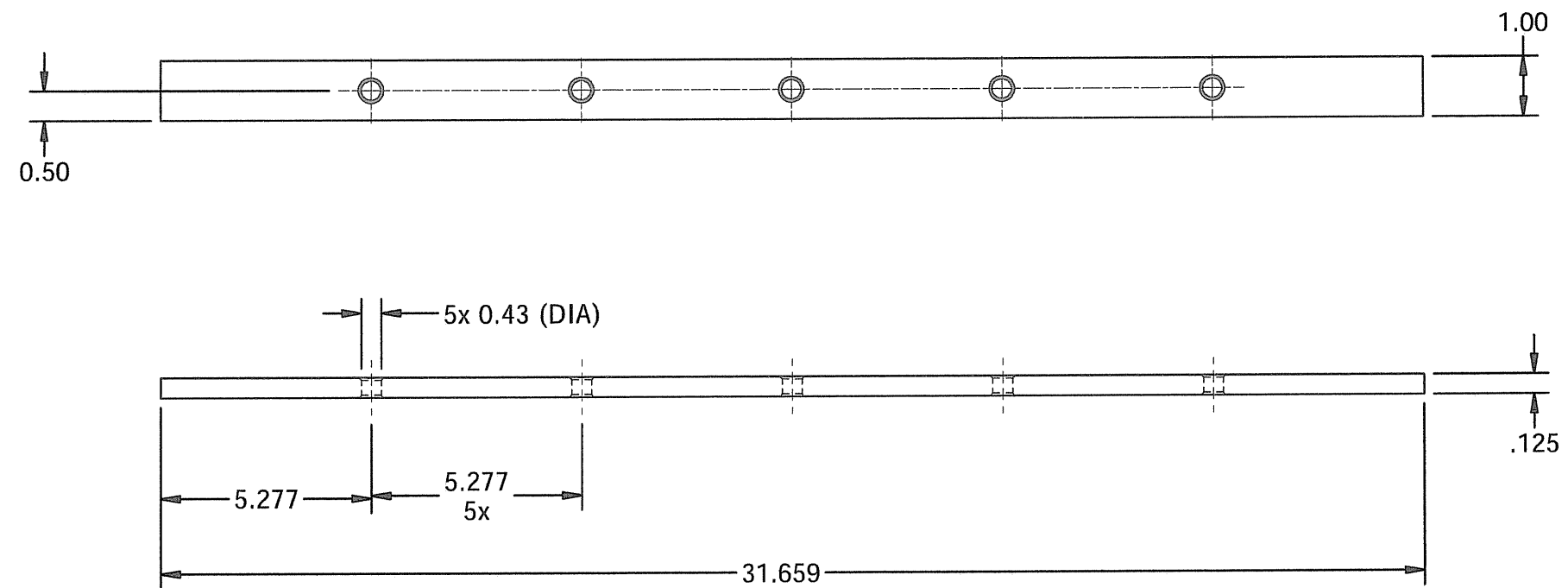


J. L. B...
6/21/09
3/12/09

TOLERANCES Except where noted						DRAWN BY RAGHU	DATE 5/21/2008		TITLE INSIDE SPOKE CENTER STIFFNER	
3-FIG DEC ± .030						CHECKED BY ENG	DATE 1/22/2008		DRAWING NO: GR140280013	
2-FIG DEC ± .06						SCALE 1:6	WEIGHT B			
ANGULAR ± 1/2°						REVISION SCHEDULE			SHEET 1 OF 1	
MAX EDGE RAD .13										
WELD SIZE 1/8										
MACHINED SURFACES NOT TO EXCEED 150										

NOTES:

1. REMOVE ALL BURRS AND SHARP EDGES: ROUND ALL CORNERS.
2. REMOVE ALL WELD SPATTER, SLAG AND DISCOLORATION.
3. MATERIAL : 304SS

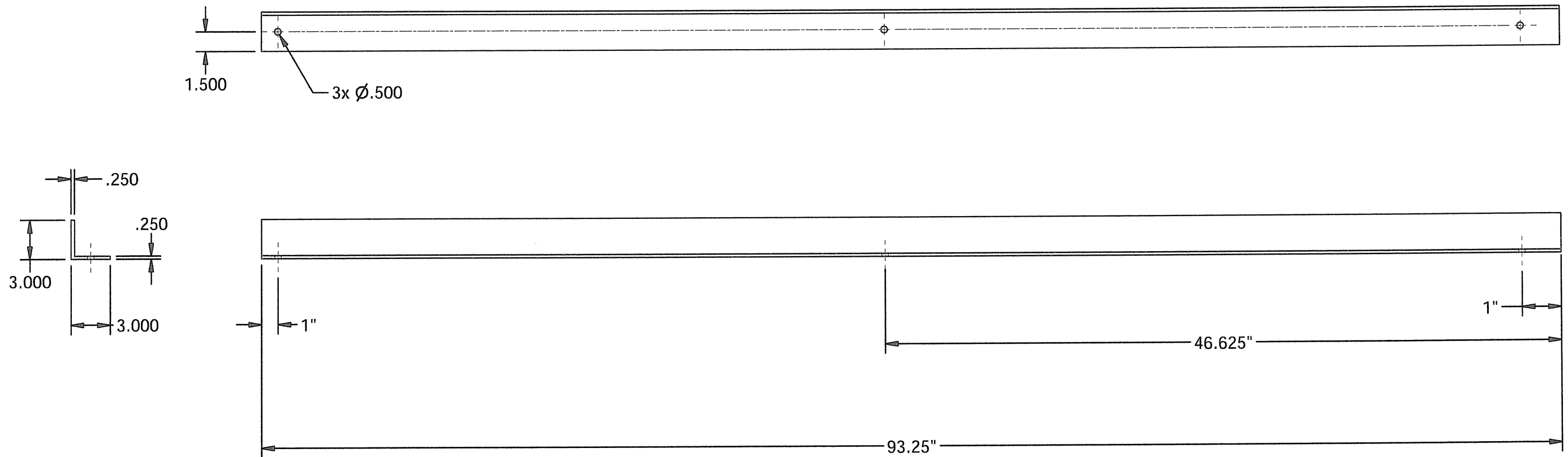


J. C. B...
3/12/09

<table border="1"> <thead> <tr> <th>REV</th> <th>DESCRIPTION</th> <th>BY</th> <th>DATE</th> <th>ECO</th> <th>CHK</th> </tr> </thead> <tbody> <tr> <td colspan="6" style="text-align: center;">REVISION SCHEDULE</td> </tr> </tbody> </table>						REV	DESCRIPTION	BY	DATE	ECO	CHK	REVISION SCHEDULE						TOLERANCES Except where noted 3-FIG DEC ±.030 2-FIG DEC ±.06 ANGULAR ±1/2° MAX EDGE RAD .13 WELD SIZE 1/8 MACHINED SURFACES 150 NOT TO EXCEED ✓		DRAWN BY RAGHU	DATE 5/22/2008		TITLE MESHFASTENER1	
						REV	DESCRIPTION	BY	DATE	ECO	CHK													
REVISION SCHEDULE																								
		CHECKED BY ENG	DATE 1/22/2008	SCALE 1:4	WEIGHT B	DRAWING NO: GR140280015	REV																	

NOTES:

1. REMOVE ALL BURRS AND SHARP EDGES: ROUND ALL CORNERS.
2. REMOVE ALL WELD SPATTER, SLAG AND DISCOLORATION.
3. MATERIAL : 304SS (EQUAL ANGLE)



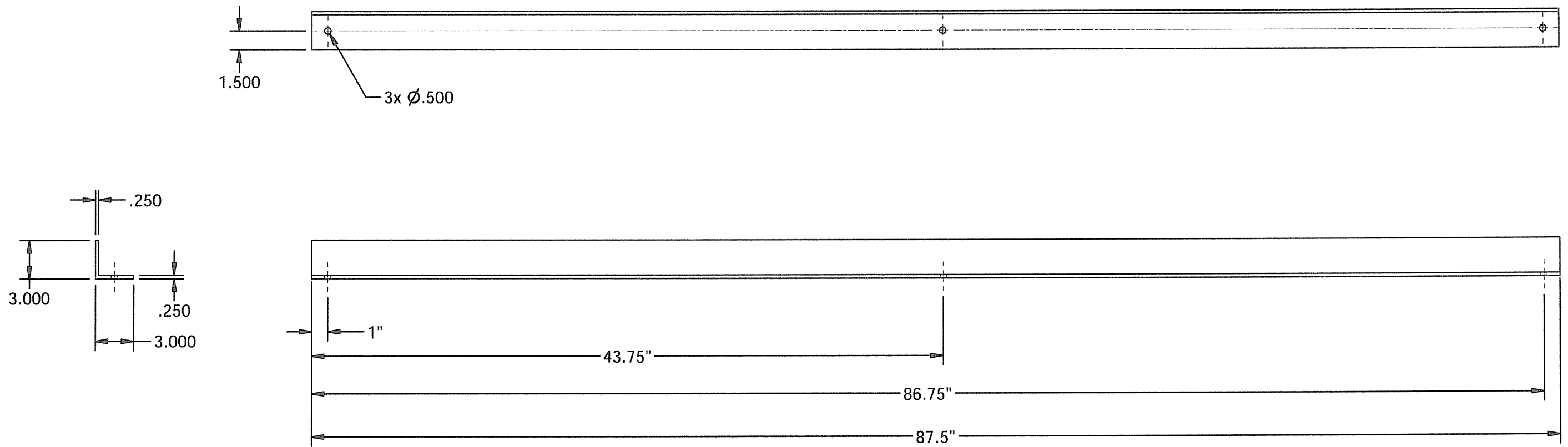
Handwritten signature and date:
 5/22/08
 3/12/05

TOLERANCES Except where noted						DRAWN BY	DATE		TITLE	
3-FIG DEC	±.030	RAGHU	5/22/2008	MESHFASTENER3						
2-FIG DEC	±.06	CHECKED BY	DATE	DRAWING NO:						
ANGULAR	±1/2°	ENG	1/22/2008	GR140280016						
MAX EDGE RAD	.13	SCALE	WEIGHT	REV						
WELD SIZE	1/8	1:8		SHEET 1 OF 1						
MACHINED SURFACES	150	ER:	SIZE							
NOT TO EXCEED	✓		B							

REV	DESCRIPTION	BY	DATE	ECO	CHK
REVISION SCHEDULE					

NOTES:

1. REMOVE ALL BURRS AND SHARP EDGES: ROUND ALL CORNERS.
2. REMOVE ALL WELD SPATTER, SLAG AND DISCOLORATION.
3. MATERIAL : 304 (EQUAL ANGLE)

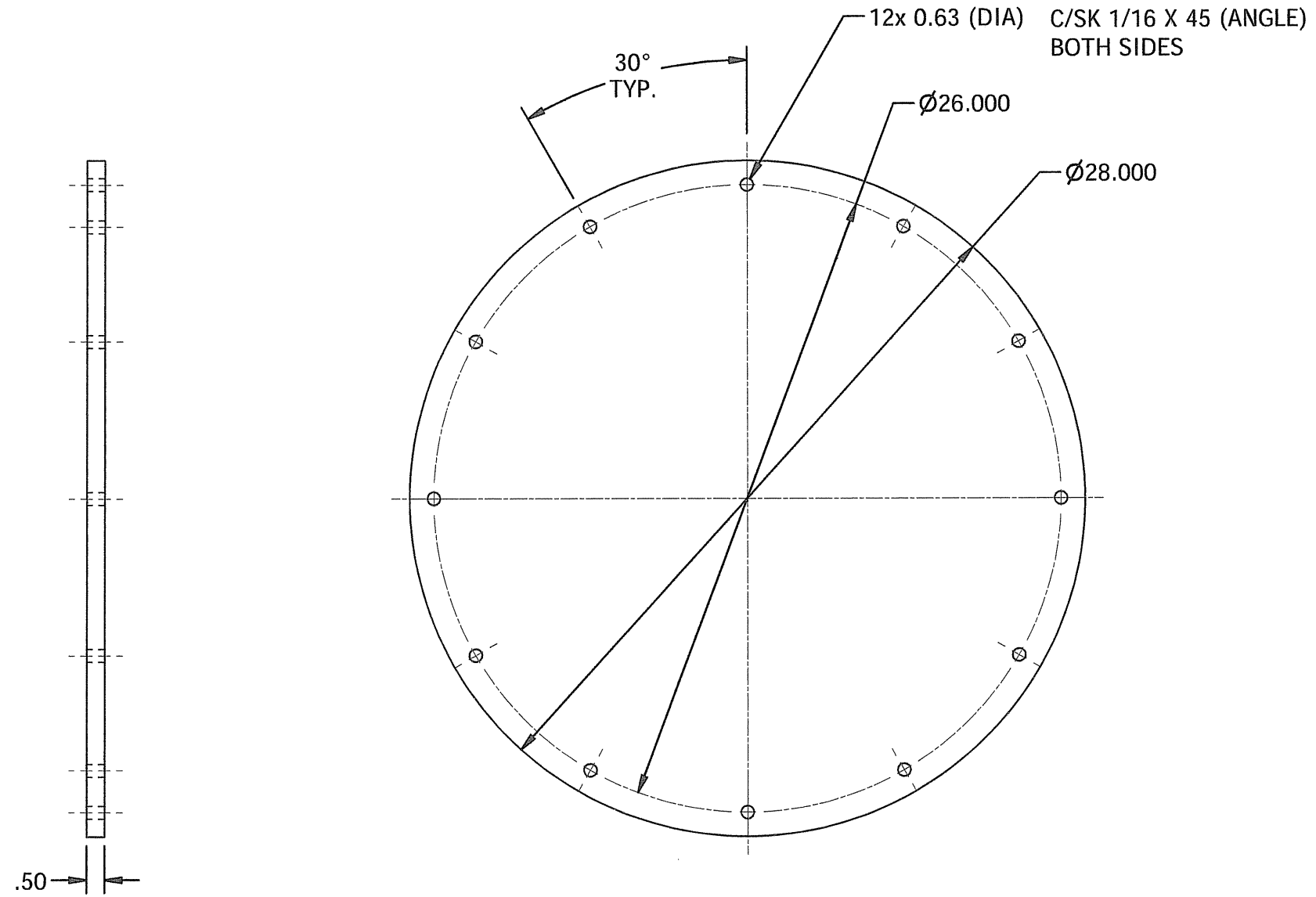


Handwritten signature and date:
 T. B. B. B. B.
 3/12/09

TOLERANCES Except where noted						DRAWN BY	DATE		TITLE	
3-FIG DEC	±.030	RAGHU	5/22/2008	MESHFASTENER2CENTER						
2-FIG DEC	±.06	CHECKED BY	DATE	DRAWING NO:						
ANGULAR	±1/2°	ENG	1/22/2008			GR140280017				
MAX EDGE RAD	.13	SCALE	WEIGHT	REV						
WELD SIZE	1/8	1:8				SHEET 1 OF 1				
MACHINED SURFACES	150	ER:	SIZE	REVISION SCHEDULE						
NOT TO EXCEED	✓		B							

NOTES:

1. REMOVE ALL BURRS AND SHARP EDGES: ROUND ALL CORNERS.
2. REMOVE ALL WELD SPATTER, SLAG AND DISCOLORATION.
3. MATERIAL : A36

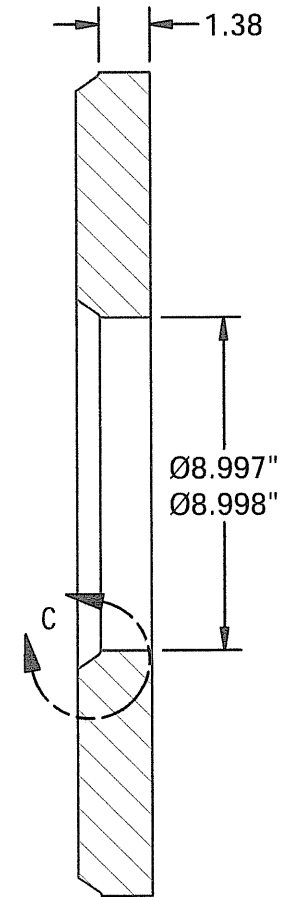
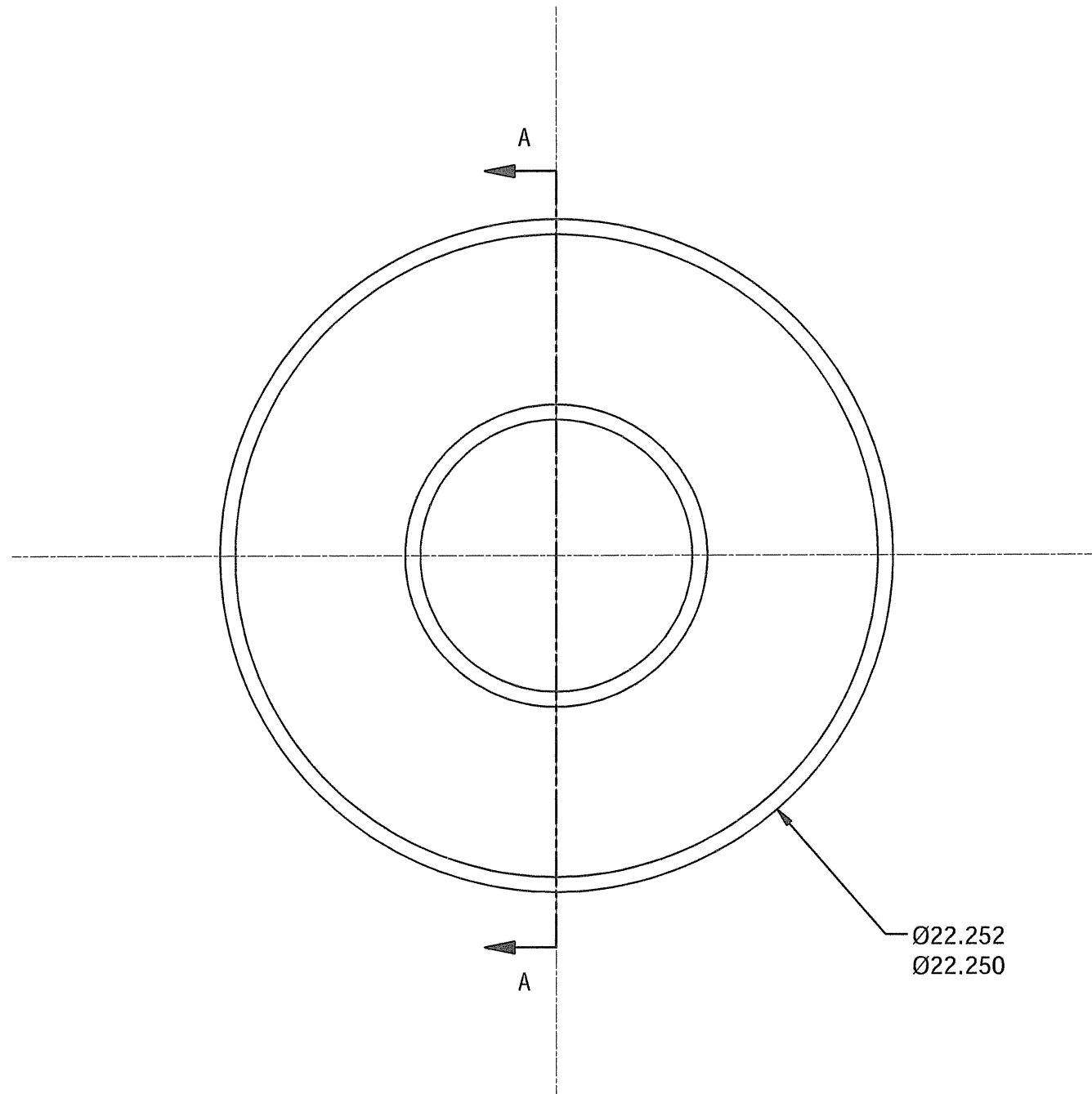


J. B. B. B. B. B.
3/12/09

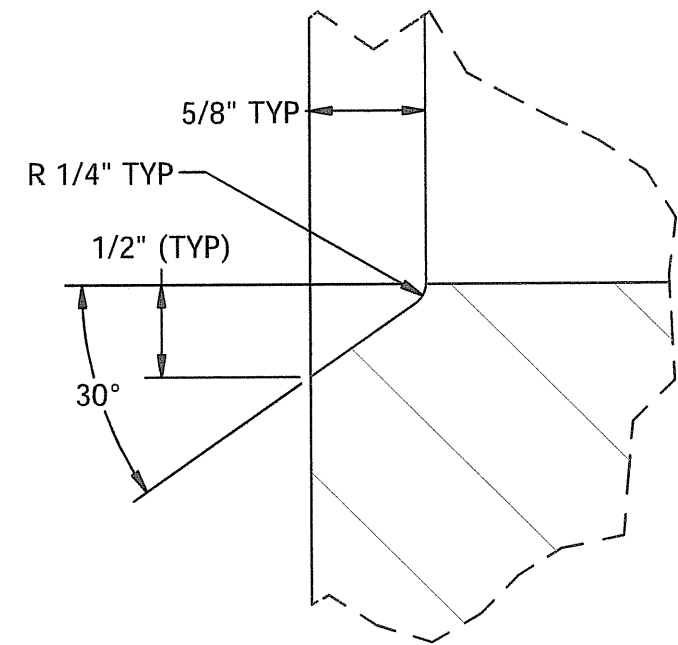
<table border="1"> <thead> <tr> <th>REV</th> <th>DESCRIPTION</th> <th>BY</th> <th>DATE</th> <th>ECO</th> <th>CHK</th> </tr> </thead> <tbody> <tr> <td colspan="6" style="text-align: center;">REVISION SCHEDULE</td> </tr> </tbody> </table>						REV	DESCRIPTION	BY	DATE	ECO	CHK	REVISION SCHEDULE						TOLERANCES Except where noted 3-FIG DEC ±.030 2-FIG DEC ±.06 ANGULAR ±1/2° MAX EDGE RAD .13 WELD SIZE 1/8 MACHINED SURFACES 150 ✓ NOT TO EXCEED		DRAWN BY RAGHU	DATE 5/23/2008		TITLE COVER	
						REV	DESCRIPTION	BY	DATE	ECO	CHK													
REVISION SCHEDULE																								
		CHECKED BY ENG	DATE 1/22/2008	SCALE 1:6	WEIGHT	DRAWING NO: GR140280019	REV																	

NOTES:

1. REMOVE ALL BURRS AND SHARP EDGES: ROUND ALL CORNERS.
2. MATERIAL A36
3. DETAIL C IS THE SAME AS THE OUTER PROFILE OF THE PART.



SECTION A-A
SCALE 1/5



DETAIL C
SCALE 1 : 1

J. Lee Blythe
3/12/09

REV	DESCRIPTION	BY	DATE	ECO	CHK
REVISION SCHEDULE					

TOLERANCES		DRAWN BY	DATE
Except where noted		adolfor	11/5/2008
3-FIG DEC	±.030	CHECKED BY	DATE
2-FIG DEC	±.06	ENG	1/22/2008
ANGULAR	±1/2°	SCALE	WEIGHT
MAX EDGE RAD	.13	4	5
WELD SIZE	1/8	ER:	SIZE
MACHINED SURFACES	150	6	B
NOT TO EXCEED			



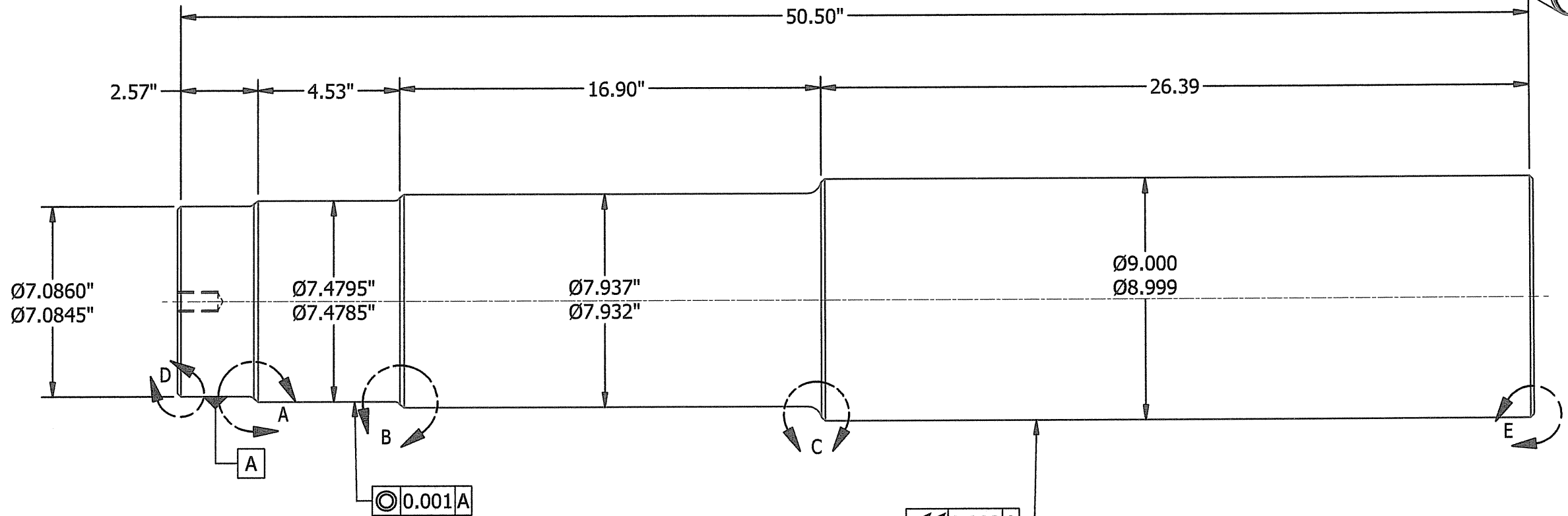
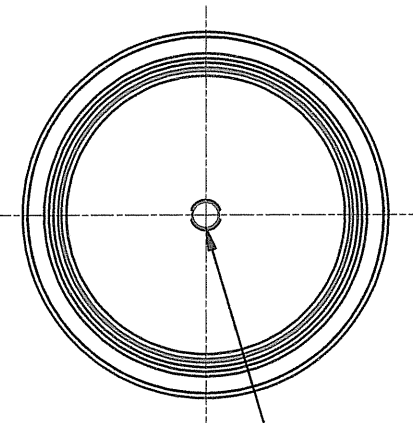
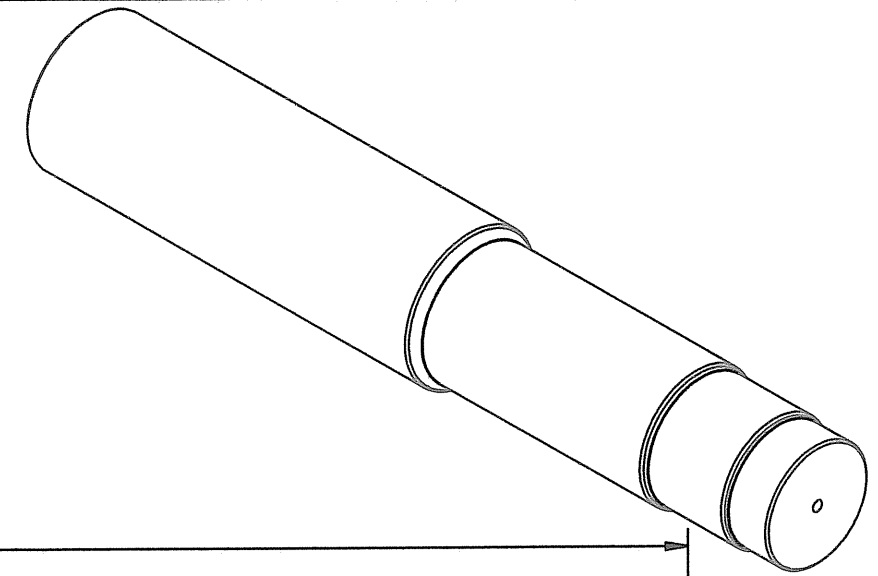
TITLE		Shaft-Spacer	
DRAWING NO:		GR140280020	
SHEET 1 OF 1		REV	

NOTES:

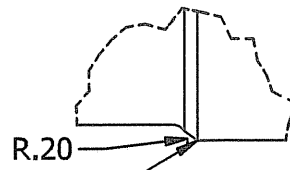
1. REMOVE ALL BURRS AND SHARP EDGES: ROUND ALL CORNERS.
2. REMOVE ALL WELD SPATTER, SLAG AND DISCOLORATION.
3. MATERIAL CR 1018



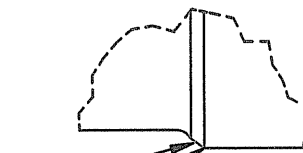
DETAIL E
SCALE 0.44 : 1



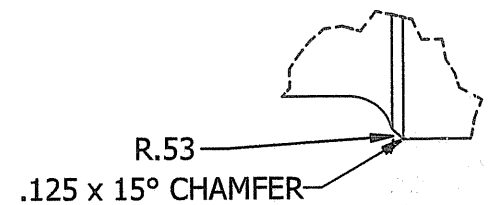
DETAIL D
SCALE 0.44 : 1



DETAIL A
SCALE 0.44 : 1



DETAIL B
SCALE 0.44 : 1



DETAIL C
SCALE 0.44 : 1

Handwritten signature and date:
3/12/09

REV	DESCRIPTION	BY	DATE	ECO	CHK
REVISION SCHEDULE					

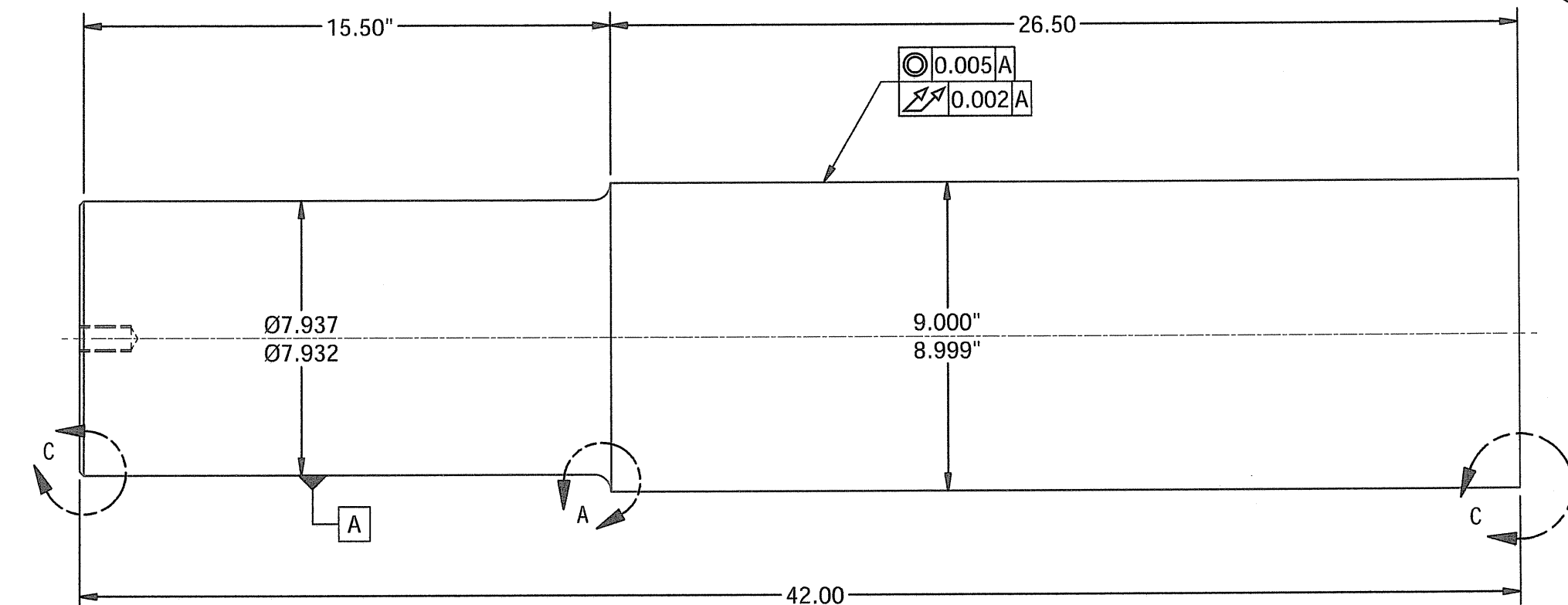
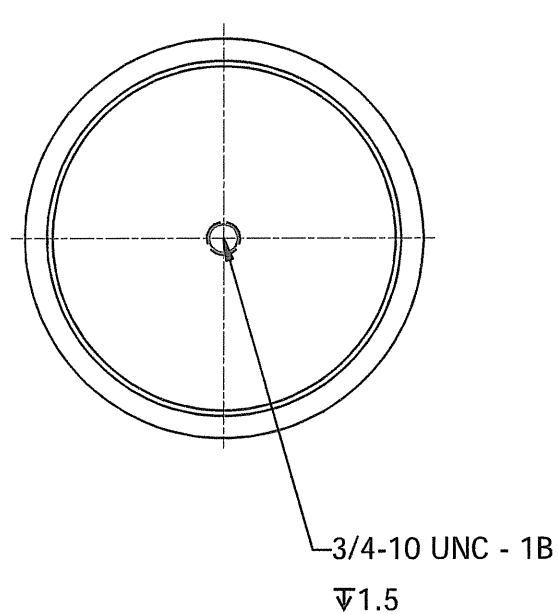
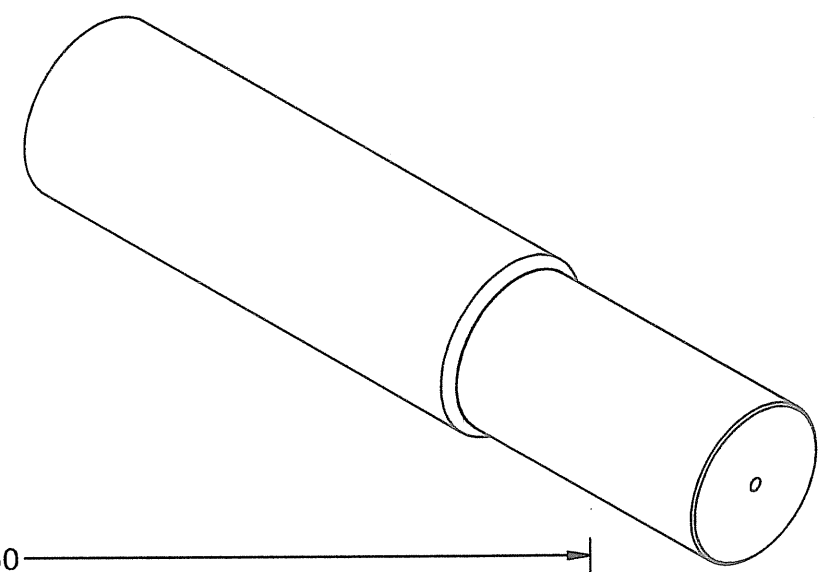
TOLERANCES Except where noted		DRAWN BY	DATE
3-FIG DEC	±.030	A.R	11/5/2008
2-FIG DEC	±.06	CHECKED BY	DATE
ANGULAR	±1/2°	ENG	1/22/2008
MAX EDGE RAD	.13	SCALE	WEIGHT
WELD SIZE	1/8	4	5
MACHINED SURFACES	150	ER:	SIZE
NOT TO EXCEED	✓	6	B



TITLE		Driven-Stubshaft	
DRAWING NO:		GR140280021	
REV		SHEET 1 OF 1	

NOTES:

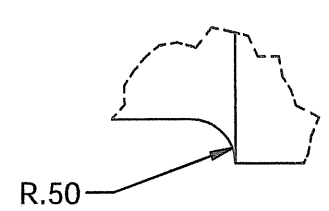
- 1. REMOVE ALL BURRS AND SHARP EDGES: ROUND ALL CORNERS.
- 3. MATERIAL: CR1018



⊙ 0.005 A
↗ 0.002 A

.125 x 45° CHAMFER
BOTH ENDS

DETAIL C
SCALE 0.48 : 1



DETAIL A
SCALE 0.48 : 1

TOLERANCES		DRAWN BY	DATE
Except where noted		adolfor	11/5/2008
3-FIG DEC	±.030	CHECKED BY	DATE
2-FIG DEC	±.06	ENG	1/22/2008
ANGULAR	±1/2°	SCALE	WEIGHT
MAX EDGE RAD	.13	4	5
WELD SIZE	1/8	ER:	SIZE
MACHINED SURFACES	150	6	B
NOT TO EXCEED	✓		

REV	DESCRIPTION	BY	DATE	ECO	CHK
REVISION SCHEDULE					

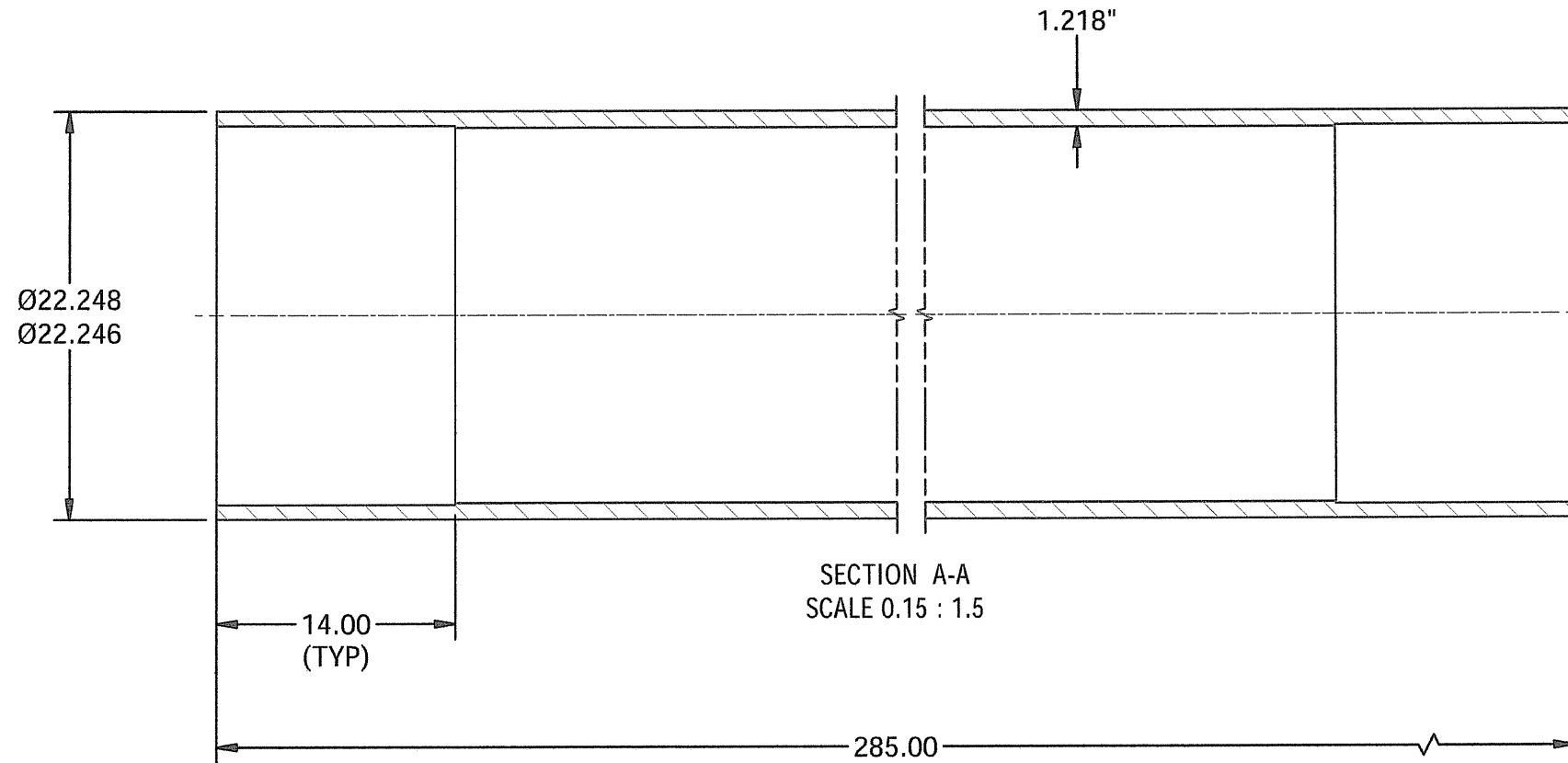
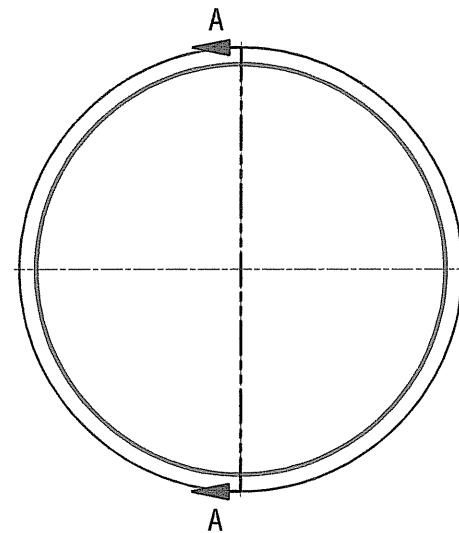
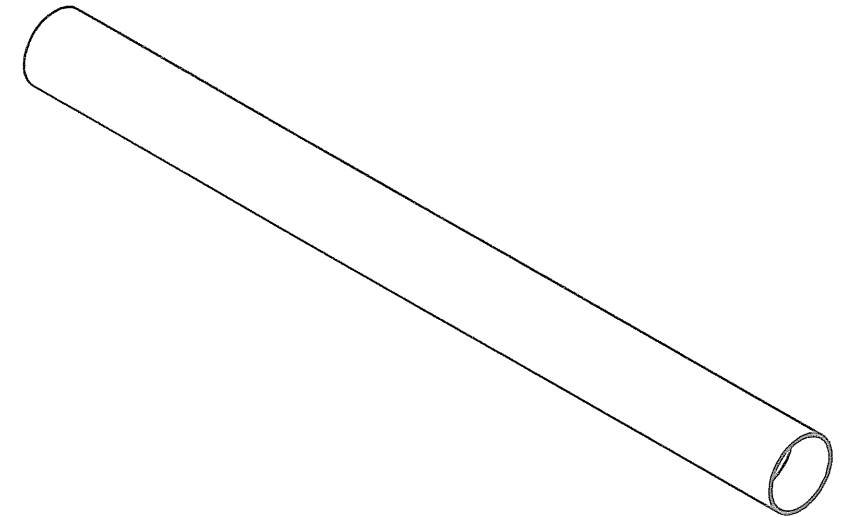


TITLE		Idle-Stubshaft	
DRAWING NO:		GR140280022	
SHEET 1 OF 1		REV	

Handwritten signature and date: 3/12/09

NOTES:

1. REMOVE ALL BURRS AND SHARP EDGES: ROUND ALL CORNERS.
2. REMOVE ALL WELD SPATTER, SLAG AND DISCOLORATION.
3. MATERIAL A53B SCH 80



J. Cas...
3/12/09

REV	DESCRIPTION	BY	DATE	ECO	CHK
REVISION SCHEDULE					

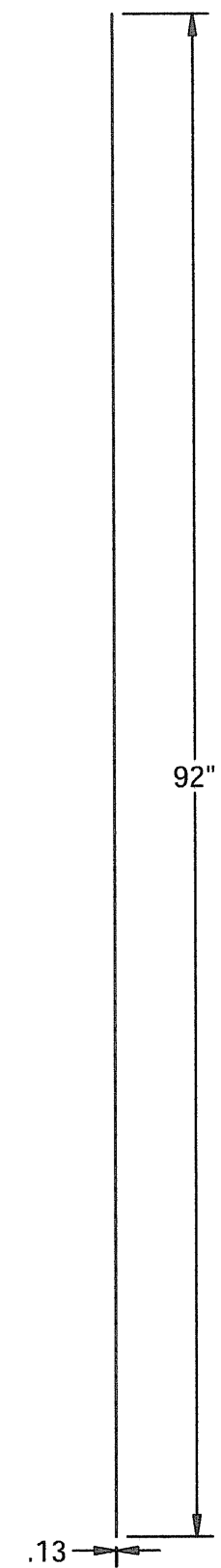
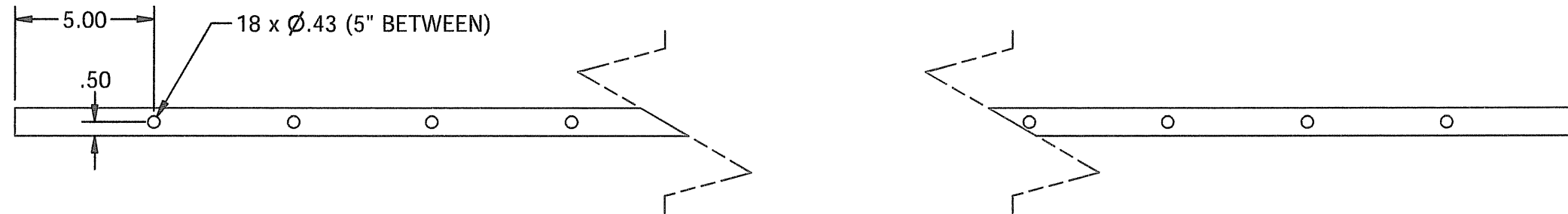
TOLERANCES		DRAWN BY	DATE
Except where noted		adolfor	11/5/2008
3-FIG DEC	±.030	CHECKED BY	DATE
2-FIG DEC	±.06	ENG	1/22/2008
ANGULAR	±1/2°	SCALE	WEIGHT
MAX EDGE RAD	.13	4	5
WELD SIZE	1/8	ER:	SIZE
MACHINED SURFACES NOT TO EXCEED	150	6	B



TITLE		Shaft (SCH60 24" DIA)
DRAWING NO:		GR140280023
REV		

NOTES:

1. REMOVE ALL BURRS AND SHARP EDGES: ROUND ALL CORNERS.
2. REMOVE ALL WELD SPATTER, SLAG AND DISCOLORATION.
3. MATERIAL 304SS



Handwritten signature and date:
 J. B. B. / JRB
 3/12/07

REV	DESCRIPTION	BY	DATE	ECO	CHK
REVISION SCHEDULE					

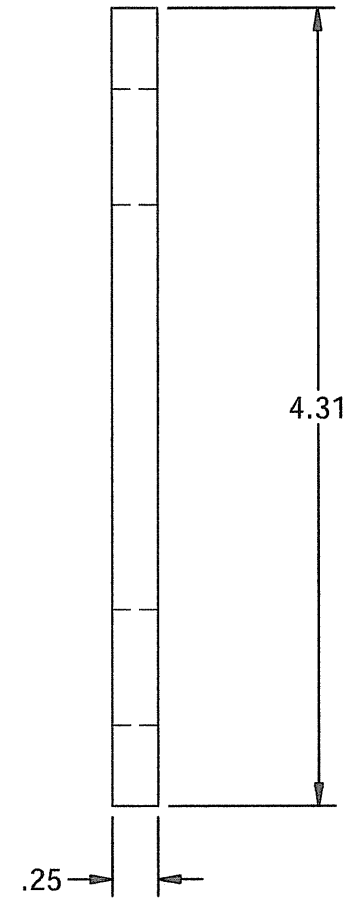
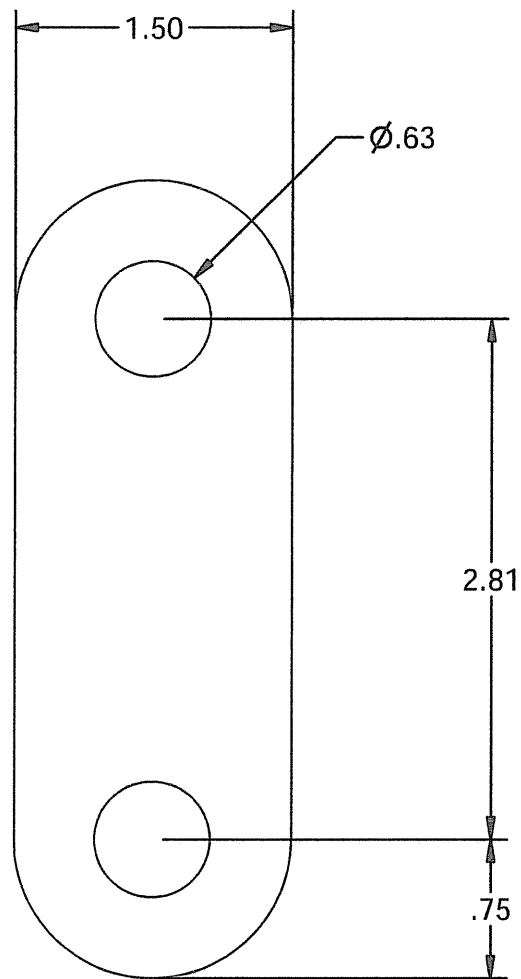
TOLERANCES		DRAWN BY	DATE
Except where noted		adolfor	11/5/2008
3-FIG DEC	±.030	CHECKED BY	DATE
2-FIG DEC	±.06	ENG	1/22/2008
ANGULAR	±1/2°	SCALE	WEIGHT
MAX EDGE RAD	.13	4	5
WELD SIZE	1/8	ER:	SIZE
MACHINED SURFACES	150	6	B
NOT TO EXCEED			



TITLE		1 X 1/8 X 92 FLAT BAR
DRAWING NO:	GR140280028	REV

NOTES:

1. REMOVE ALL BURRS AND SHARP EDGES: ROUND ALL CORNERS.
2. REMOVE ALL WELD SPATTER, SLAG AND DISCOLORATION.
3. MATERIAL 304SS



T. Campbell SA
3/12/09

REV	DESCRIPTION	BY	DATE	ECO	CHK
REVISION SCHEDULE					

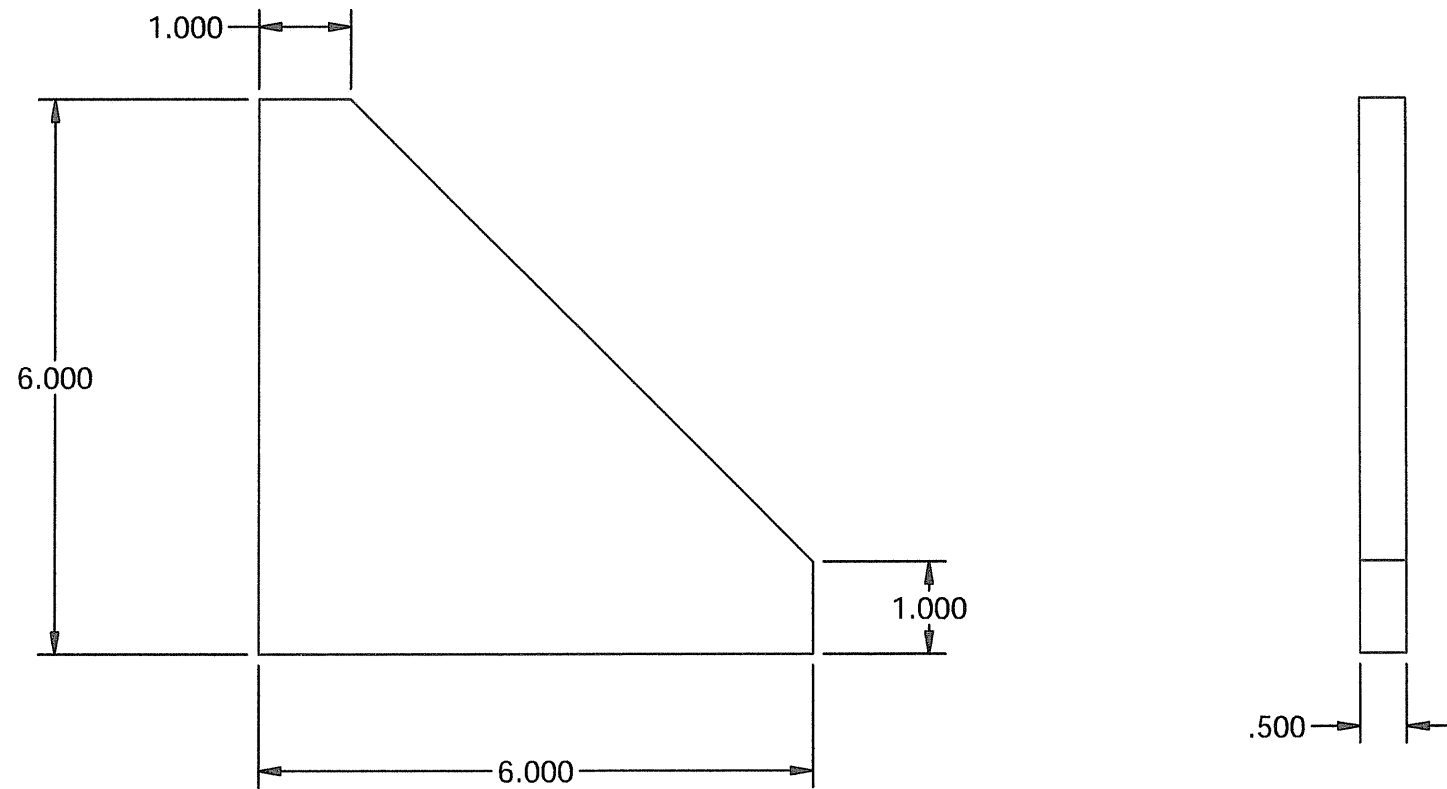
TOLERANCES Except where noted		DRAWN BY adolfor	DATE 11/10/2008
3-FIG DEC	±.030	CHECKED BY ENG	DATE 1/22/2008
2-FIG DEC	±.06	SCALE 4	WEIGHT 5
ANGULAR	±1/2°	ER: 6	SIZE B
MAX EDGE RAD	.13		
WELD SIZE	1/8		
MACHINED SURFACES NOT TO EXCEED	150		



TITLE MESH CLOSING BRACKET		REV
DRAWING NO: GR140280029		
SHEET 1 OF 1		

NOTES:

1. REMOVE ALL BURRS AND SHARP EDGES: ROUND ALL CORNERS.
2. REMOVE ALL WELD SPATTER, SLAG AND DISCOLORATION.
3. MATERIAL : A36



J. L. B. H. S. A.
3/12/09

REV	DESCRIPTION	BY	DATE	ECO	CHK
REVISION SCHEDULE					

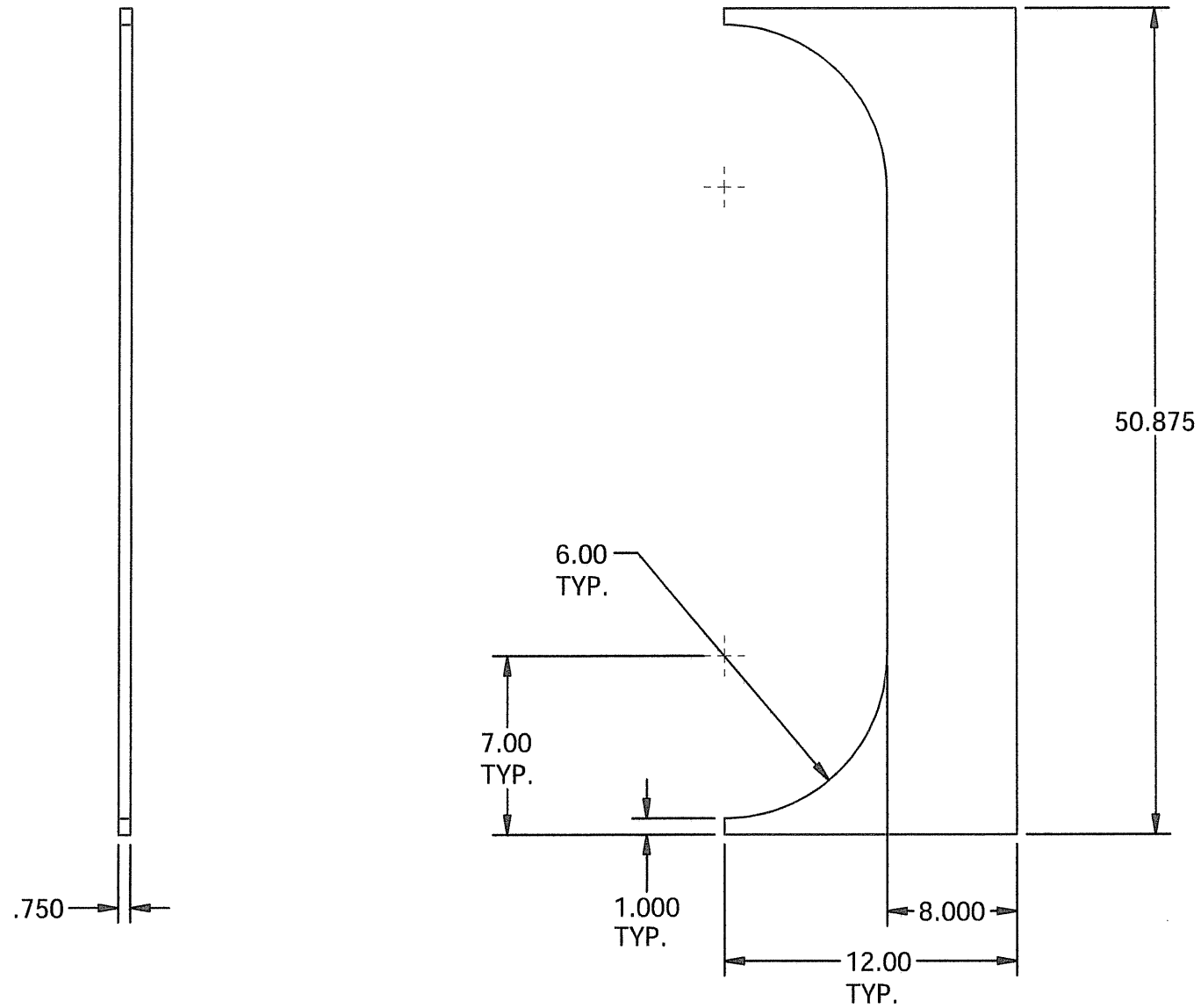
TOLERANCES		DRAWN BY	DATE
Except where noted		raghup	6/9/2008
3-FIG DEC	±.030	CHECKED BY	DATE
2-FIG DEC	±.06	ENG	1/22/2008
ANGULAR	±1/2°	SCALE	WEIGHT
MAX EDGE RAD	.13	1/2	
WELD SIZE	1/8	ER:	SIZE
MACHINED SURFACES	150		B
NOT TO EXCEED	✓		



TITLE		REV
GUSSET STUBSHAFT		
DRAWING NO:	GR140280031	
		SHEET 1 OF 1

NOTES:

1. REMOVE ALL BURRS AND SHARP EDGES: ROUND ALL CORNERS.
2. REMOVE ALL WELD SPATTER, SLAG AND DISCOLORATION.
3. MATERIAL : A36



T. Ca. B. B. B.
3/12/09

TOLERANCES Except where noted 3-FIG DEC ±.030 2-FIG DEC ±.06 ANGULAR ±1/2° MAX EDGE RAD .13 WELD SIZE 1/8 MACHINED SURFACES 150 ✓ NOT TO EXCEED						DRAWN BY RAGHU	DATE 5/23/2008		TITLE SPOKE	
						CHECKED BY ENG	DATE 1/22/2008		DRAWING NO: GR140280032	
REVISION SCHEDULE		SCALE 1:10	WEIGHT	SHEET 1 OF 1						
REV	DESCRIPTION	BY	DATE	ECO	CHK	ER:	SIZE B			

