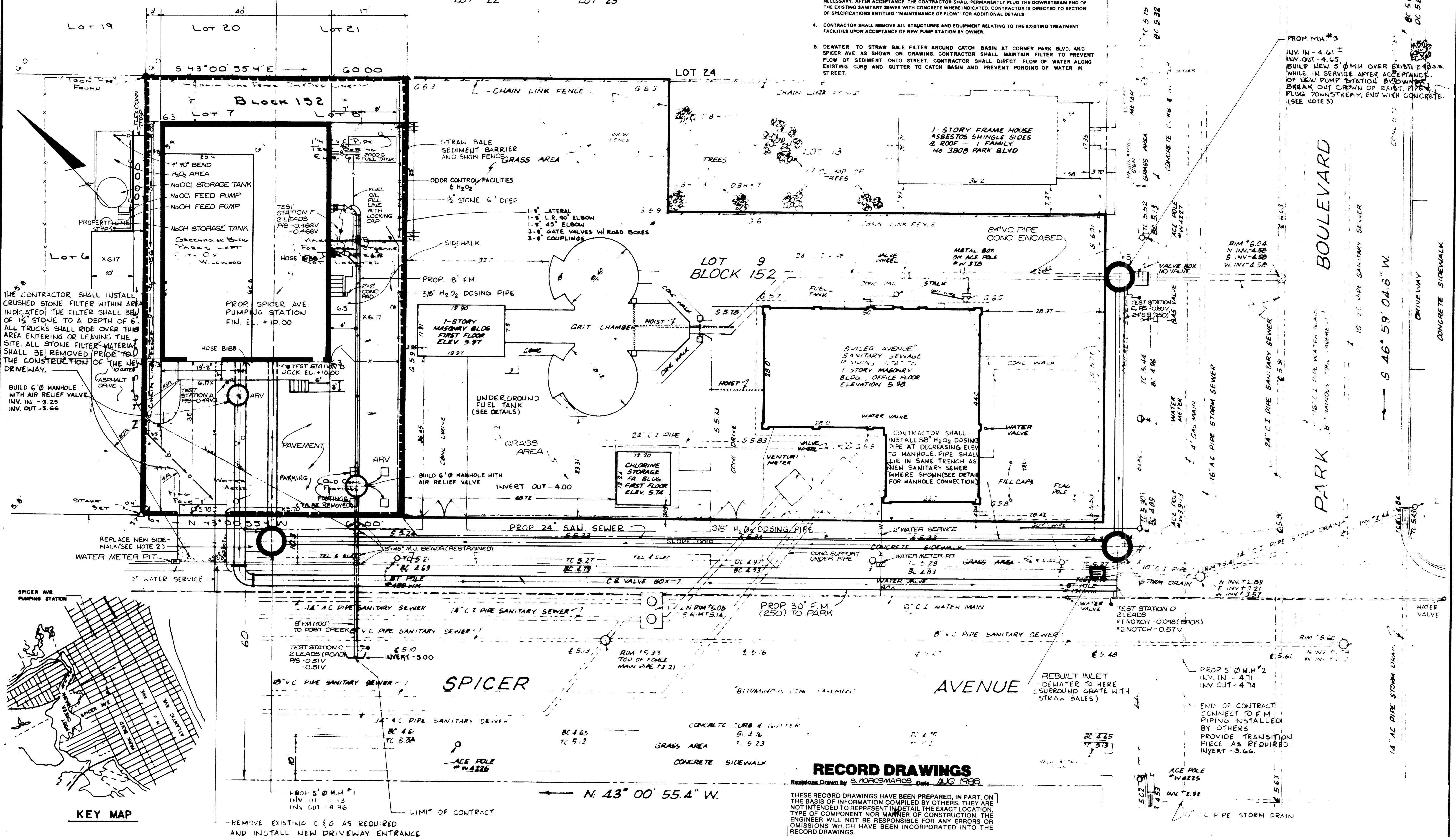


TOPOGRAPHIC SURVEY BY  
 VAN NOTE HARVEY ASSOCIATES  
 901, BAYSHORE ROAD  
 VILLAS, NEW JERSEY 08251  
 COMPLETED - 11-5-81 & 5-1-82

- NOTES:
- UTILITY INFORMATION IS BASED ON FIELD LOCATION OF VISIBLE PORTIONS AND INFORMATION PROVIDED BY RESPECTIVE UTILITIES. THE CONTRACTOR SHALL VERIFY PIPE SIZE, LOCATION, AND MATERIAL OF CONSTRUCTION IN THE FIELD.
  - CONTRACTOR SHALL REPLACE ANY SIDEWALKS, CURBING, PAVEMENT, AND ANY OTHER IMPROVEMENTS DAMAGED OR DESTROYED BY INSTALLATION OF PROPOSED WORK UNLESS OTHERWISE INDICATED.
  - CONTRACTOR SHALL INSTALL TEMPORARY PLUGS TO DIVERT FLOW FROM THE EXISTING PUMP STATION OR SANITARY SEWER, WHERE APPLICABLE, UNTIL THE PROPOSED PUMP STATION IS ACCEPTED BY OWNER. PROVISIONS SHALL BE MADE TO REDIRECT THE FLOW TO THE EXISTING STATION OR SANITARY SEWER IF NECESSARY. AFTER ACCEPTANCE, THE CONTRACTOR SHALL PERMANENTLY PLUG THE DOWNSTREAM END OF THE EXISTING SANITARY SEWER WITH CONCRETE WHERE INDICATED. CONTRACTOR IS DIRECTED TO SECTION OF SPECIFICATIONS ENTITLED "MAINTENANCE OF FLOW" FOR ADDITIONAL DETAILS.
  - CONTRACTOR SHALL REMOVE ALL STRUCTURES AND EQUIPMENT RELATING TO THE EXISTING TREATMENT FACILITIES UPON ACCEPTANCE OF NEW PUMP STATION BY OWNER.
  - DEWATER TO STRAW BALE FILTER AROUND CATCH BASIN AT CORNER PARK BLVD AND SPICER AVE, AS SHOWN ON DRAWING. CONTRACTOR SHALL MAINTAIN FILTER TO PREVENT FLOW OF SEDIMENT ONTO STREET. CONTRACTOR SHALL DIRECT FLOW OF WATER ALONG EXISTING CURB AND GUTTER TO CATCH BASIN AND PREVENT PONDING OF WATER IN STREET.

REVISIONS			
DATE	DW'N	CHK'D	APP'V
7-28-87	R.J.T.	G.D.D.	
			ODOR CONTROL PAD



**RECORD DRAWINGS**

Revisions Drawn by S. MOROSMAROS Date AUG 1988  
 THESE RECORD DRAWINGS HAVE BEEN PREPARED, IN PART, ON THE BASIS OF INFORMATION COMPILED BY OTHERS. THEY ARE NOT INTENDED TO REPRESENT IN DETAIL THE EXACT LOCATION, TYPE OF COMPONENT NOR MANNER OF CONSTRUCTION. THE ENGINEER WILL NOT BE RESPONSIBLE FOR ANY ERRORS OR OMISSIONS WHICH HAVE BEEN INCORPORATED INTO THE RECORD DRAWINGS.

**PQA ENGINEERING COMPANY**  
 CHARLOTTE, NORTH CAROLINA RIVERDALE, NEW JERSEY

**APPROVALS**

DESIGNED	G.D.D.	PROJ. MGR.	D.D.K.
DRAWN	N.P.	PROJ. ENGR.	R.D.D.
CHECKED	R.D.D.		

**Francis Pandullo**  
 FRANCIS PANDULLO  
 PROFESSIONAL ENGINEER  
 N.J. LIC. NO. 11026 DATE 7/16/82

CAPE MAY COUNTY MUNICIPAL UTILITIES AUTHORITY  
 CAPE MAY COUNTY NEW JERSEY  
 WILDWOOD / LOWER REGION  
 REGIONAL PUMPING STATIONS

**SPICER AVENUE PUMPING STATION  
 SITE AND SEDIMENT CONTROL PLAN**

PROJECT NO. 61832  
 SCALE: 1" = 10'-0"  
 DWG. M-8  
 SHEET 8 OF 110